

GENERAL PURPOSE ENGINE

**GX630
GX660
GX690**

PARTS CATALOGUE

1

FOREWORD INDEX

1

ENGINE GROUP

2

PART NUMBER INDEX

3

PART NAME INDEX

4

Instruction for use of parts catalogue

- **This parts catalogue was prepared based on the latest information available as of June 25, 2010.**
- See the parts catalogue news for any revision that is made after June 25, 2010.
- **Always specify the part number when ordering a part.**
- Check the model, type, serial numbers, color, maker, and the size as needed before ordering a part.
- Note that the illustrations (part drawings) can differ from the actual parts in shape. They are given just to help you to refer to the parts.
- **When modifications or additions to this parts catalogue are made, a revised edition will be issued at an appropriate time, with successively progressing revision numbers on the cover. We recommend obtaining such revisions in order to keep your parts catalogue up-to-date at all times. To check whether a parts catalogue revision has been issued, please contact your Honda distributor.**

Initial version issue date **June 25, 2010**
Honda Motor Co., Ltd.

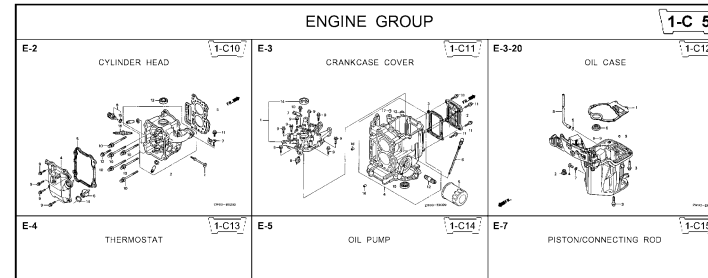
CONTENTS

	Page	Address No.	
● Instruction for use of parts catalogue	1	B 1	1
● How to refer to the part information	2	B 2	
● Part catalogue structure	3	B 3	
● When the parts were revised	4	B 4	
● Abbreviations used in the parts catalogue	4	B 4	
● How to check the part block and serial numbers	5	B 5	
● Models, parts catalogue codes and applicable serial numbers	6	B 6	
● Features of each type	7	B 7	
● Fuel hose, general purpose hoses and vinyl hose	9	B 9	
● Illustrated index	10	B10	
● ENGINE GROUP	13	C 1	2
● PART NO. INDEX	54	F 1	3
● PART NAME INDEX	56	G 1	4



How to refer to the part information

A Reference with "Illustrated index"



B Reference with "Part number index"

PART NO. INDEX

Part Number	Address	Page	Ref.	Part Number	Address	Page
06000				15212-ZW9-000	1-C14	3C
06316-ZW9-000	1-G9	88	1	15220-ZW9-003	1-C14	3C
11000				15332-ZW9-000	1-E8	55
11300-ZW9-405	1-C11	27	1	15332-ZW9-A30	1-E11	5E
11300-ZW9-406	1-C11	27	1	15400-PF8-004	1-C11	27
11340-ZW9-000	1-C11	27	2	15422-ZW9-000	1-C14	3C
11342-ZW9-000	1-C11	27	3	15473-881-000	1-C14	3C
11381-ZW9-003	1-C12	28	1	15474-ZW9-000	1-C14	3C
				15611-921-000	1-C10	2E
				15655-ZW9-000	1-C11	27
12000				16000		
12000-ZW9-405ZA	1-C11	27	4	16010-ZV4-005	1-D4	3E
12155-ZV4-A00	1-C13	29	1	16011-ZV4-005	1-D4	3E
12166-ZW9-000	1-C10	26	1	16013-ZW9-003	1-D4	3E
12209-GB4-681	1-C16	32	1	16016-ZW9-003	1-D4	3E
12210-ZW9-405ZA	1-C10	26	2	16016-ZW9-721	1-D4	3E
12216-ZE2-300	1-E8	55	1	16023-ZW9-003	1-D4	3E
	1-E11	58	1	16024-ZV4-650	1-D4	3E
				16028-ZV4-650	1-D4	3E

Address No. 1-C10

Block No.

Ref No.

CYLINDER HEAD

Service item F.R.T.

- O-RING, 26X2.7 0.1
- PLUG, SPARK 0.2
- O-RING, 9.5X1.5 0.2
- SENSOR ASSY., WATER TEMPERATURE 0.3
- COVER COMP., HEAD 1.8
- PACKING, HEAD COVER 2.4
- GASKET, CYLINDER HEAD 2.4
- OIL SEAL, 20X32X6 3.1
- HEAD COMP., CYLINDER 3.1

Ref. No.	Part No.	Description	Reqd. QTY						Serial No.	Parts catalogue code
			99D1	99D1	1001	1001	1001	1001		
1	12166-ZW9-000	STOPPER, ENGINE SIDE	2	2	2	2	2	2		
2	12210-ZW9-000ZA	HEAD COMP., CYLINDER	1	1	1	1	1	1		
3	12251-ZW9-003	GASKET, CYLINDER HEAD	1	1	1	1	1	1		
4	12310-ZW9-000	COVER COMP., HEAD	1	1	1	1	1	1		
5	12312-ZW9-000	PACKING, HEAD COVER	1	1	1	1	1	1		
6	15611-921-000	CAP, OIL (NO GAUGE)	1	1	1	1	1	1		
7	16617-ZW9-000	HOLDER, CABLE	1	1	1	1	1	1	SC,SG	
	16617-ZW9-010		1	1	1	1	1	1	1001800 LHC,LHD	
			1	1	1	1	1	1	1001801 LHC,LHD	
8	35675-ZW5-003	SENSOR ASSY., WATER	1	1	1	1	1	1		
9	90003-ZW9-000	BOLT, FLANGE, 6X22	1	4	4	4	4	4		
10	90007-ZW9-003	BOLT, FLANGE, 8X83	6	6	6	6	6	6		
11	90011-ZW9-000	BOLT, FLANGE, 6X14(CT200)	1	1	1	1	1	1		
12	90020-ZW9-000	BOLT, FLANGE, 8X40	2	2	2	2	2	2		
13	91202-KJ9-003	OIL SEAL, 20X32X6	1	1	1	1	1	1		
14	91301-805-000	O-RING, 26X2.7	1	1	1	1	1	1		
15	91307-PK2-005	O-RING, 9.5X1.5(HONDA KIKAKI)	1	1	1	1	1	1		
16	98059-55916	PLUG, SPARK (CR5EH-9)	2	2	2	2	2	2		
	98059-55926	PLUG, SPARK (U16FER9)	2	2	2	2	2	2		

2000.09.20 E

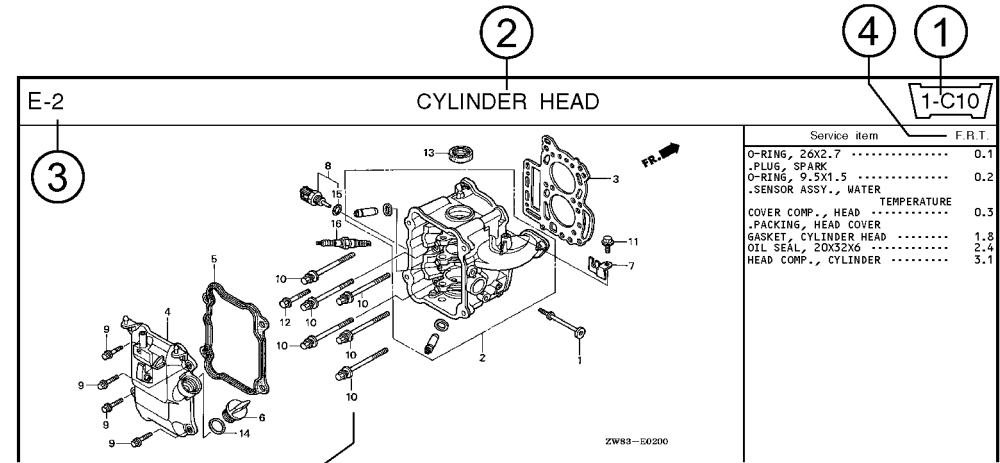
Page No.

C Reference with "Part name index"

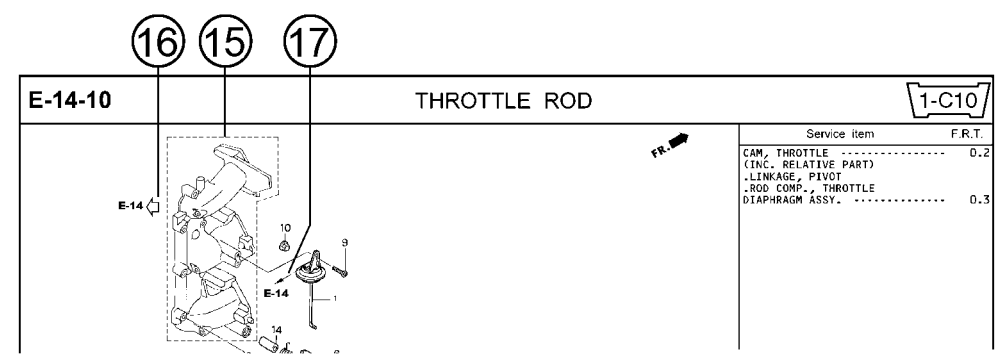
PART NAME INDEX

Part name	Address	Page	Ref.
[A]			
ABSORBER , FUEL	1-E15	62	5
ARMATURE COMP.	1-D11	43	7
ARM COMP. , LINK JOINT	1-G6	85	18
ARM COMP. , SHIFT LINK	1-G6	85	14
ARM COMP. , TILT	1-F15	79	20
ARM , FUEL PUMP ROCKER	1-C16	32	4
ARM , REVERSE LOCK	1-F15	79	18
ARM , SHIFT LINK	1-F11	74	7
ARM , STOPPER	1-D1	33	12
ARM , THROTTLE REMOTE	1-F11	74	6
ARM , VALVE ROCKER	1-C16	32	3
[B]			
BAG , TOOL , 160MM	1-G5	84	10
BAND	1-G6	86	37
BAND B1 , WIRE	1-F6	69	1
BAND , CORD	1-F3	67	18
BAND , TUBE CLIP , 11MM	1-E15	63	20
BAND , TUBE CLIP , 12.5MM	1-E15	63	19

Part catalogue structure



Ref. No.	Part No.	Description	Reqd. QTY						Serial No.	Parts catalogue code
			BF 9/9D1	BFP 9/9D1	BF 10D1	BFP 10D1	BF 10B1	BFP 10B1		
1	12166-ZW9-000	STOPPER, ENGINE SIDE	2	2	2	2	2	2		
2	12210-ZW9-000ZA	HEAD COMP., CYLINDER *NHS* DARK GRAY	1	1	1	1	1	1		
3	12251-ZW9-003	GASKET, CYLINDER HEAD	1	1	1	1	1	1		
4	12310-ZW9-000	COVER COMP., HEAD	1	1	1	1	1	1		
5	12312-ZW9-000	PACKING, HEAD COVER	1	1	1	1	1	1		
6	15611-921-000	CAP, OIL (NO GAUGE)	1	1	1	1	1	1		
7	16617-ZW9-000	HOLDER, CABLE	1	1	1	1	1	1	SC,SG	
	16617-ZW9-010		1	1	1	1	1	1	1001800 LHC,LHD	



- ① **Address number**
 - Address No. is provided (in place of the page No.) to help you refer to the part with the part No. or part name.
- ② **Block title** ③ **Block number**
- ④ **Service item/Flat rate time**
- ⑤ **Reference number**
 - Title number marked with the parenthesis or parentheses indicates that it continues from the previous page.
- ⑥ **Part number** ⑦ **Honda color code**
- ⑧ **Description**
- ⑨ **Assemblies**
 - Sections framed with broken lines in the exploded view drawings are available as complete assemblies. (Their individual parts can also be obtained.)
- ⑩ **Color description**
- ⑪ **Note**
 - Notes are shown with the parentheses in the part name column.
- ⑫ **Required quantity**
 - Required QTY shown in the parenthesis or parentheses indicates the optional part.
 - Required QTY marked with "N" Indicates the optional part that should be selected as needed.
 - Required QTY indicates the number of the part used in the block.
- ⑬ **Serial number**
- ⑭ **Type**
 - When the type column is blank, it indicates that the part is applicable to all types.
 - As the type of the actual unit may differ from the "parts catalogue, type" please refer to "Models, types and applicable serial numbers" for confirmation.
- ⑮ **[Dotted line]**
 - Parts enclosed within a dotted line [] are covered in a different block.
- ⑯ **[Hollow arrow]**
 - A hollow arrow [] indicates the block No. for the parts enclosed within a dotted line [] .
- ⑰ **[Solid arrow]**
 - A solid arrow [] indicates the block No. the part in question is connected to.

When the parts were revised

Abbreviations used in the parts catalogue

1



Be sure to check the serial number!!



Ref. No.	Part No.	Description	Reqd. QTY						Serial No.
			BF 99D1	BFP 9.9D1	BF 10D1	BFP 10D1	BF 10B1	BFP 10B1	
1	12166-ZW9-000	STOPPER, ENGINE SIDE	2	2	2	2	2	2	
2	12210-ZW9-000ZA	HEAD COMP., CYLINDER *NHS*	1	1	1	1	1	1	
3	12251-ZW9-003	GASKET, CYLINDER HEAD	1	1	1	1	1	1	
4	12310-ZW9-000	COVER COMP., HEAD	1	1	1	1	1	1	
5	12312-ZW9-000	PACKING, HEAD COVER	1	1	1	1	1	1	
6	15611-921-000	CAP, OIL (NO GAUGE)	1	1	1	1	1	1	
7	16617-ZW9-000	HOLDER, CABLE (###)	1	1	1	1	1	1	SC, SG LHC, LHD LHC, LHD
	16617-ZW9-010	1	1	1	1	1	1	

The number has been used from the initial model without revision.

When shown at the left side, it is applicable to the models of No.1001801 and the subsequent numbers.

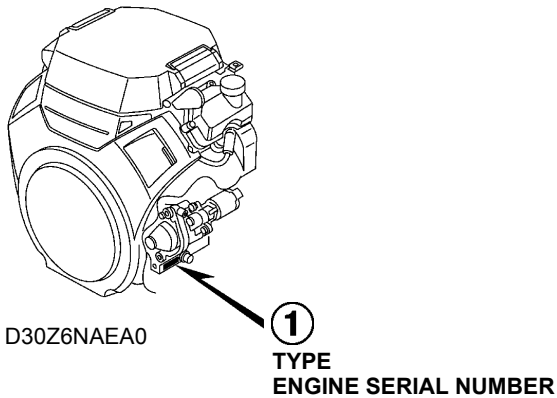
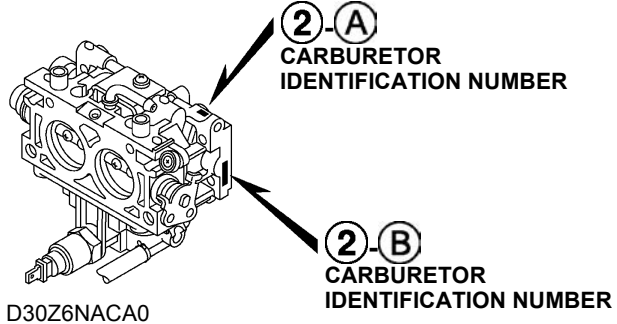
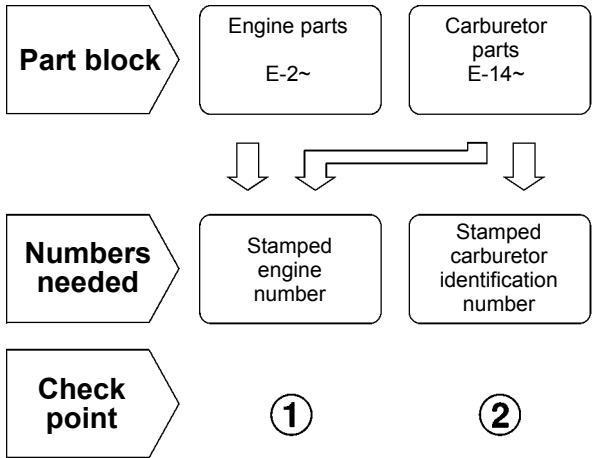
When shown at the right side, it is applicable to the models up to No.1001800.

• The parts listed with "###" at the end of the parts name have limited supply period (parts not for sale).

• The following abbreviations are used in the parts name column.

- | | |
|--|-----------------------------|
| A Ampere | FR.Front |
| A.C. Alternating current | IN.Inlet |
| ASSY. Assembly | L (100L) .Link (100 Links) |
| AT. Automatic transmission | L.Left |
| C.D.I. Capacitive discharge ignition | MMMillimeter |
| COMP. ... Complete | MT.Manual Transmission |
| D.C. Direct current | P.T.O.Power take off |
| EX. Exhaust | R.Right |
| G.F.C.I ... Ground fault circuit interruptor | RR.Rear |
| HEX. Hexagonal | STD.Standard |
| H.S.T. Hydrostatic transmission | T (22T) ...Tooth (22 Teeth) |
| | VVolt |
| | WWatt |

How to check the part block and serial numbers



Models, parts catalogue codes and applicable serial numbers

• Models, parts catalogue codes and applicable serial Nos. given in this parts catalogue can be identified as follows.

Model	Type	Parts catalogue type	Applicable engine serial No.	Applicable carburetor identification No.
GX630	QAFH	QAFH	GCBBK-1000001~	BK07A A
	QKF	QKF		
	QKW1	QKW1		
	QKW2	QKW2		
	QWD	QWD		
	QWF	QWF		
	QZK	QZK		
	SAE1	SAE1		
	VAY	VAY		
	VEPH	VEPH		
	VXAH	VXAH		
	VXC	VXC	GDABK-1000001~	BKL2B A
	VXC2	VXC2		
	VYE3	VYE3	GCBBK-1000001~	BK07A A
VZE1	VZE1			
VZE8	VZE8			

Model	Type	Parts catalogue type	Applicable engine serial No.	Applicable carburetor identification No.
GX660	BAFH	BAFH	GCBCK-1000001~	BK06A A
	TAFH	TAFH		
	TAF5	TAF5		
	TDW1	TDW1		
	TKW1	TKW1		
	TXF3	TXF3		
	VAY	VAY		
	VXEH	VXEH		BK06E A
GX690	BAFH	BAFH	GCBDK-1000001~	BK05A A
	TAFH	TAFH		
	TAF5	TAF5		
	TDW1	TDW1		
	TKW1	TKW1		
	TXF3	TXF3		
	VAY	VAY		
	VXC	VXC	GDACK-1000001~	BKL2A A
	VXC2	VXC2		
	VXEH	VXEH	GCBDK-1000001~	BK05D A
	VYE3	VYE3		BK05A A

* Of carburetor identification numbers, only the portions underlined in the example below are used for registration.

BK 07A A KC ナ
 (A) (B)

Features of each type

• See the following table for the features of each type. (Items in brackets are optional)

Specifications		Model	GX630															
		Type	QAFH	QKF	QKW1	QKW2	QWD	QWF	QZK	SAE1	VAY	VEPH	VXAH	VXC	VXC2	VYE3	VZE1	VZE8
Crankshaft	25.4 mm Ø Straight (L=138)		●	●	●	●	●	●	●									
	28.575 mm Ø Straight (L=162)																	
	36.5 mm Ø Straight (L=175.2)																	
	5/16" Tapered										●	●	●	●	●	●	●	
	25 mm Ø Straight (L=129)									●								
	M10 Tapered																	●
Muffler	High-R	(●)	(●)	(●)	(●)		●	(●)		(●)	(●)	(●)	(●)	(●)		(●)	(●)	
	High-L	(●)	(●)	(●)	(●)			(●)	●	(●)	(●)	(●)	(●)	(●)	●	(●)	(●)	
	Side mount					●						(●)						
Spark arrester			(●)	(●)	(●)	(●)		(●)		(●)	(●)	(●)	(●)	(●)	●	(●)	(●)	
Deflector kit												(●)						
Control box			●		●				●		●	●				●		

Specifications		Model	GX660							
		Type	BAFH	TAFH	TAF5	TDW1	TKW1	TXF3	VAY	VXEH
Crankshaft	25.4 mm Ø Straight (L=138)									
	28.575 mm Ø Straight (L=162)		●	●	●	●	●			
	36.5 mm Ø Straight (L=175.2)	●								
	5/16" Tapered							●	●	
	25 mm Ø Straight (L=129)									
	M10 Tapered									
Muffler	High-R	(●)	(●)		(●)	(●)		(●)	(●)	
	High-L	(●)	(●)	●	(●)	(●)	●	(●)	(●)	
	Side mount									
Spark arrester			(●)	(●)		(●)	(●)		(●)	(●)
Deflector kit										
Control box			●	●			●	●	●	●

1

Specifications		Model	GX690										
		Type	BAFH	TAFH	TAF5	TDW1	TKW1	TXF3	VAY	VXC	VXC2	VXEH	VYE3
Crankshaft	25.4 mm Ø Straight (L=138)												
	28.575 mm Ø Straight (L=162)		●	●	●	●	●						
	36.5 mm Ø Straight (L=175.2)	●											
	5/16" Tapered							●	●	●	●	●	
	25 mm Ø Straight (L=129)												
	M10 Tapered												
Muffler	High-R	(●)	(●)		(●)	(●)		(●)	(●)	(●)	(●)		
	High-L	(●)	(●)	●	(●)	(●)	●	(●)	(●)	(●)	(●)	●	
	Side mount												
Spark arrester		(●)	(●)		(●)	(●)		(●)	(●)	(●)	(●)	●	
Deflector kit													
Control box		●	●			●	●	●				●	

Fuel hose, general purpose hoses and vinyl hose

- The standard part fuel hose, general purpose hose and vinyl hose may be substituted by the coiled bulk part.
- When ordering the standard part fuel hose, general purpose hose and vinyl hose use the bulk part number written in the parts catalog in brackets () underneath the part name.
- When exchanging the hose, cut and use at the specified length as mentioned in the part name.
(For the method of cutting the bulk part, and method of filling out orders etc., please refer to the instructions issued with the bulk part.)

Bulk part number of fuel hose, general purpose hose and vinyl hose.

Example: 9 5 0 0 1 - 7 5 0 0 1 - 5 0 M

Bulk part number:
Refers to the bulk part.

Marking code (fuel hose and general purpose hose)

Change code (Vinyl hose)

Indicates number mark or change sequence, however, the code for the bulk part must be strictly 0 (zero).

Types of code:

- | | | | | | |
|-------------|--|----------------|--|--------------|---|
| • Fuel hose | 2: Red outside braid
(3 mm inside dia. only) | • General hose | 1: Ash gray
2: Ash gray
3: Black
5: Black | • Vinyl hose | 1: Clear
2: Black
3: Light red
6: Light red
7: Pale black |
| | 5: Black inside braid | | | | |
| | 3: Red (3 mm inside dia. only) | | | | |
| | 4: Ash gray with red stripe
(3 mm inside dia. only) | | | | |
| | 6: Black | | | | |

Lengths:

- 001: 1 m (standard)
003: 3 m
008: 8 m } Application or specification of some parts is not settled.

I.D code: (fuel hose and general purpose hose)

- | | | | | |
|------------|--------------------|--------------------|-----------------------------|-----------------------------|
| 30: 3.0 mm | 50: 5.0 mm | 70: 7.0 mm | 11: 11 mm | 12: 12 (outside dia. 17) mm |
| 35: 3.5 mm | 55: 5.3 mm, 5.5 mm | 75: 7.3 mm, 7.5 mm | 91: 12 (outside dia. 15) mm | 14: 14 mm |
| 45: 4.5 mm | 65: 6.5 mm | 80: 8.0 mm | 92: 12 (outside dia. 16) mm | 17: 17 mm |

ID./OD. code: (vinyl hose)

- | | | | | |
|-------------------------|--------------------------|---------------------------|---------------------------|---------------------------|
| 01: ID. 2.9, OD. 6.8 mm | 12: ID. 5.0, OD. 7.0 mm | 21: ID. 8.0, OD. 9.0 mm | 37: ID. 11.0, OD. 15.0 mm | 50: ID. 16.0, OD. 19.0 mm |
| 03: ID. 3.0, OD. 6.0 mm | 10: ID. 5.0, OD. 8.0 mm | 23: ID. 8.0, OD. 12.0 mm | 38: ID. 12.0, OD. 13.0 mm | 55: ID. 17.5, OD. 20.5 mm |
| 05: ID. 3.5, OD. 6.5 mm | 11: ID. 5.0, OD. 9.0 mm | 25: ID. 9.0, OD. 11.0 mm | 39: ID. 12.0, OD. 14.0 mm | 60: ID. 22.0, OD. 27.0 mm |
| 07: ID. 4.0, OD. 7.0 mm | 14: ID. 6.0, OD. 9.0 mm | 27: ID. 9.0, OD. 13.0 mm | 40: ID. 12.0, OD. 16.0 mm | |
| 08: ID. 4.5, OD. 6.5 mm | 17: ID. 7.0, OD. 9.0 mm | 33: ID. 10.0, OD. 14.0 mm | 43: ID. 13.0, OD. 15.0 mm | |
| 09: ID. 4.5, OD. 8.0 mm | 19: ID. 7.0, OD. 11.0 mm | 36: ID. 11.0, OD. 13.0 mm | 45: ID. 14.0, OD. 18.0 mm | |

Hose type:

- 1: Fuel hose
3: Vinyl hose
5: General hose

⊙ **CAUTION: It is DANGEROUS to confuse the fuel hose with the general purpose hose or vinyl hose.**

Never use a general purpose hose or vinyl hose in place of a fuel hose or vice versa. Always use the correct bulk part in the parts catalogue, according to the service manual or the instructions issued with the bulk part.

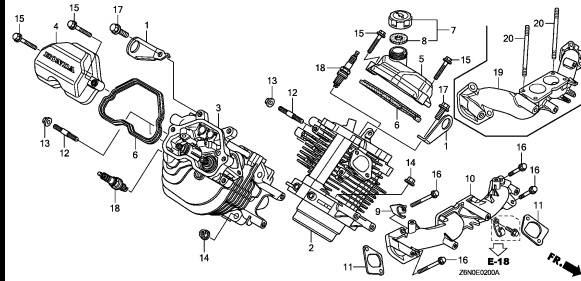
ENGINE GROUP

B10

E-2

CYLINDER HEAD

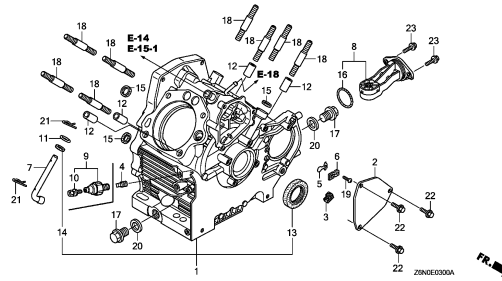
C 1



E-3

CRANKCASE

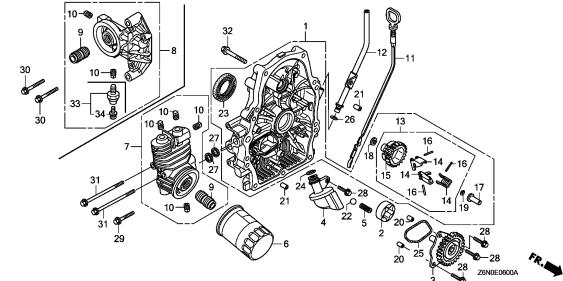
C 3



E-6

CRANKCASE COVER

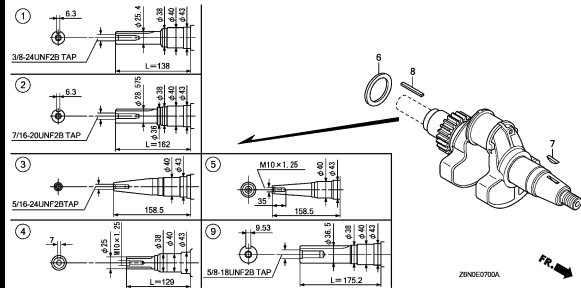
C 5



E-7

CRANKSHAFT

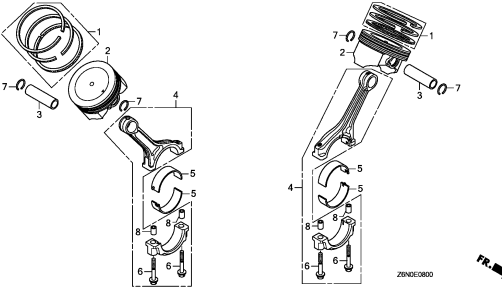
C 8



E-8

PISTON

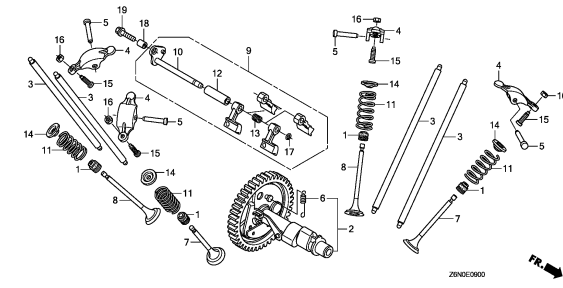
C 9



E-9

CAMSHAFT

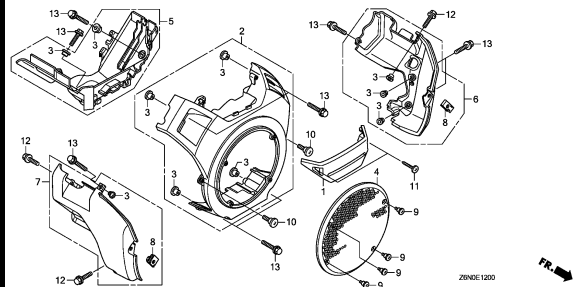
C10



E-12

FAN COVER

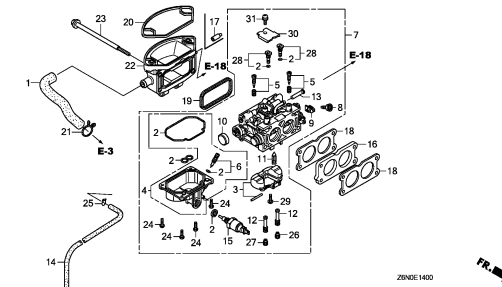
C11



E-14

CARBURETOR(1)

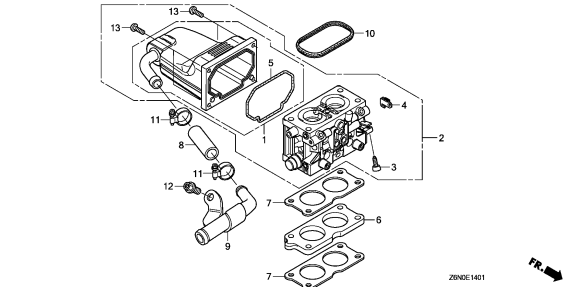
C12



E-14-1

CARBURETOR(2)

C15



2

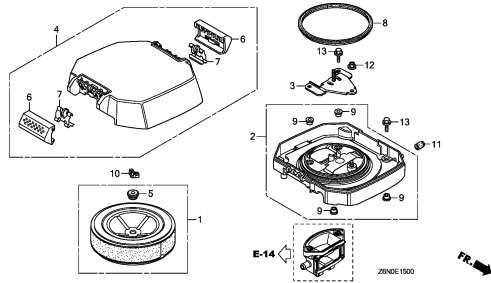
ENGINE GROUP

B11

E-15

AIR CLEANER(1)

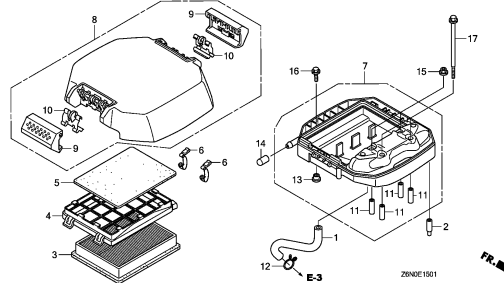
C16



E-15-1

AIR CLEANER(2)

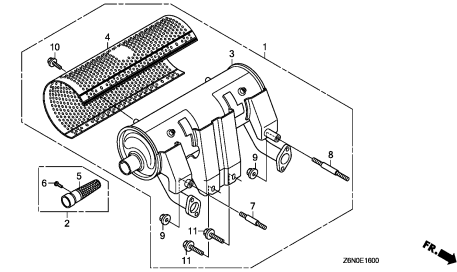
D 2



E-16

MUFFLER(HIGH-R)

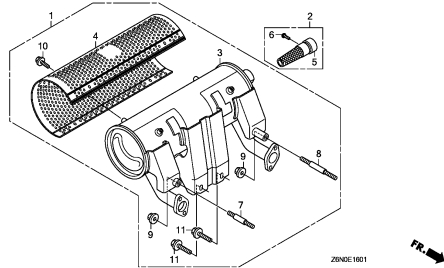
D 3



E-16-1

MUFFLER(HIGH-L)

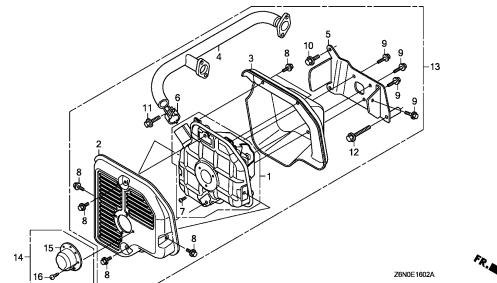
D 5



E-16-2

MUFFLER(SIDE MOUNT)

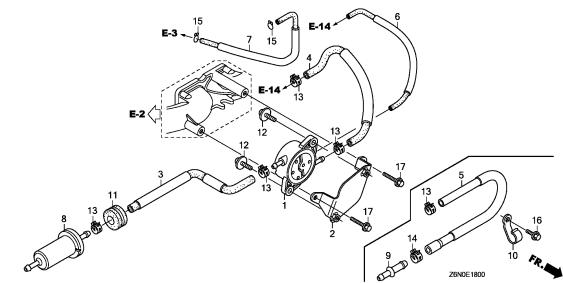
D 7



E-18

FUEL PUMP

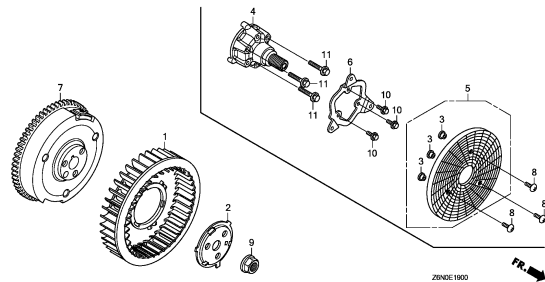
D 9



E-19

FLYWHEEL

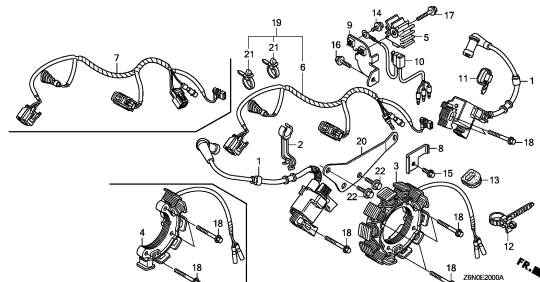
D11



E-20

IGNITION COIL

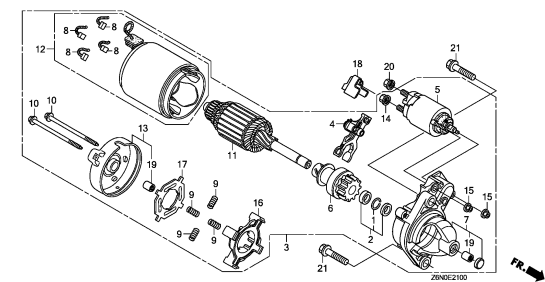
D12



E-21

STARTER MOTOR

D14



2

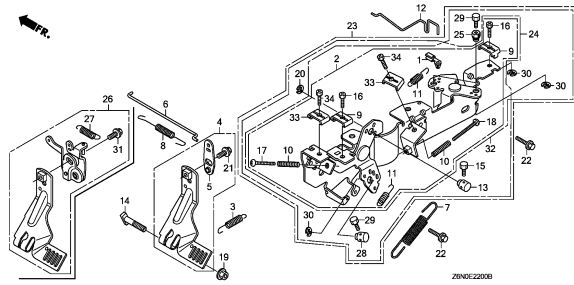
ENGINE GROUP

B12

E-22

CONTROL

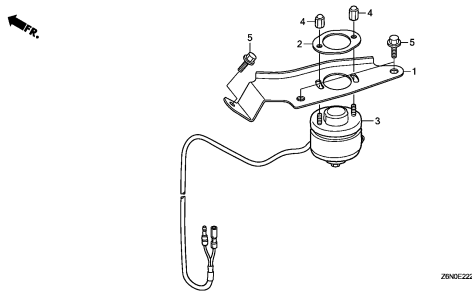
D15



E-22-20

AUTO THROTTLE

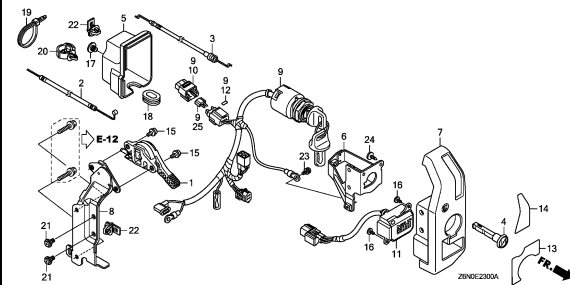
E 2



E-23

CONTROL BOX

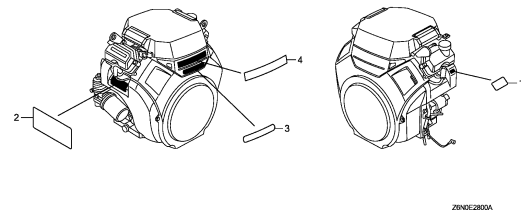
E 3



E-28

LABEL

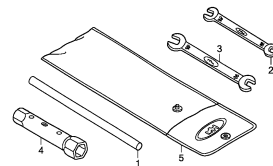
E 5



E-29

TOOL

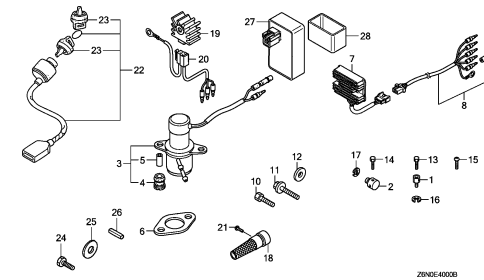
E 6



E-40

OTHER PARTS(FUEL PUMP)(REGULATOR RECTIFIER)

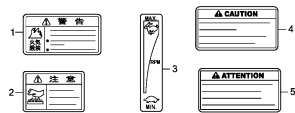
E 7



E-40-1

OTHER PARTS(LABEL)

E 9

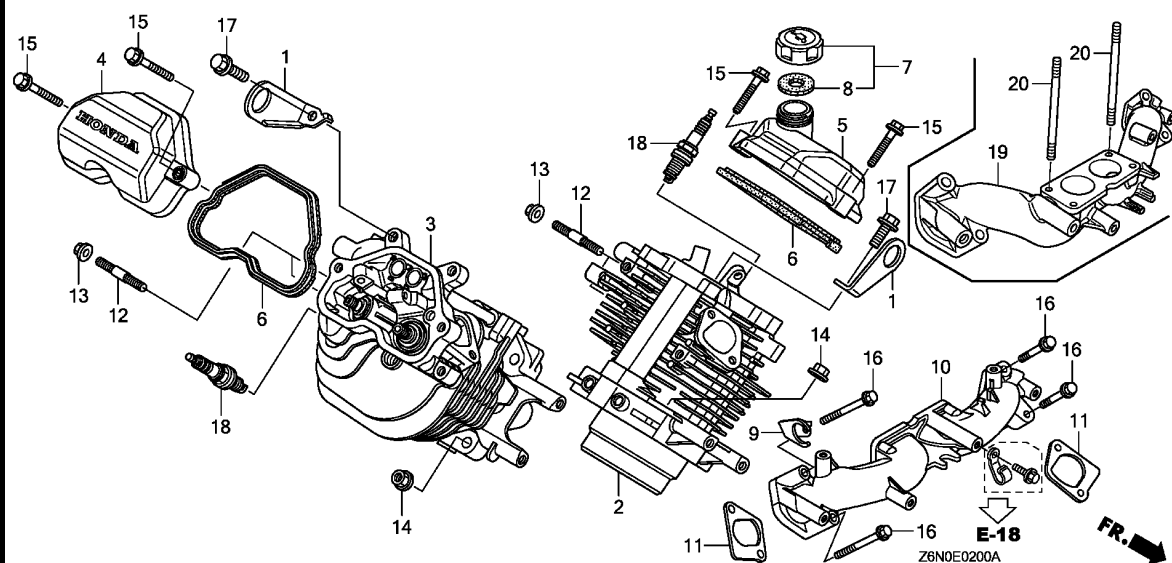


2

E-2

CYLINDER HEAD

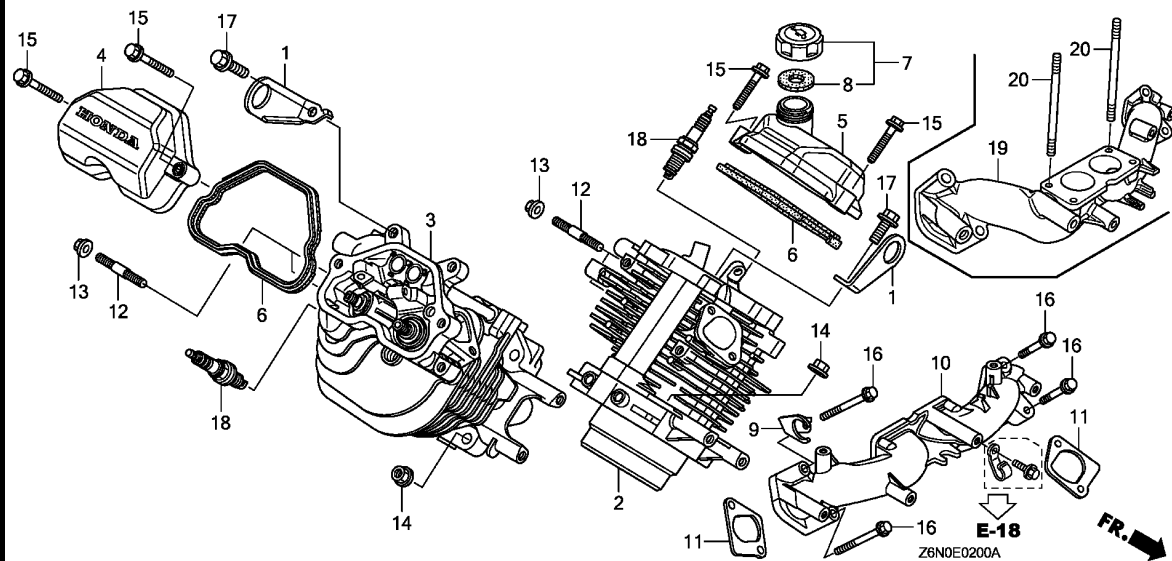
C 1



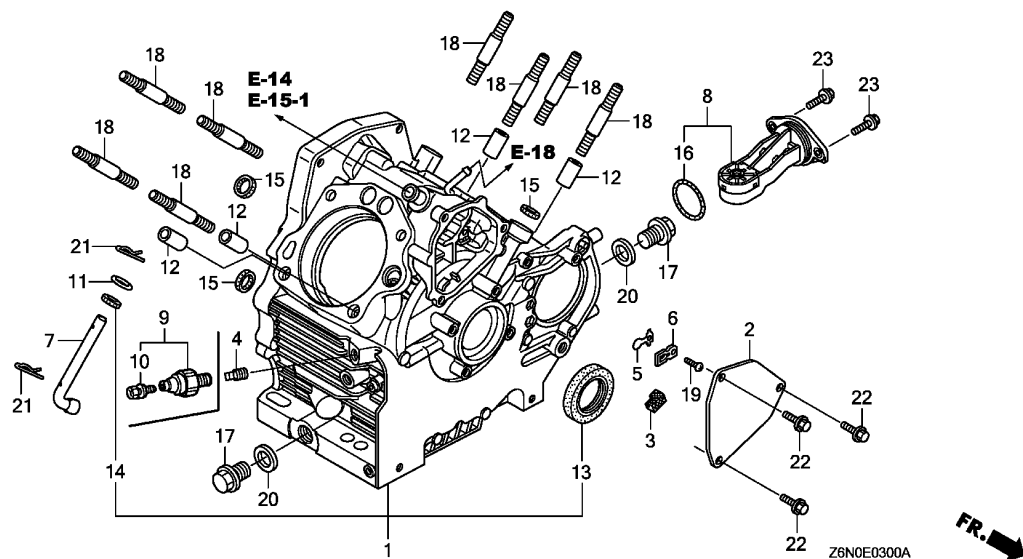
Ref. No.	L.O.N. (Relative ref. Number)	Description	F.R.T.
----------	-------------------------------	-------------	--------

Ref. No.	Part No.	Description	Reqd. QTY			Serial No.	Parts catalogue code
			GX 630	GX 660	GX 690		
1	11911-Z6L-000	HANGER, ENGINE	2	2	2		
2	12110-Z6L-000	HEAD COMP., CYLINDER (#1) ...	1	-	1	-----	BAFH,QAFH,QKF,QKW1,QKW2,QWD,QWF,QZK,SAE1,TAFH,TAF5,TDW1,TKW1,TFX3 VAY,VEPH,VXAH,VXEH,VYE3,VZE1,VZE8
	12110-Z6L-900	-	1	-	-----	VXC,VXC2
3	12120-Z6L-000	HEAD COMP., CYLINDER (#2) ...	1	-	1	-----	BAFH,QAFH,QKF,QKW1,QKW2,QWD,QWF,QZK,SAE1,TAFH,TAF5,TDW1,TKW1,TFX3 VAY,VEPH,VXAH,VXEH,VYE3,VZE1,VZE8
	12120-Z6L-900	-	1	-	-----	VXC,VXC2
4	12311-Z6L-000	COVER, CYLINDER HEAD	1	1	1		
5	12311-Z6L-800	COVER, CYLINDER HEAD	1	1	1		
6	12312-Z6L-000	PACKING, HEAD COVER	2	2	2		
7	15600-Z6L-000	CAP ASSY., OIL FILLER	1	1	1		
8	15625-Z6L-000	PACKING, OIL FILLER CAP	1	1	1		
9	16722-Z6L-000	STAY, FUEL TUBE GROMMET	1	-	1	-----	BAFH,QAFH,QKF,QKW1,QKW2,QWD,QWF,QZK,SAE1,TAFH,TAF5,TDW1,TKW1,TFX3 VAY,VEPH,VXAH,VXEH,VYE3,VZE1,VZE8
10	17101-Z6L-000	MANIFOLD, INTAKE	1	-	1	-----	BAFH,QAFH,QKF,QKW1,QKW2,QWD,QWF,QZK,SAE1,TAFH,TAF5,TDW1,TKW1,TFX3 VAY,VEPH,VXAH,VXEH,VYE3,VZE1,VZE8
			-	1	-		
11	17151-Z6L-000	PACKING, INTAKE MANIFOLD	2	2	2		
12	92900-08022-0E	BOLT, STUD, 8X22	4	4	4		
13	94050-08000	NUT, FLANGE, 8MM	4	4	4		
14	94050-10000	NUT, FLANGE, 10MM	8	8	8		
15	95701-06030-00	BOLT, FLANGE, 6X30	4	4	4		
16	95701-06050-00	BOLT, FLANGE, 6X50	4	4	4		

2



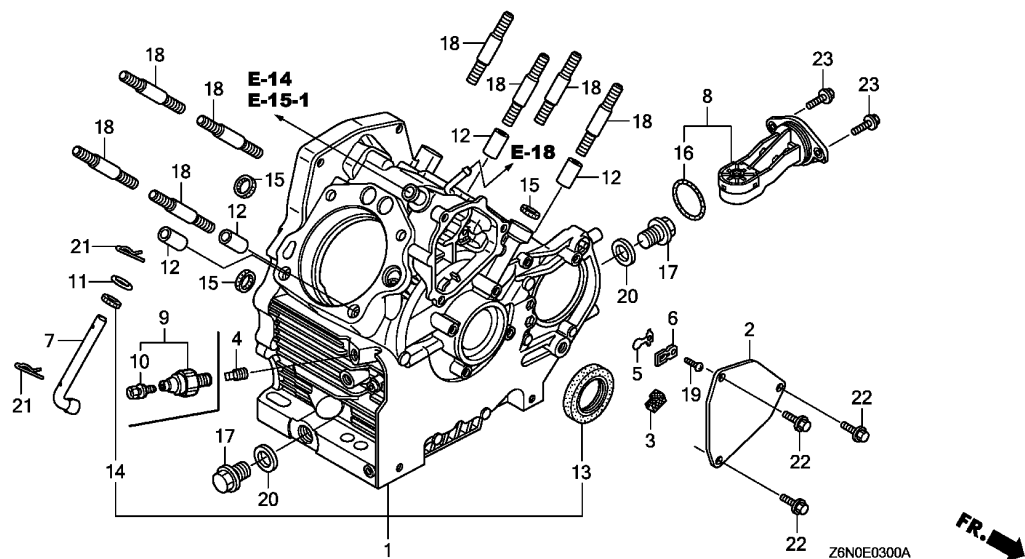
Ref. No.	Part No.	Description	Reqd. QTY			Serial No.	Parts catalogue code
			GX 630	GX 660	GX 690		
17	95701-08016-00	BOLT, FLANGE, 8X16	2	2	2		
18	98079-5547G	PLUG, SPARK (ZFR5F-4)	2	-	2	-----	VXC,VXC2
	98079-5587G	PLUG, SPARK (ZFR5F)	2	-	2	-----	BAFH,QAFH,QKF,QKW1,QKW2,QWD,QWF,QZK,SAE1,TAFH,TAF5,TDW1,TKW1,TF3 VAY,VEPH,VXAH,VXEH,VYE3,VZE1,VZE8
19	17101-Z6M-000	MANIFOLD, INTAKE	1	-	1	-----	VXC,VXC2
20	90043-Z6L-000	BOLT, STUD, 6X106	2	-	2	-----	VXC,VXC2



Ref. No.	L.O.N.	(Relative ref. Number) Description	F.R.T.
----------	--------	------------------------------------	--------

Ref. No.	Part No.	Description	Reqd. QTY			Serial No.	Parts catalogue code	
			GX 630	GX 660	GX 690			
1	11100-Z6L-000	CRANKCASE ASSY.	1	1	1	-----	BAFH,QAFH,QKF,QKW1,QKW2,QWD,QWF,SAE1,TAFH,TDW1,TKW1,VAY	
	11100-Z6L-800	1	1	1	-----	QZK,TFX3,VEPH,VXAH,VXEH,VYE3,VZE1,VZE8	
	11100-Z6L-810	1	1	1	-----	TAF5,VXC	
	11100-Z6L-820	1	-	1	-----	VXC2	
2	12356-Z6L-000	COVER, BREATHER	1	1	1	-----		
3	12367-Z6L-000	FILTER, BREATHER	1	1	1	-----		
4	15424-Z6L-000	BOLT, SEALING	1	1	1	-----	QWF,QZK,TDW1,VEPH,VXAH,VXC2,VXEH,VYE3,VZE1,VZE8	
			1	-	-	1000099	-----	QWD
5	15571-ZM7-003	VALVE, OIL OUTLET	1	1	1	-----		
6	15572-Z6L-000	PLATE, STOPPER	1	1	1	-----		
7	16541-Z6L-000	SHAFT, GOVERNOR ARM	1	-	1	-----	BAFH,QAFH,QKF,QKW1,QKW2,QWD,QWF,QZK,SAE1,TAFH,TAF5,TDW1,TKW1,TFX3	
			-	1	-	-----	VAY,VEPH,VXAH,VXEH,VYE3,VZE1,VZE8	
	16541-Z6L-010	1	-	1	-----	VXC,VXC2	
8	35480-Z6L-003	SWITCH ASSY., OIL LEVEL	1	1	1	-----	QZK,TFX3,VEPH,VXAH,VXC2,VXEH,VYE3,VZE1,VZE8	
9	37240-ZG5-004	SWITCH, OIL PRESSURE	1	1	1	-----	BAFH,QAFH,QKF,QKW1,QKW2,SAE1,TAFH,TAF5,TKW1,TFX3,VAY,VXC	
			1	-	-	1000098	-----	QWD
10	90002-ZG5-004	SCREW-WASHER, 4X8	1	1	1	-----	BAFH,QAFH,QKF,QKW1,QKW2,SAE1,TAFH,TAF5,TKW1,TFX3,VAY,VXC	
			1	-	-	1000098	-----	QWD
11	90404-Z6L-000	WASHER, PLAIN (10MM)	1	1	1	-----		
12	90709-Z6L-000	DOWEL PIN, 12X20	4	4	4	-----		
13	91201-Z6L-003	OIL SEAL, 38X58X9	1	1	1	-----		
14	91203-Z6L-003	OIL SEAL, 10X16X5	1	1	1	-----		
15	91308-Z6L-003	PACKING, OIL PASS	3	3	3	-----		
16	91309-Z6L-000	O-RING, 37.9X2.4	1	1	1	-----	QZK,TFX3,VEPH,VXAH,VXC2,VXEH,VYE3,VZE1,VZE8	
17	92800-20000	BOLT, DRAIN PLUG, 20MM	2	2	2	-----		





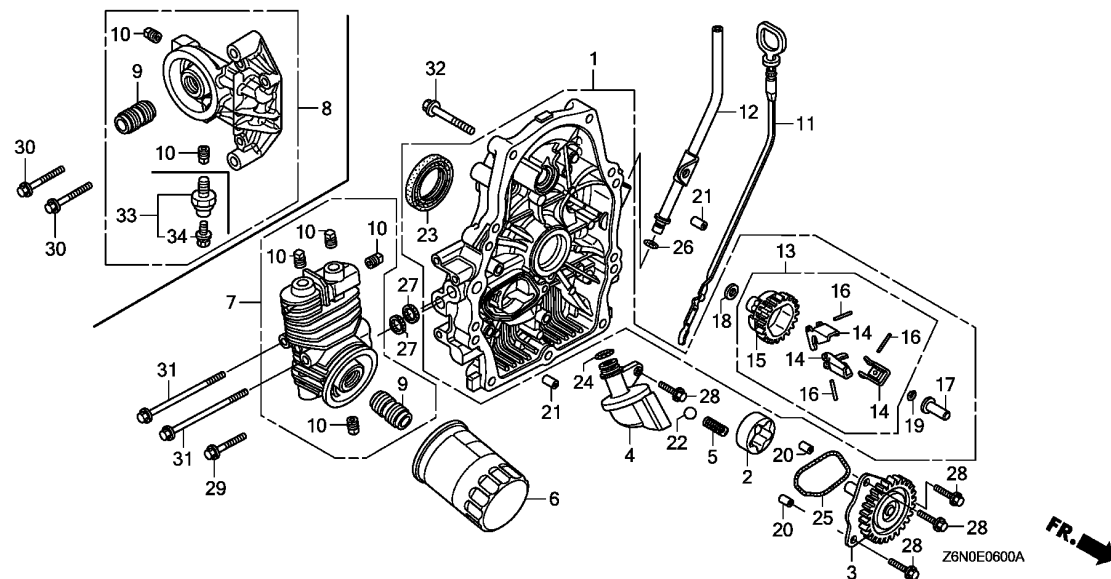
2

Ref. No.	Part No.	Description	Reqd. QTY			Serial No.	Parts catalogue code
			GX 630	GX 660	GX 690		
18	92900-10040-0B	BOLT, STUD, 10X40	8	8	8		
19	93500-03008-0A	SCREW, PAN, 3X8	1	1	1		
20	94109-20000	WASHER, DRAIN PLUG, 20MM	2	2	2		
21	94251-10000	PIN, LOCK, 10MM	2	2	2		
22	95701-06014-00	BOLT, FLANGE, 6X14	3	3	3		
23	95701-06016-00	BOLT, FLANGE, 6X16	2	2	2	-----	QZK, TXF3, VEPH, VXAH, VXC2, VXEH, VYE3, VZE1, VZE8

E-6

CRANKCASE COVER

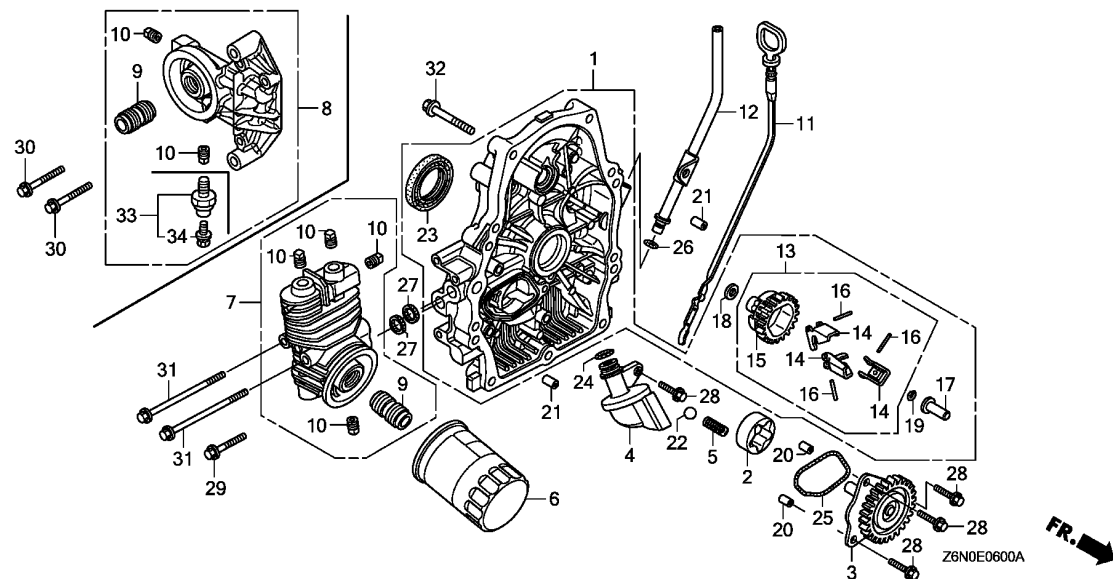
C 5



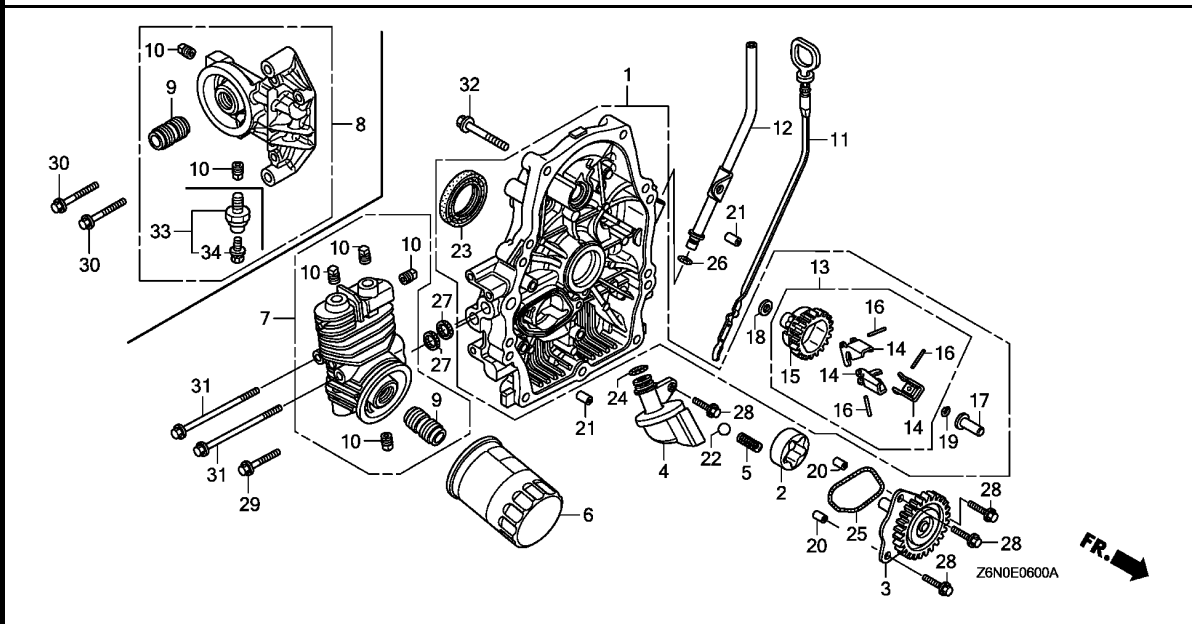
Ref. No.	L.O.N.	(Relative ref. Number) Description	F.R.T.
----------	--------	------------------------------------	--------

Ref. No.	Part No.	Description	Reqd. QTY			Serial No.	Parts catalogue code
			GX 630	GX 660	GX 690		
1	11300-Z6L-000	COVER ASSY., CRANKCASE	1	-	1	-----	BAFH,QAFH,QKF,QKW1,QKW2,QWD,QWF,QZK,SAE1,TAFH,TAF5,TDW1,TKW1,TFX3 VAY,VEPH,VXAH,VXEH,VZE1,VZE8
	11300-Z6L-010	-	1	-	-----	VXC,VXC2,VYE3
2	15133-Z6L-000	ROTOR, OIL PUMP OUTER	1	1	1	-----	TAF5,TFX3,VAY
3	15140-Z6L-000	GEAR COMP., OIL PUMP	-	1	1	-----	
	15140-Z6L-010	1	1	1	-----	
4	15220-Z6L-000	STRAINER COMP., OIL	1	1	1	-----	
5	15232-Z6L-000	SPRING, RELIEF VALVE	1	1	1	-----	
6	15400-RTA-004	CARTRIDGE, OIL FILTER (TOYO ROKI)	1	1	1	-----	QAFH,QKF,QKW1,QKW2,QWF,QZK,SAE1,VAY,VEPH,VXC,VXC2,VYE3,VZE1,VZE8
7	15410-Z6L-000	BASE COMP., OIL FILTER	1	-	1	-----	
		-	1	1	-----	
8	15410-Z6L-800	BASE COMP., OIL FILTER	1	-	-	-----	VXAH
		1	-	-	1000098	QWD
	15410-Z6L-820	1	-	-	1000099	QWD
9	15423-Z6L-000	HOLDER, OIL FILTER	1	1	1	-----	
10	15424-Z6L-000	BOLT, SEALING	2	-	-	-----	VXAH
		2	-	-	1000098	QWD
		4	-	-	-----	QAFH,QKF,QKW1,QKW2,QWF,QZK,SAE1,VAY,VEPH,VXC,VXC2,VYE3,VZE1,VZE8
		-	4	4	-----	
		1	-	-	1000099	QWD
11	15655-Z6L-000	GAUGE COMP., OIL LEVEL	1	1	1	-----	
12	15665-Z6L-000	PIPE COMP., OIL LEVEL	1	1	1	-----	
13	16510-Z6L-000	GOVERNOR ASSY.	1	-	1	-----	BAFH,QAFH,QKF,QKW1,QKW2,QWD,QWF,QZK,SAE1,TAFH,TAF5,TDW1,TKW1,TFX3 VAY,VEPH,VXAH,VXEH,VZE1,VZE8
		-	1	-	-----	

2

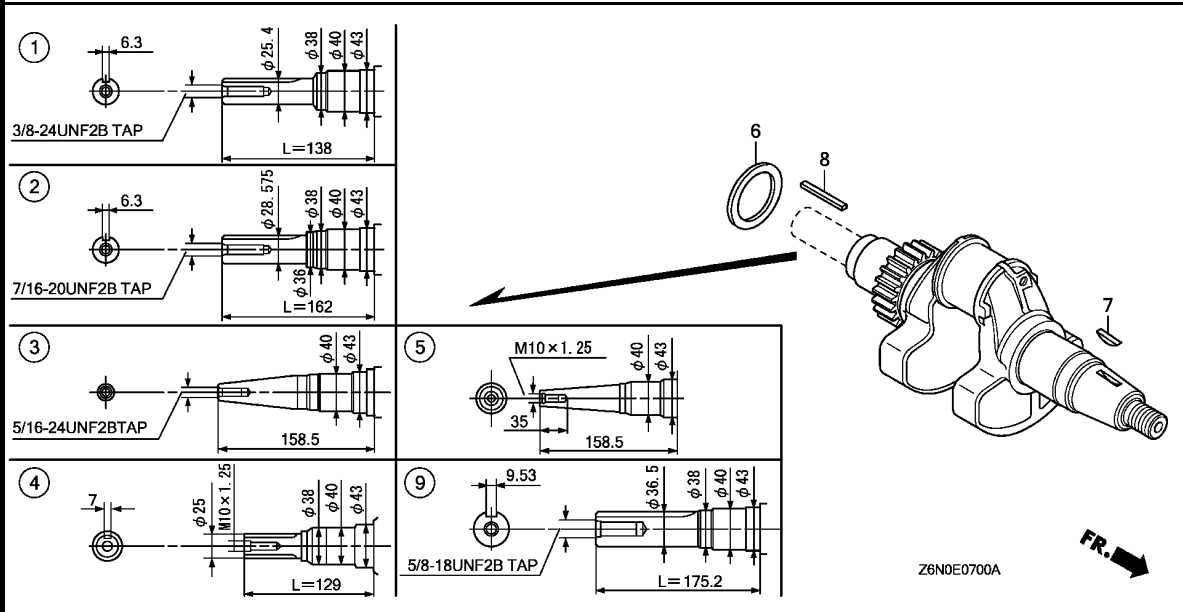


Ref. No.	Part No.	Description	Reqd. QTY			Serial No.	Parts catalogue code
			GX 630	GX 660	GX 690		
13)	16510-Z6L-010	GOVERNOR ASSY.	1	-	1	-----	VXC,VXC2,VYE3
14	16511-Z6L-300	WEIGHT, GOVERNOR	3	-	3	-----	BAFH,QAFH,QKF,QKW1,QKW2,QWD,QWF,QZK,SAE1,TAFH,TAF5,TDW1,TKW1,TFX3 VAY,VEPH,VXAH,VXEH,VZE1,VZE8
	16511-Z6L-310	-	3	-	-----	VXC,VXC2,VYE3
15	16512-Z6L-300	HOLDER, GOVERNOR WEIGHT	1	-	1	-----	BAFH,QAFH,QKF,QKW1,QKW2,QWD,QWF,QZK,SAE1,TAFH,TAF5,TDW1,TKW1,TFX3 VAY,VEPH,VXAH,VXEH,VZE1,VZE8
	16512-Z6L-310	-	1	-	-----	VXC,VXC2,VYE3
16	16513-Z6L-000	PIN, GOVERNOR WEIGHT	3	3	3		
17	16531-Z6L-000	SLIDER, GOVERNOR	1	1	1		
18	90403-Z6L-000	WASHER, 6X16	1	1	1		
19	90602-ZE1-000	CLIP, GOVERNOR HOLDER	1	1	1		
20	90707-Z6L-000	DOWEL PIN, 8X10	2	2	2		
21	90708-Z6L-000	DOWEL PIN, 8X14	2	2	2		
22	90902-Z6L-000	BALL, STEEL, #15 (15/32)	1	1	1		
23	91202-Z6L-003	OIL SEAL, 38X58X9	1	1	1		
24	91301-Z6L-003	O-RING, 14.8X2.4	1	1	1		
25	91302-Z6L-003	O-RING, OIL PUMP	1	1	1		
26	91308-PH9-000	O-RING, 8.8X1.9	1	1	1		
27	91308-Z6L-003	PACKING, OIL PASS	2	2	2		
28	95701-06020-00	BOLT, FLANGE, 6X20	4	4	4		
29	95701-06028-00	BOLT, FLANGE, 6X28	1	1	1		
30	95701-06035-00	BOLT, FLANGE, 6X35	2	-	-	-----	QWD,VXAH



Ref. No.	Part No.	Description	Reqd. QTY			Serial No.	Parts catalogue code
			GX 630	GX 660	GX 690		
31	95701-06090-00	BOLT, FLANGE, 6X90	2	-	-	-----	QAFH,QKF,QKW1,QKW2,QWF,QZK,SAE1,VAY,VEPH,VXC,VXC2,VYE3,VZE1,VZE8
32	95701-08045-00	BOLT, FLANGE, 8X45	-	2	2	-----	
33	37240-ZG5-004	SWITCH, OIL PRESSURE	1	-	-	1000099	----- QWD
34	90002-ZG5-004	SCREW-WASHER, 4X8	1	-	-	1000099	----- QWD





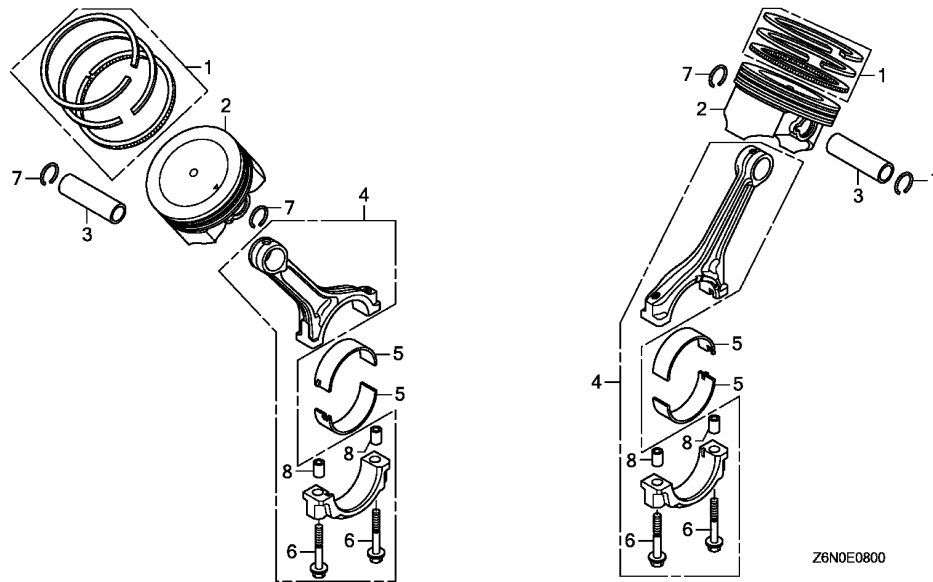
Ref. No.	L.O.N.	(Relative ref. Number) Description	F.R.T.

Ref. No.	Part No.	Description	Reqd. QTY			Serial No.	Parts catalogue code
			GX 630	GX 660	GX 690		
1	13310-Z6L-000	CRANKSHAFT COMP. (L=138)	1	-	-	-----	QAFH,QKF,QKW1,QKW2,QWD,QWF,QZK
2	13310-Z6L-600	CRANKSHAFT COMP. (L=162)	-	1	1	-----	TAFH,TAF5,TDW1,TKW1,TF3
3	13310-Z6L-620	CRANKSHAFT COMP.	1	1	1	-----	VAY,VEPH,VXAH,VXC,VXC2,VXEH,VYE3,VZE1
4	13310-Z6L-640	CRANKSHAFT COMP. (L=129)	1	-	-	-----	SAE1
5	13310-Z6L-650	CRANKSHAFT COMP.	1	-	-	-----	VZE8
6	90402-Z6L-000	WASHER, CRANKSHAFT THRUST ...	1	1	1	-----	
7	90741-ZE2-000	KEY, SPECIAL WOODRUFF, 25X18	1	1	1	-----	
8	90745-ZE2-600	KEY, 6.3X6.3X43	1	-	1	-----	QKW1,QWF,TAF5
			-	1	1	-----	TF3
9	13310-Z6L-610	CRANKSHAFT COMP. (L=175.2) ..	-	1	1	-----	BAFH

E-8

PISTON

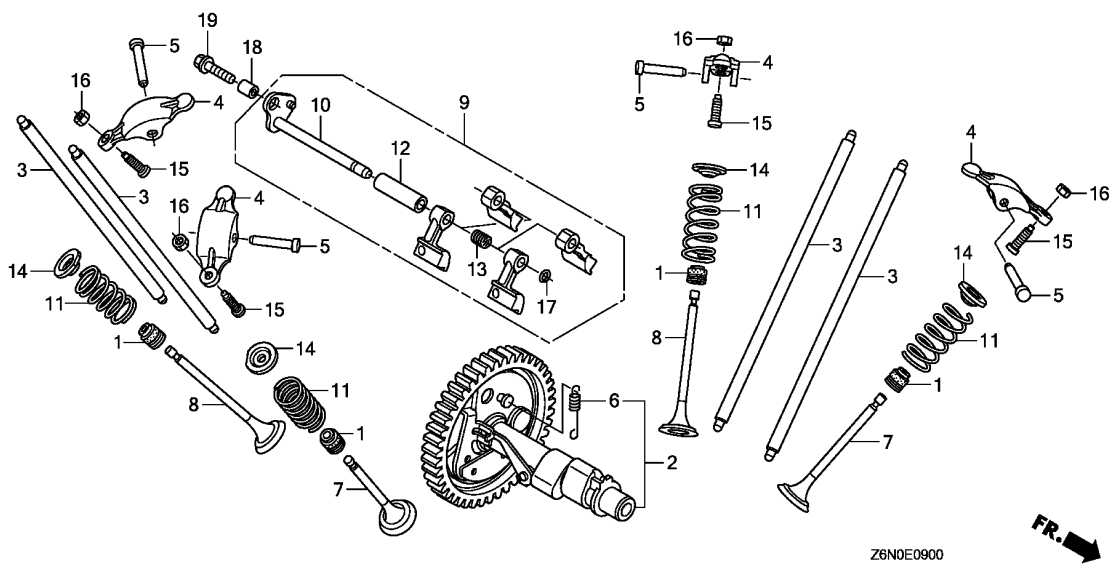
C 9



Ref. No.	L.O.N. (Relative ref. Number)	Description	F.R.T.
----------	-------------------------------	-------------	--------

Ref. No.	Part No.	Description	Reqd. QTY			Serial No.	Parts catalogue code
			GX 630	GX 660	GX 690		
1	13010-Z6L-003	RING SET, PISTON (STD.) (TEIKOKU)	2	2	2		
2	13101-Z6L-000	PISTON	2	2	2		
3	13111-Z6L-000	PIN, PISTON	2	2	2		
4	13210-Z6L-000	ROD ASSY., CONNECTING	2	2	2		
5	13211-Z6L-003	BEARING A, CONNECTING ROD ...	4	4	4		
6	90001-Z6L-000	BOLT, CONNECTING ROD, 7X38 ..	4	4	4		
7	90551-ZE1-000	CLIP, PISTON PIN, 18MM	4	4	4		
8	90705-Z6L-000	DOWEL PIN, 9X10	4	4	4		

2



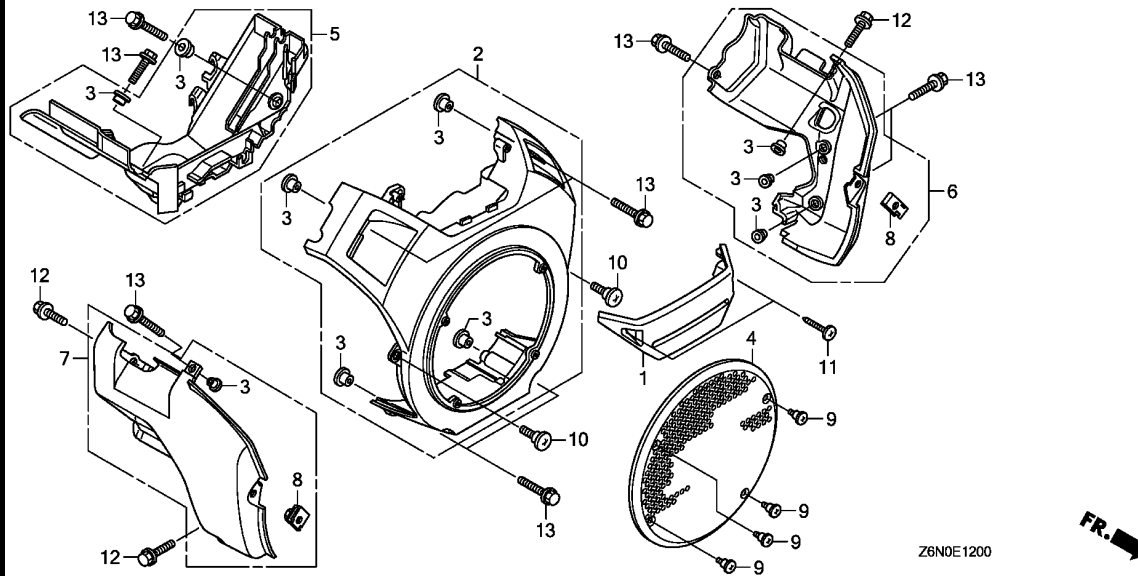
Ref. No.	L.O.N.	(Relative ref. Number) Description	F.R.T.
----------	--------	------------------------------------	--------

Ref. No.	Part No.	Description	Reqd. QTY			Serial No.	Parts catalogue code
			GX 630	GX 660	GX 690		
1	12208-Z6L-003	SEAL, VALVE STEM	4	4	4		
2	14100-Z6L-000	CAMSHAFT ASSY.	1	1	1		
3	14410-Z6L-000	ROD COMP., PUSH	4	4	4		
4	14431-Z6L-000	ARM, VALVE ROCKER	4	4	4		
5	14461-Z6L-000	SHAFT, ROCKER ARM	4	4	4		
6	14568-Z6L-000	SPRING, WEIGHT RETURN	1	1	1		
7	14711-Z6L-000	VALVE, IN.	2	-	2	-----	----- BAFH,QAFH,QKF,QKW1,QKW2,QWD,QWF,QZK,SAE1,TAFH,TAF5,TDW1,TKW1,TXF3 VAY,VEPH,VXAH,VXEH,VYE3,VZE1,VZE8
	14711-Z6L-900	-	2	-	-----	----- VXC,VXC2
8	14721-Z6L-000	VALVE, EX.	2	-	2	-----	----- BAFH,QAFH,QKF,QKW1,QKW2,QWD,QWF,QZK,SAE1,TAFH,TAF5,TDW1,TKW1,TXF3 VAY,VEPH,VXAH,VXEH,VYE3,VZE1,VZE8
	14721-Z6L-900	-	2	-	-----	----- VXC,VXC2
9	14730-Z6L-000	LIFTER ASSY., VALVE	1	1	1		
10	14735-Z6L-000	SHAFT COMP., VALVE LIFTER ...	1	1	1		
11	14751-Z6L-000	SPRING, VALVE	4	4	4		
12	14763-Z6L-000	COLLAR, VALVE LIFTER	1	1	1		
13	14764-Z6L-000	SPRING, VALVE LIFTER	1	1	1		
14	14771-ZE1-000	RETAINER, IN. VALVE SPRING ..					
		(IN./EX.)	4	4	4		
15	90012-Z6L-000	SCREW, TAPPET ADJUSTING	4	4	4		
16	90206-Z6L-000	NUT, TAPPET ADJUSTING	4	4	4		
17	90602-ZE1-000	CLIP, GOVERNOR HOLDER	1	1	1		
18	90707-Z6L-000	DOWEL PIN, 8X10	1	1	1		
19	95701-06022-00	BOLT, FLANGE, 6X22	1	1	1		

E-12

FAN COVER

C11



Ref. L.O.N. (Relative ref. Number) F.R.T.
No. Description

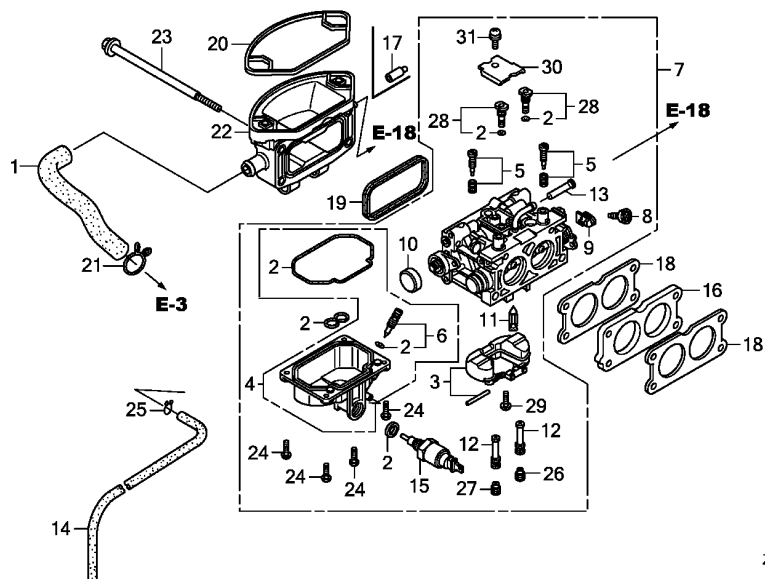
Ref. No.	Part No.	Description	Reqd. QTY			Serial No.	Parts catalogue code
			GX 630	GX 660	GX 690		
1	16715-Z6L-000	COVER, FUEL PUMP	1	1	1		
2	19610-Z6L-000ZA	COVER COMP., FAN *R280*.....POWER RED	1	-	1	-----	BAFH,QAFH,QKF,QKW1,QKW2,QWD,QWF,QZK,SAE1,TAFH,TAF5,TDW1,TKW1,TFX3 VAY,VEPH,VXAH,VXEH,VYE3,VZE1,VZE8
	19610-Z6L-000ZB	*NH1*.....BLACK	1	1	1	-----	QKF,QKW1,QKW2,TDW1,TKW1,VAY,VYE3,VZE1,VZE8
	19610-Z6M-000ZA	*R280*.....POWER RED	1	-	1	-----	VXC,VXC2
	19610-Z6M-000ZB	*NH1*.....BLACK	1	-	1	-----	VXC,VXC2
3	19619-Z0A-300	COLLAR, FAN COVER	10	10	10		
4	19621-Z6L-000	PROTECTOR, FAN COVER	1	-	-	-----	QAFH,QKF,QKW1,QKW2,QWF,QZK,SAE1,VAY,VEPH,VXAH,VXC,VXC2,VYE3,VZE1 VZE8
5	19631-Z6L-000	SHROUD, UPPER	1	1	1		
6	19641-Z6L-000	SHROUD, R. LOWER	1	1	1		
7	19642-Z6L-000	SHROUD, L. LOWER	1	-	-	-----	QAFH,QKF,QKW1,QKW2,QWF,QZK,SAE1,VAY,VEPH,VXAH,VXC,VXC2,VYE3,VZE1 VZE8
	19642-Z6L-800	1	-	1	-----	QWD
8	84601-HA7-670	NUT, FENDER SETTING	2	2	2		
9	90005-Z6L-000	SCREW, SPECIAL, 4X10	4	-	-	-----	QAFH,QKF,QKW1,QKW2,QWF,QZK,SAE1,VAY,VEPH,VXAH,VXC,VXC2,VYE3,VZE1 VZE8
10	90380-GM9-740	SCREW, SPECIAL, 6X15	2	4	4		
11	93913-25580	SCREW, TAPPING, 5X20	2	2	2		
12	95701-06016-00	BOLT, FLANGE, 6X16	3	3	3		
13	95701-06020-00	BOLT, FLANGE, 6X20	10	10	10		

2

E-14

CARBURETOR(1)

C12



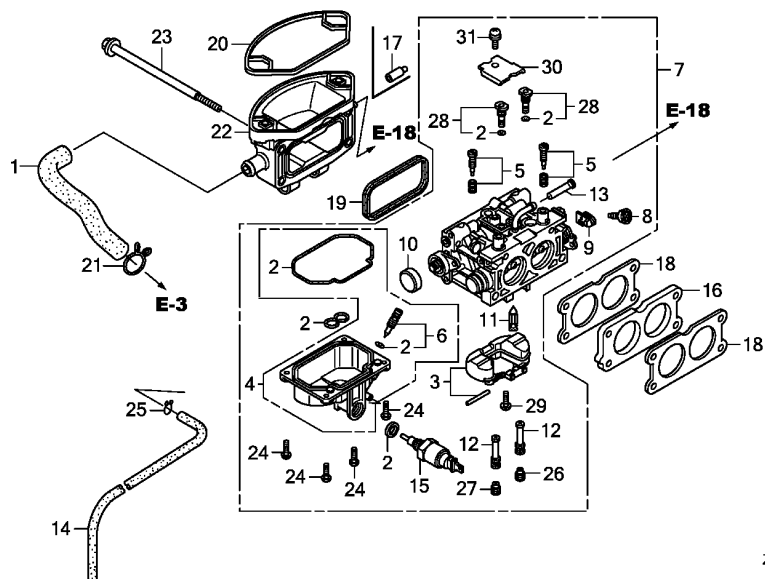
Z6N0E1400

Ref. No.	L.O.N.	(Relative ref. Number) Description	F.R.T.
----------	--------	------------------------------------	--------

Ref. No.	Part No.	Description	Reqd. QTY			Serial No.	Parts catalogue code
			GX 630	GX 660	GX 690		
1	15721-Z6L-000	TUBE, BREATHER	1	-	1	-----	BAFH,QAFH,QKF,QKW1,QKW2,QWD,QWF,QZK,SAE1,TAFH,TAF5,TDW1,TKW1,TFX3 VAY,VEPH,VXAH,VXEH,VYE3,VZE1,VZE8
2	16010-Z6L-003	GASKET SET	1	-	1	-----	BAFH,QAFH,QKF,QKW1,QKW2,QWD,QWF,QZK,SAE1,TAFH,TAF5,TDW1,TKW1,TFX3 VAY,VEPH,VXAH,VXEH,VYE3,VZE1,VZE8
3	16013-Z6L-003	FLOAT SET	1	-	1	-----	BAFH,QAFH,QKF,QKW1,QKW2,QWD,QWF,QZK,SAE1,TAFH,TAF5,TDW1,TKW1,TFX3 VAY,VEPH,VXAH,VXEH,VYE3,VZE1,VZE8
4	16015-Z6L-003	CHAMBER SET, FLOAT	1	-	1	-----	BAFH,QAFH,QKF,QKW1,QKW2,QWD,QWF,QZK,SAE1,TAFH,TAF5,TDW1,TKW1,TFX3 VAY,VEPH,VXAH,VXEH,VYE3,VZE1,VZE8
5	16016-Z6L-003	SCREW SET	2	-	2	-----	BAFH,QAFH,QKF,QKW1,QKW2,QWD,QWF,QZK,SAE1,TAFH,TAF5,TDW1,TKW1,TFX3 VAY,VEPH,VXAH,VXEH,VYE3,VZE1,VZE8
6	16024-124-760	SCREW SET, DRAIN	1	-	1	-----	BAFH,QAFH,QKF,QKW1,QKW2,QWD,QWF,QZK,SAE1,TAFH,TAF5,TDW1,TKW1,TFX3 VAY,VEPH,VXAH,VXEH,VYE3,VZE1,VZE8
7	16100-Z9E-003	CARBURETOR ASSY. (BK07A A) ..	1	-	-	-----	QAFH,QKF,QKW1,QKW2,QWD,QWF,QZK,SAE1,VAY,VEPH,VXAH,VYE3,VZE1,VZE8
	16100-Z8N-003	CARBURETOR ASSY. (BK06A A) ..	-	-	-	-----	BAFH,TAFH,TAF5,TDW1,TKW1,TFX3,VAY
	16100-Z6L-003	CARBURETOR ASSY. (BK05A A) ..	-	-	1	-----	BAFH,TAFH,TAF5,TDW1,TKW1,TFX3,VAY,VYE3
	16100-Z8N-851	CARBURETOR ASSY. (BK06E A) ..	-	-	1	-----	VXEH
	16100-Z6L-851	CARBURETOR ASSY. (BK05D A) ..	-	-	1	-----	VXEH
8	16124-ZE0-005	SCREW, THROTTLE STOP	1	-	1	-----	BAFH,QAFH,QKF,QKW1,QKW2,QWD,QWF,QZK,SAE1,TAFH,TAF5,TDW1,TKW1,TFX3 VAY,VEPH,VXAH,VXEH,VYE3,VZE1,VZE8
			-	1	-		

Ref. No.	Part No.	Description	Reqd. QTY			Serial No.	Parts catalogue code
			GX 630	GX 660	GX 690		
9	16126-Z6L-003	ARM, THROTTLE LINKAGE	1	-	1	-----	BAFH,QAFH,QKF,QKW1,QKW2,QWD,QWF,QZK,SAE1,TAFH,TAF5,TDW1,TKW1,TFX3 VAY,VEPH,VXAH,VXEH,VYE3,VZE1,VZE8
10	16148-141-881	CAP, CHOKE DUST	1	-	1	-----	BAFH,QAFH,QKF,QKW1,QKW2,QWD,QWF,QZK,SAE1,TAFH,TAF5,TDW1,TKW1,TFX3 VAY,VEPH,VXAH,VXEH,VYE3,VZE1,VZE8
11	16155-Z6L-003	VALVE COMP., FLOAT	1	-	1	-----	BAFH,QAFH,QKF,QKW1,QKW2,QWD,QWF,QZK,SAE1,TAFH,TAF5,TDW1,TKW1,TFX3 VAY,VEPH,VXAH,VXEH,VYE3,VZE1,VZE8
12	16166-Z8N-003	NOZZLE, MAIN	2	-	-	-----	QAFH,QKF,QKW1,QKW2,QWD,QWF,QZK,SAE1,VAY,VEPH,VXAH,VYE3,VZE1,VZE8
	16166-Z6L-003	-	-	2	-----	BAFH,TAFH,TAF5,TDW1,TKW1,TFX3,VAY,VXEH,VYE3
13	16176-Z2G-D51	SCREEN, FUEL STRAINER	1	-	1	-----	BAFH,QAFH,QKF,QKW1,QKW2,QWD,QWF,QZK,SAE1,TAFH,TAF5,TDW1,TKW1,TFX3 VAY,VEPH,VXAH,VXEH,VYE3,VZE1,VZE8
14	16198-Z6L-000	TUBE, DRAIN	1	-	1	-----	BAFH,QAFH,QKF,QKW1,QKW2,QWF,QZK,SAE1,TAFH,TAF5,TDW1,TKW1,TFX3,VAY VEPH,VXAH,VXEH,VYE3,VZE1,VZE8
			1	-	-	-----	1000098 QWD
	16198-ZJ1-840	1	-	-	-----	1000099 QWD
15	16200-Z6L-003	VALVE ASSY., SOLENOID	1	-	1	-----	BAFH,QAFH,QKF,QKW1,QKW2,QWD,QWF,QZK,SAE1,TAFH,TAF5,TDW1,TKW1,TFX3 VAY,VEPH,VXAH,VXEH,VYE3,VZE1,VZE8
16	16211-Z6L-000	INSULATOR, CARBURETOR	1	-	1	-----	BAFH,QAFH,QKF,QKW1,QKW2,QWD,QWF,QZK,SAE1,TAFH,TAF5,TDW1,TKW1,TFX3 VAY,VEPH,VXAH,VXEH,VYE3,VZE1,VZE8
17	16215-MV4-000	CAP, BOOST	-	1	1	-----	TAF5
18	16221-Z6L-000	PACKING, CARBURETOR	2	-	2	-----	BAFH,QAFH,QKF,QKW1,QKW2,QWD,QWF,QZK,SAE1,TAFH,TAF5,TDW1,TKW1,TFX3 VAY,VEPH,VXAH,VXEH,VYE3,VZE1,VZE8
19	17228-Z6L-000	PACKING, AIR CLEANER	1	-	1	-----	BAFH,QAFH,QKF,QKW1,QKW2,QWD,QWF,QZK,SAE1,TAFH,TAF5,TDW1,TKW1,TFX3 VAY,VEPH,VXAH,VXEH,VYE3,VZE1,VZE8
20	17229-Z6L-000	SEAL, AIR CLEANER CASE	1	-	1	-----	BAFH,QAFH,QKF,QKW1,QKW2,QWD,QWF,QZK,SAE1,TAFH,TAF5,TDW1,TKW1,TFX3 VAY,VEPH,VXAH,VXEH,VYE3,VZE1,VZE8
21	17369-KB4-670	CLIP, BREATHER TUBE	1	-	1	-----	BAFH,QAFH,QKF,QKW1,QKW2,QWD,QWF,QZK,SAE1,TAFH,TAF5,TDW1,TKW1,TFX3 VAY,VEPH,VXAH,VXEH,VYE3,VZE1,VZE8
22	17410-Z6L-000	ELBOW COMP., AIR CLEANER	1	-	1	-----	BAFH,QAFH,QKF,QKW1,QKW2,QWD,QWF,QZK,SAE1,TAFH,TAF5,TDW1,TKW1,TFX3 VAY,VEPH,VXAH,VXEH,VYE3,VZE1,VZE8
23	90003-Z6L-000	BOLT, FLANGE, 6X106	4	-	4	-----	BAFH,QAFH,QKF,QKW1,QKW2,QWD,QWF,QZK,SAE1,TAFH,TAF5,TDW1,TKW1,TFX3 VAY,VEPH,VXAH,VXEH,VYE3,VZE1,VZE8
24	93500-04012-1H	SCREW, PAN, 4X12	4	-	4	-----	BAFH,QAFH,QKF,QKW1,QKW2,QWD,QWF,QZK,SAE1,TAFH,TAF5,TDW1,TKW1,TFX3 VAY,VEPH,VXAH,VXEH,VYE3,VZE1,VZE8
25	95002-02080	CLIP, TUBE (B8)	1	-	1	-----	BAFH,QAFH,QKF,QKW1,QKW2,QWD,QWF,QZK,SAE1,TAFH,TAF5,TDW1,TKW1,TFX3 VAY,VEPH,VXAH,VXEH,VYE3,VZE1,VZE8
26	99101-ZH8-0900	JET, MAIN, #90	(1)	-	-	-----	QAFH,QKF,QKW1,QKW2,QWD,QWF,QZK,SAE1,VAY,VEPH,VXAH,VYE3,VZE1,VZE8
	99101-ZH8-0950	JET, MAIN, #95	(1)	-	-	-----	QAFH,QKF,QKW1,QKW2,QWD,QWF,QZK,SAE1,VAY,VEPH,VXAH,VYE3,VZE1,VZE8
	99101-ZH8-1000	JET, MAIN, #100	-	(1)	-	-----	





Z6N0E1400

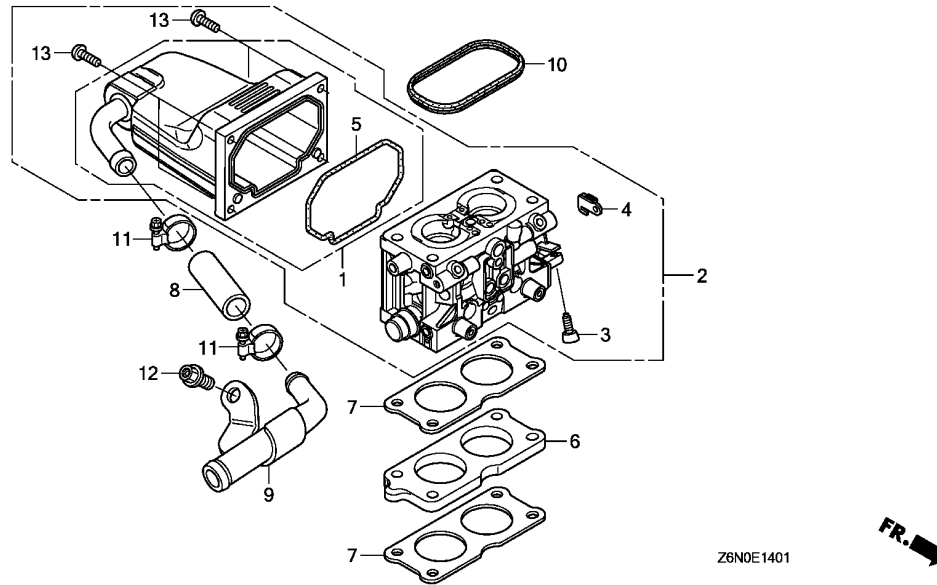


Ref. No.	Part No.	Description	Reqd. QTY			Serial No.	Parts catalogue code
			GX 630	GX 660	GX 690		
26)	99101-ZH8-1020	JET, MAIN, #102	1	-	-	-----	QAFH,QKF,QKW1,QKW2,QWD,QWF,QZK,SAE1,VAY,VEPH,VXAH,VYE3,VZE1,VZE8
	99101-ZH8-1050	JET, MAIN, #105	-	(1)	-	-----	BAFH,TAFH,TAF5,TDW1,TKW1,TFX3,VAY,VXEH,VYE3
	99101-ZH8-1100	JET, MAIN, #110	-	-	(1)	-----	BAFH,TAFH,TAF5,TDW1,TKW1,TFX3,VAY,VXEH,VYE3
	99101-ZH8-1120	JET, MAIN, #112	-	1	-	-----	BAFH,TAFH,TAF5,TDW1,TKW1,TFX3,VAY,VXEH,VYE3
	99101-ZH8-1180	JET, MAIN, #118	-	-	1	-----	BAFH,TAFH,TAF5,TDW1,TKW1,TFX3,VAY,VXEH,VYE3
27	99101-ZH8-0920	JET, MAIN, #92	(1)	-	-	-----	QAFH,QKF,QKW1,QKW2,QWD,QWF,QZK,SAE1,VAY,VEPH,VXAH,VYE3,VZE1,VZE8
	99101-ZH8-0980	JET, MAIN, #98	(1)	-	-	-----	QAFH,QKF,QKW1,QKW2,QWD,QWF,QZK,SAE1,VAY,VEPH,VXAH,VYE3,VZE1,VZE8
	99101-ZH8-1000	JET, MAIN, #100	-	(1)	-	-----	BAFH,QAFH,QKF,QKW1,QKW2,QWD,QWF,QZK,SAE1,TAFH,TAF5,TDW1,TKW1,TFX3
	99101-ZH8-1050	JET, MAIN, #105	1	-	(1)	-----	VAY,VEPH,VXAH,VXEH,VYE3,VZE1,VZE8
	99101-ZH8-1100	JET, MAIN, #110	-	(1)	-	-----	BAFH,TAFH,TAF5,TDW1,TKW1,TFX3,VAY,VXEH,VYE3
	99101-ZH8-1120	JET, MAIN, #112	-	1	-	-----	BAFH,TAFH,TAF5,TDW1,TKW1,TFX3,VAY,VXEH,VYE3
	99101-ZH8-1180	JET, MAIN, #118	-	-	1	-----	BAFH,TAFH,TAF5,TDW1,TKW1,TFX3,VAY,VXEH,VYE3
28	99204-ZE2-0400	JET SET, PILOT, #40	2	-	-	-----	QAFH,QKF,QKW1,QKW2,QWD,QWF,QZK,SAE1,VAY,VEPH,VXAH,VYE3,VZE1,VZE8
	99204-ZE2-0450	JET SET, PILOT, #45	-	-	2	-----	BAFH,TAFH,TAF5,TDW1,TKW1,TFX3,VAY,VXEH,VYE3
29	16081-Z6L-003	SCREW, FLOAT	1	-	1	-----	BAFH,QAFH,QKF,QKW1,QKW2,QWD,QWF,QZK,SAE1,TAFH,TAF5,TDW1,TKW1,TFX3
			-	1	-	-----	VAY,VEPH,VXAH,VXEH,VYE3,VZE1,VZE8
30	16113-Z6L-003	PLATE	1	-	1	-----	BAFH,QAFH,QKF,QKW1,QKW2,QWD,QWF,QZK,SAE1,TAFH,TAF5,TDW1,TKW1,TFX3
			-	1	-	-----	VAY,VEPH,VXAH,VXEH,VYE3,VZE1,VZE8
31	93892-05010-18	SCREW-WASHER, 5X10	1	-	1	-----	BAFH,QAFH,QKF,QKW1,QKW2,QWD,QWF,QZK,SAE1,TAFH,TAF5,TDW1,TKW1,TFX3
			-	1	-	-----	VAY,VEPH,VXAH,VXEH,VYE3,VZE1,VZE8

E-14-1

CARBURETOR(2)

C15



Ref. No.	L.O.N.	(Relative ref. Number) Description	F.R.T.
----------	--------	------------------------------------	--------

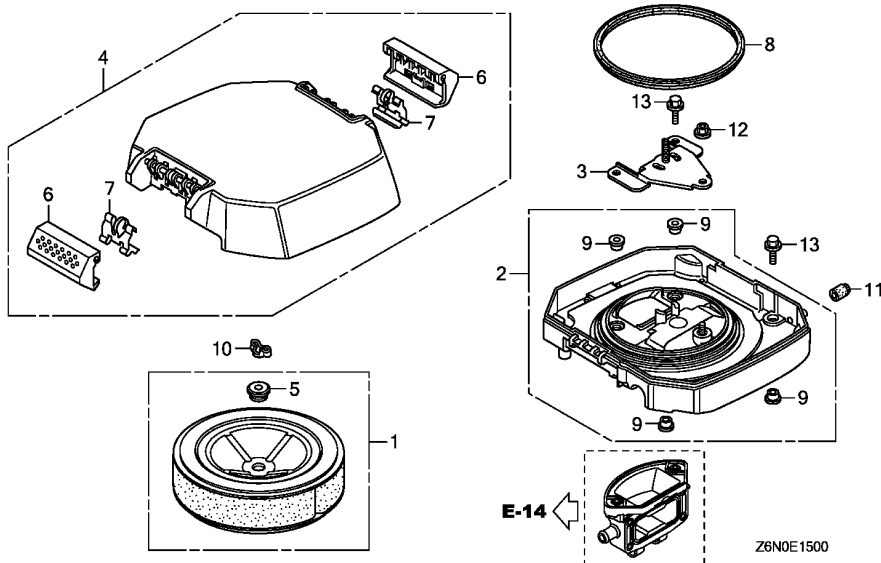
Ref. No.	Part No.	Description	Reqd. QTY			Serial No.	Parts catalogue code
			GX 630	GX 660	GX 690		
1	16015-Z6L-901	CHAMBER SET, FLOAT	1	-	1	-----	VXC,VXC2
2	16100-Z9E-901	CARBURETOR ASSY. (BKL2B A) ..	1	-	-	-----	VXC,VXC2
	16100-Z6L-901	CARBURETOR ASSY. (BKL2A A) ..	-	-	1	-----	VXC,VXC2
3	16124-ZE0-005	SCREW, THROTTLE STOP	1	-	1	-----	VXC,VXC2
4	16126-Z6L-003	ARM, THROTTLE LINKAGE	1	-	1	-----	VXC,VXC2
5	16163-Z6L-901	GASKET, FLOAT CHAMBER	1	-	1	-----	VXC,VXC2
6	16211-Z6L-000	INSULATOR, CARBURETOR	1	-	1	-----	VXC,VXC2
7	16221-Z6L-000	PACKING, CARBURETOR	2	-	2	-----	VXC,VXC2
8	16347-ZN1-820	HOSE, FUEL	1	-	1	-----	VXC,VXC2
9	16920-Z6L-900	JOINT COMP., FUEL	1	-	1	-----	VXC,VXC2
10	17228-Z6L-000	PACKING, AIR CLEANER	1	-	1	-----	VXC,VXC2
11	19505-KS6-700	CLAMP A, WATER HOSE	2	-	2	-----	VXC,VXC2
12	90649-SB0-671	BOLT, FLANGE, 8X16	1	-	1	-----	VXC,VXC2
13	93500-04014-1H	SCREW, PAN, 4X14	4	-	4	-----	VXC,VXC2

2

E-15

AIR CLEANER(1)

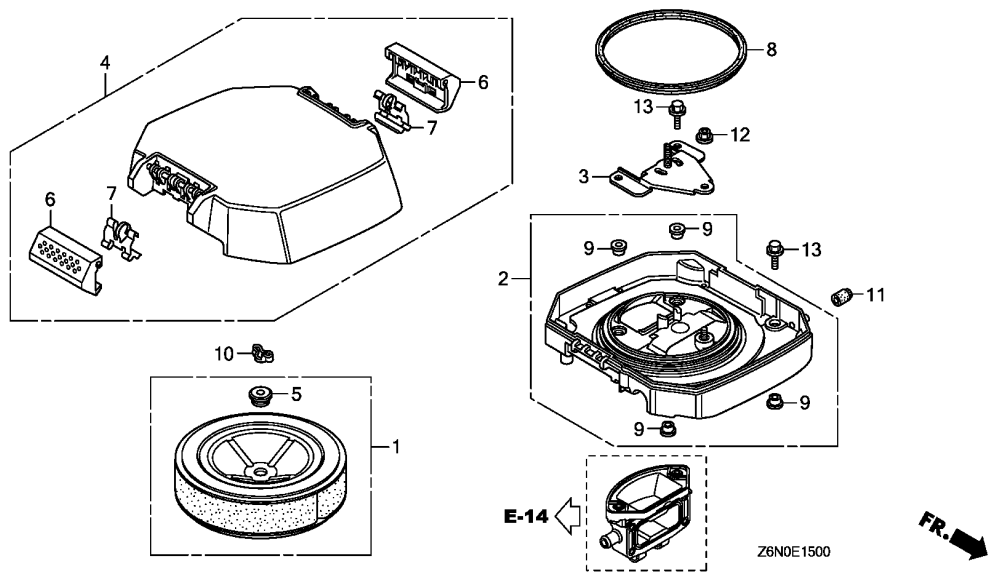
C16



Ref. L.O.N. (Relative ref. Number) F.R.T.
No. Description

Ref. No.	Part No.	Description	Reqd. QTY			Serial No.	Parts catalogue code
			GX 630	GX 660	GX 690		
1	17210-Z6L-010	ELEMENT COMP., AIR CLEANER ..	1	-	1	-----	BAFH,QAFH,QKF,QKW1,QKW2,QWD,QWF,QZK,SAE1,TAFH,TAF5,TDW1,TKW1,TFX3 VAY,VEPH,VXAH,VXEH,VYE3,VZE1,VZE8
2	17220-Z6L-000	CASE COMP., AIR CLEANER	-	1	-	-----	BAFH,QAFH,QKF,QKW1,QKW2,QWD,QWF,QZK,SAE1,TAFH,TAF5,TDW1,TKW1,TFX3 VAY,VEPH,VXAH,VXEH,VYE3,VZE1,VZE8
3	17223-Z6L-000	STAY COMP., AIR CLEANER ELEMENT	-	1	-	-----	BAFH,QAFH,QKF,QKW1,QKW2,QWD,QWF,QZK,SAE1,TAFH,TAF5,TDW1,TKW1,TFX3 VAY,VEPH,VXAH,VXEH,VYE3,VZE1,VZE8
4	17230-Z6L-000	COVER COMP., AIR CLEANER	-	1	-	-----	BAFH,QAFH,QKF,QKW1,QKW2,QWD,QWF,QZK,SAE1,TAFH,TAF5,TDW1,TKW1,TFX3 VAY,VEPH,VXAH,VXEH,VYE3,VZE1,VZE8
5	17232-Z2E-000	GROMMET, AIR CLEANER	1	-	1	-----	BAFH,QAFH,QKF,QKW1,QKW2,QWD,QWF,QZK,SAE1,TAFH,TAF5,TDW1,TKW1,TFX3 VAY,VEPH,VXAH,VXEH,VYE3,VZE1,VZE8
6	17235-Z6L-300	KNOB, AIR CLEANER COVER	-	1	-	-----	BAFH,QAFH,QKF,QKW1,QKW2,QWD,QWF,QZK,SAE1,TAFH,TAF5,TDW1,TKW1,TFX3 VAY,VEPH,VXAH,VXEH,VYE3,VZE1,VZE8
7	17236-Z6L-300	SPRING, AIR CLEANER CASE COVER	2	-	2	-----	BAFH,QAFH,QKF,QKW1,QKW2,QWD,QWF,QZK,SAE1,TAFH,TAF5,TDW1,TKW1,TFX3 VAY,VEPH,VXAH,VXEH,VYE3,VZE1,VZE8
8	17417-Z6L-000	PACKING, AIR CLEANER CASE ...	-	2	-	-----	BAFH,QAFH,QKF,QKW1,QKW2,QWD,QWF,QZK,SAE1,TAFH,TAF5,TDW1,TKW1,TFX3 VAY,VEPH,VXAH,VXEH,VYE3,VZE1,VZE8
9	19619-Z0A-300	COLLAR, FAN COVER	4	-	4	-----	BAFH,QAFH,QKF,QKW1,QKW2,QWD,QWF,QZK,SAE1,TAFH,TAF5,TDW1,TKW1,TFX3 VAY,VEPH,VXAH,VXEH,VYE3,VZE1,VZE8
			-	4	-		

2



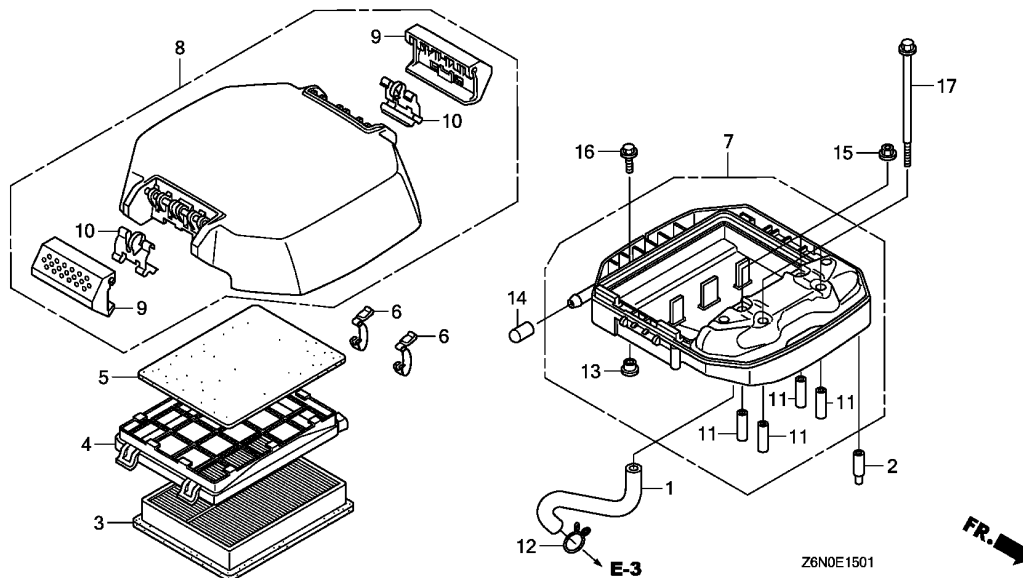
Ref. No.	Part No.	Description	Reqd. QTY			Serial No.	Parts catalogue code
			GX 630	GX 660	GX 690		
10	90325-044-000	NUT, TOOL BOX SETTING	1	-	1	-----	BAFH,QAFH,QKF,QKW1,QKW2,QWD,QWF,QZK,SAE1,TAFH,TAF5,TDW1,TKW1,TFX3 VAY,VEPH,VXAH,VXEH,VYE3,VZE1,VZE8
11	90802-Z6L-000	CAP, SEALING	1	-	1	-----	BAFH,QAFH,QKF,QKW1,QKW2,QWD,QWF,QZK,SAE1,TAFH,TAF5,TDW1,TKW1,TFX3 VAY,VEPH,VXAH,VXEH,VYE3,VZE1,VZE8
12	94050-06000	NUT, FLANGE, 6MM	1	-	1	-----	BAFH,QAFH,QKF,QKW1,QKW2,QWD,QWF,QZK,SAE1,TAFH,TAF5,TDW1,TKW1,TFX3 VAY,VEPH,VXAH,VXEH,VYE3,VZE1,VZE8
13	95701-06018-00	BOLT, FLANGE, 6X18	4	-	4	-----	BAFH,QAFH,QKF,QKW1,QKW2,QWD,QWF,QZK,SAE1,TAFH,TAF5,TDW1,TKW1,TFX3 VAY,VEPH,VXAH,VXEH,VYE3,VZE1,VZE8
			-	4	-		



E-15-1

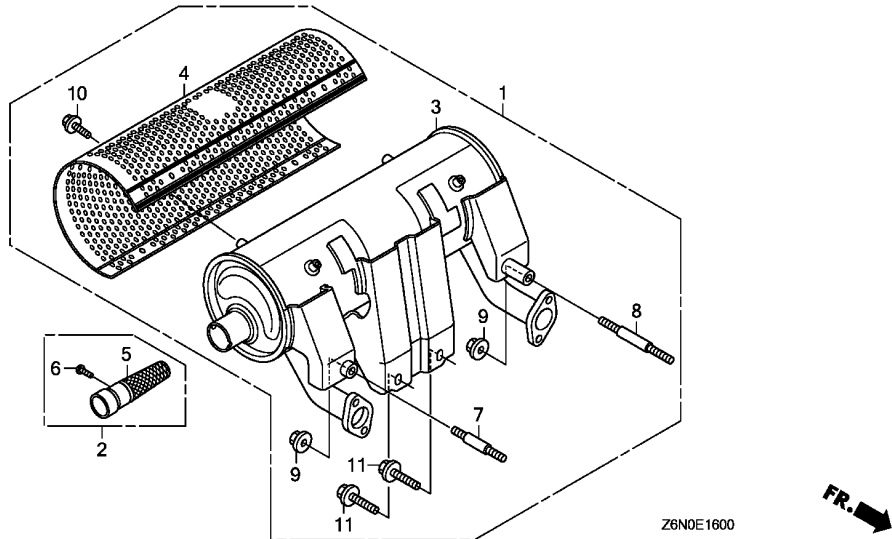
AIR CLEANER(2)

D 2



Ref. No.	L.O.N.	(Relative ref. Number) Description	F.R.T.
----------	--------	------------------------------------	--------

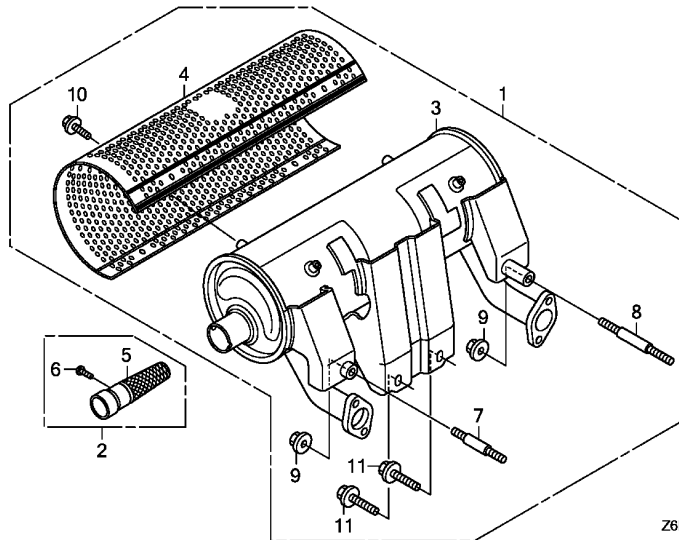
Ref. No.	Part No.	Description	Reqd. QTY			Serial No.	Parts catalogue code
			GX 630	GX 660	GX 690		
1	15721-Z6M-000	TUBE, BREATHER	1	-	1	-----	VXC,VXC2
2	16215-MV4-000	CAP, BOOST	1	-	1	-----	VXC,VXC2
3	17210-Z6L-900	ELEMENT COMP., AIR CLEANER ..	1	-	1	-----	VXC,VXC2
4	17214-Z6L-900	HOLDER, ELEMENT	1	-	1	-----	VXC,VXC2
5	17218-Z6M-000	FILTER, OUTER	1	-	1	-----	VXC,VXC2
6	17219-ZJ1-840	CLIP, AIR CLEANER	2	-	2	-----	VXC,VXC2
7	17220-Z6L-900	CASE COMP., AIR CLEANER	1	-	1	-----	VXC,VXC2
8	17230-Z6M-000	COVER COMP., AIR CLEANER	1	-	1	-----	VXC,VXC2
9	17235-Z6L-300	KNOB, AIR CLEANER COVER	2	-	2	-----	VXC,VXC2
10	17236-Z6L-300	SPRING, AIR CLEANER CASE COVER	2	-	2	-----	VXC,VXC2
11	17240-ZA0-951	COLLAR, AIR CLEANER	4	-	4	-----	VXC,VXC2
12	17369-KB4-670	CLIP, BREATHER TUBE	1	-	1	-----	VXC,VXC2
13	19619-Z0A-300	COLLAR, FAN COVER	1	-	1	-----	VXC,VXC2
14	90802-Z6L-000	CAP, SEALING	1	-	1	-----	VXC,VXC2
15	94050-06000	NUT, FLANGE, 6MM	2	-	2	-----	VXC,VXC2
16	95701-06016-00	BOLT, FLANGE, 6X16	1	-	1	-----	VXC,VXC2
17	95701-06110-00	BOLT, FLANGE, 6X110	2	-	2	-----	VXC,VXC2



Ref. L.O.N. (Relative ref. Number) F.R.T.
No. Description

Ref. No.	Part No.	Description	Reqd. QTY			Serial No.	Parts catalogue code
			GX 630	GX 660	GX 690		
1	06183-Z6L-010	MUFFLER KIT (HIGH-R)	(1)	(1)	(1)	-----	BAFH,QAFH,QKF,QKW1,QKW2,QZK,TAFH,TDW1,TKW1,VAY,VEPH,VXAH,VXC,VXC2 VXEH,VZE1,VZE8
2	06185-Z6L-000	ARRESTER KIT (HIGH)	(1)	(1)	(1)	-----	BAFH,QAFH,QKF,QKW1,QKW2,QZK,TAFH,TDW1,TKW1,VAY,VEPH,VXAH,VXC,VXC2 VXEH,VZE1,VZE8
3	18310-Z6L-003	MUFFLER COMP. (HIGH-R)	1	-	-	-----	QWF
			(1)	(1)	(1)	-----	BAFH,QAFH,QKF,QKW1,QKW2,QZK,TAFH,TDW1,TKW1,VAY,VEPH,VXAH,VXC,VXC2 VXEH,VZE1,VZE8
4	18321-ZJ1-010	PROTECTOR, MUFFLER (HIGH) (FUTABA)	1	-	-	-----	QWF
			(1)	(1)	(1)	-----	BAFH,QAFH,QKF,QKW1,QKW2,QZK,TAFH,TDW1,TKW1,VAY,VEPH,VXAH,VXC,VXC2 VXEH,VZE1,VZE8
5	18355-ZJ1-000	ARRESTER, SPARK	(1)	(1)	(1)	-----	BAFH,QAFH,QKF,QKW1,QKW2,QZK,TAFH,TDW1,TKW1,VAY,VEPH,VXAH,VXC,VXC2 VXEH,VZE1,VZE8
6	93901-250J0	SCREW, TAPPING, 5X8	(1)	(1)	(1)	-----	BAFH,QAFH,QKF,QKW1,QKW2,QZK,TAFH,TDW1,TKW1,VAY,VEPH,VXAH,VXC,VXC2 VXEH,VZE1,VZE8
7	92900-08045-0B	BOLT, STUD, 8X45	1	-	-	-----	QWF
			(1)	(1)	(1)	-----	BAFH,QAFH,QKF,QKW1,QKW2,QZK,TAFH,TDW1,TKW1,VAY,VEPH,VXAH,VXC,VXC2 VXEH,VZE1,VZE8
8	92900-08060-0B	BOLT, STUD, 8X60	1	-	-	-----	QWF
			(1)	(1)	(1)	-----	BAFH,QAFH,QKF,QKW1,QKW2,QZK,TAFH,TDW1,TKW1,VAY,VEPH,VXAH,VXC,VXC2 VXEH,VZE1,VZE8
9	94050-08000	NUT, FLANGE, 8MM	2	-	-	-----	QWF
			(2)	(2)	(2)	-----	BAFH,QAFH,QKF,QKW1,QKW2,QZK,TAFH,TDW1,TKW1,VAY,VEPH,VXAH,VXC,VXC2 VXEH,VZE1,VZE8
10	95701-06008-00	BOLT, FLANGE, 6X8	6	-	-	-----	QWF
			(6)	(6)	(6)	-----	BAFH,QAFH,QKF,QKW1,QKW2,QZK,TAFH,TDW1,TKW1,VAY,VEPH,VXAH,VXC,VXC2 VXEH,VZE1,VZE8





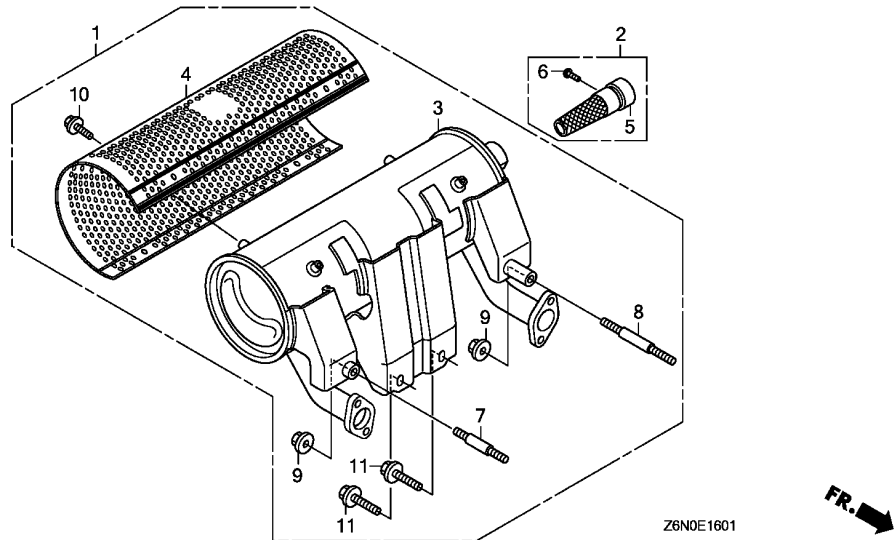
2

Ref. No.	Part No.	Description	Reqd. QTY			Serial No.	Parts catalogue code
			GX 630	GX 660	GX 690		
11	95701-08020-00	BOLT, FLANGE, 8X20	2	-	-	----- QWF	BAFH, QAFH, QKF, QKW1, QKW2, QZK, TAFH, TDW1, TKW1, VAY, VEPH, VXAH, VXC, VXC2, VXE, VZE1, VZE8
			(2)	(2)	(2)	-----	

E-16-1

MUFFLER(HIGH-L)

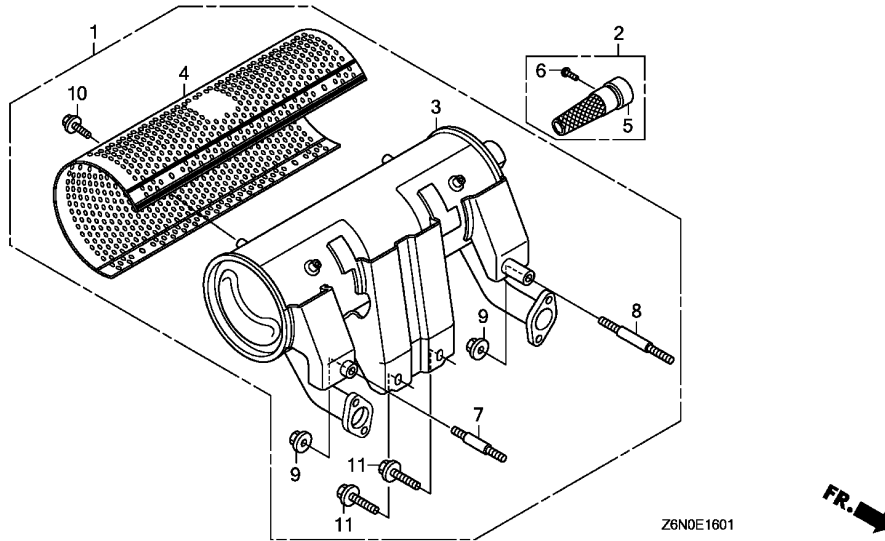
D 5



Ref. No.	L.O.N.	(Relative ref. Number)	Description	F.R.T.
----------	--------	------------------------	-------------	--------

Ref. No.	Part No.	Description	Reqd. QTY			Serial No.	Parts catalogue code
			GX 630	GX 660	GX 690		
1	06183-Z6L-801	MUFFLER KIT (HIGH-L)	(1)	(1)	(1)	-----	BAFH,QAFH,QKF,QKW1,QKW2,QZK,TAFH,TDW1,TKW1,VAY,VEPH,VXAH,VXC,VXC2 VXE8,VZE1,VZE8
2	06185-Z6L-000	ARRESTER KIT (HIGH)	(1)	(1)	(1)	-----	BAFH,QAFH,QKF,QKW1,QKW2,QZK,TAFH,TDW1,TKW1,VAY,VEPH,VXAH,VXC,VXC2 VXE8,VZE1,VZE8
3	18310-Z6L-801	MUFFLER COMP. (HIGH-L)	1 (1)	1 (1)	1 (1)	-----	SAE1,TAF5,TFX3,VYE3 BAFH,QAFH,QKF,QKW1,QKW2,QZK,TAFH,TDW1,TKW1,VAY,VEPH,VXAH,VXC,VXC2 VXE8,VZE1,VZE8
4	18321-ZJ1-010	PROTECTOR, MUFFLER (HIGH) (FUTABA)	1 (1)	1 (1)	1 (1)	-----	SAE1,TAF5,TFX3,VYE3 BAFH,QAFH,QKF,QKW1,QKW2,QZK,TAFH,TDW1,TKW1,VAY,VEPH,VXAH,VXC,VXC2 VXE8,VZE1,VZE8
5	18355-ZJ1-000	ARRESTER, SPARK	(1)	(1)	(1)	-----	BAFH,QAFH,QKF,QKW1,QKW2,QZK,TAFH,TDW1,TKW1,VAY,VEPH,VXAH,VXC,VXC2 VXE8,VZE1,VZE8
6	93901-250J0	SCREW, TAPPING, 5X8	(1)	(1)	(1)	-----	BAFH,QAFH,QKF,QKW1,QKW2,QZK,TAFH,TDW1,TKW1,VAY,VEPH,VXAH,VXC,VXC2 VXE8,VZE1,VZE8
7	92900-08045-0B	BOLT, STUD, 8X45	1 (1)	1 (1)	1 (1)	-----	SAE1,TAF5,TFX3,VYE3 BAFH,QAFH,QKF,QKW1,QKW2,QZK,TAFH,TDW1,TKW1,VAY,VEPH,VXAH,VXC,VXC2 VXE8,VZE1,VZE8
8	92900-08060-0B	BOLT, STUD, 8X60	1 (1)	1 (1)	1 (1)	-----	SAE1,TAF5,TFX3,VYE3 BAFH,QAFH,QKF,QKW1,QKW2,QZK,TAFH,TDW1,TKW1,VAY,VEPH,VXAH,VXC,VXC2 VXE8,VZE1,VZE8
9	94050-08000	NUT, FLANGE, 8MM	2 (2)	2 (2)	2 (2)	-----	SAE1,TAF5,TFX3,VYE3 BAFH,QAFH,QKF,QKW1,QKW2,QZK,TAFH,TDW1,TKW1,VAY,VEPH,VXAH,VXC,VXC2 VXE8,VZE1,VZE8
10	95701-06008-00	BOLT, FLANGE, 6X8	6 (6)	6 (6)	6 (6)	-----	SAE1,TAF5,TFX3,VYE3 BAFH,QAFH,QKF,QKW1,QKW2,QZK,TAFH,TDW1,TKW1,VAY,VEPH,VXAH,VXC,VXC2 VXE8,VZE1,VZE8

2



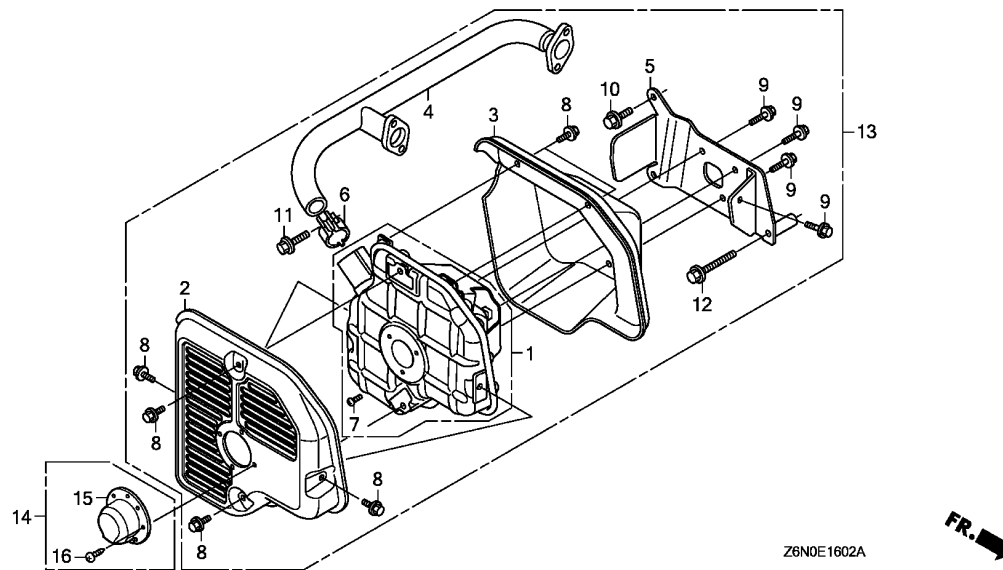
2

Ref. No.	Part No.	Description	Reqd. QTY			Serial No.	Parts catalogue code
			GX 630	GX 660	GX 690		
11	95701-08020-00	BOLT, FLANGE, 8X20	2	2	2	-----	SAE1,TAF5,TXF3,VYE3 BAFH,QAFH,QKF,QKW1,QKW2,QZK,TAFH,TDW1,TKW1,VAY,VEPH,VXAH,VXC,VXC2 VXEH,VZE1,VZE8

E-16-2

MUFFLER(SIDE MOUNT)

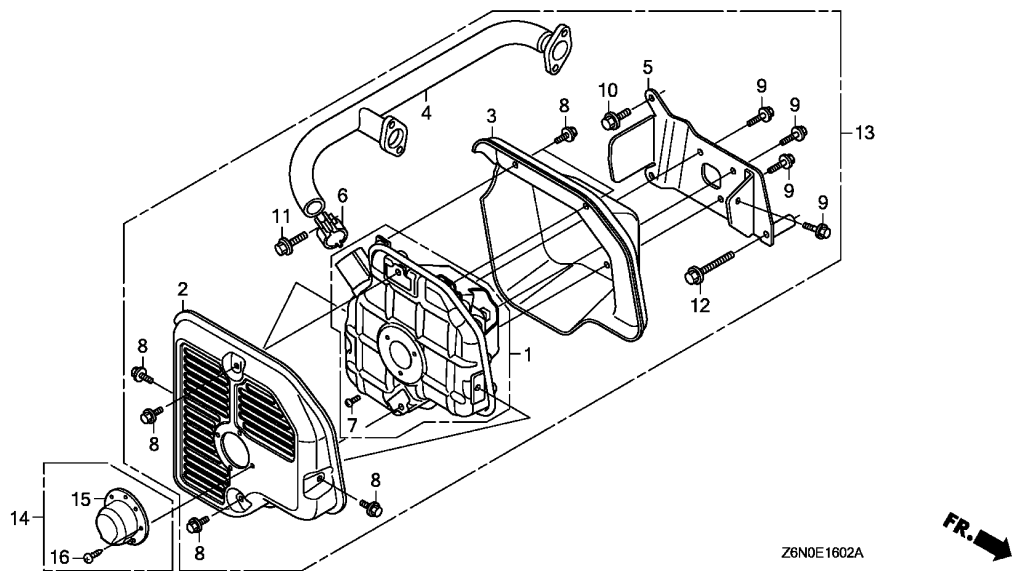
D 7



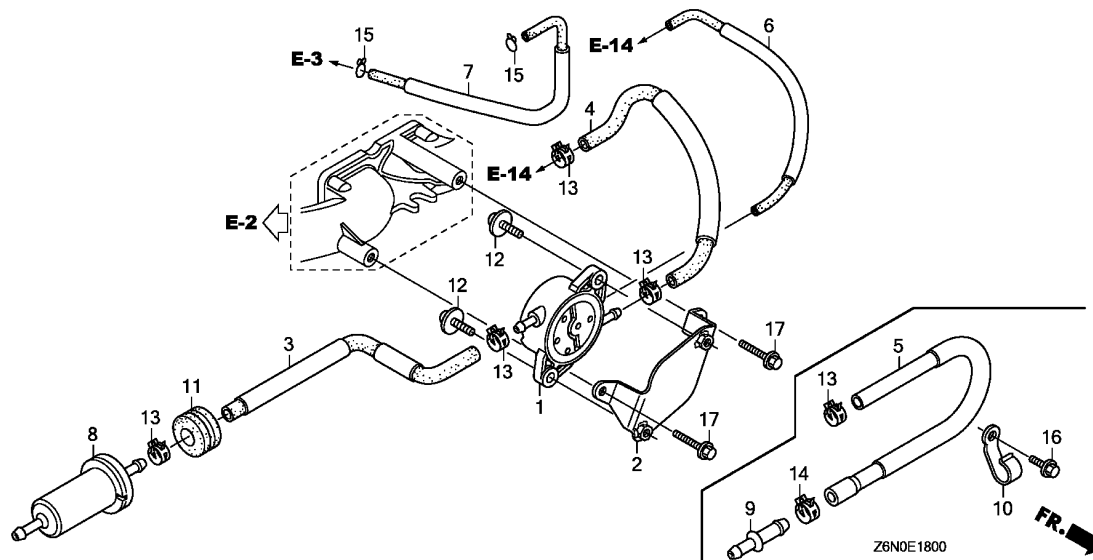
Ref. No.	L.O.N.	(Relative ref. Number) Description	F.R.T.
----------	--------	------------------------------------	--------

Ref. No.	Part No.	Description	Reqd. QTY			Serial No.	Parts catalogue code
			GX 630	GX 660	GX 690		
1	18310-Z6L-810	MUFFLER COMP.	1	-	-	----- QWD	
			(1)	-	-	----- VXAH	
2	18321-Z6L-801	PROTECTOR, MUFFLER (OUTSIDE)	1	-	-	----- QWD	
			(1)	-	-	----- VXAH	
3	18325-Z6L-800	PROTECTOR, MUFFLER (INSIDE)	1	-	-	----- 1000098 QWD	
			(1)	-	-	----- 1000098 VXAH	
	18325-Z6L-801	1	-	-	----- 1000099 QWD	
			(1)	-	-	----- 1000099 VXAH	
4	18330-Z6L-800	PIPE COMP., EX.	1	-	-	----- QWD	
			(1)	-	-	----- VXAH	
5	18338-Z6L-800	STAY, MUFFLER	1	-	-	----- QWD	
			(1)	-	-	----- VXAH	
6	18371-Z6L-000	BAND, MUFFLER	1	-	-	----- QWD	
			(1)	-	-	----- VXAH	
7	93500-04008-4J	SCREW, PAN, 4X8	3	-	-	----- QWD	
			(3)	-	-	----- VXAH	
8	95701-06008-00	BOLT, FLANGE, 6X8	6	-	-	----- QWD	
			(6)	-	-	----- VXAH	
9	95701-06012-00	BOLT, FLANGE, 6X12	4	-	-	----- QWD	
			(4)	-	-	----- VXAH	
10	95701-08020-00	BOLT, FLANGE, 8X20	2	-	-	----- QWD	
			(2)	-	-	----- VXAH	
11	95701-08030-00	BOLT, FLANGE, 8X30	1	-	-	----- QWD	
			(1)	-	-	----- VXAH	
12	95701-08060-00	BOLT, FLANGE, 8X60	1	-	-	----- QWD	
			(1)	-	-	----- VXAH	
13	06183-Z6L-811	MUFFLER KIT (SIDE)	(1)	-	-	----- VXAH	

2



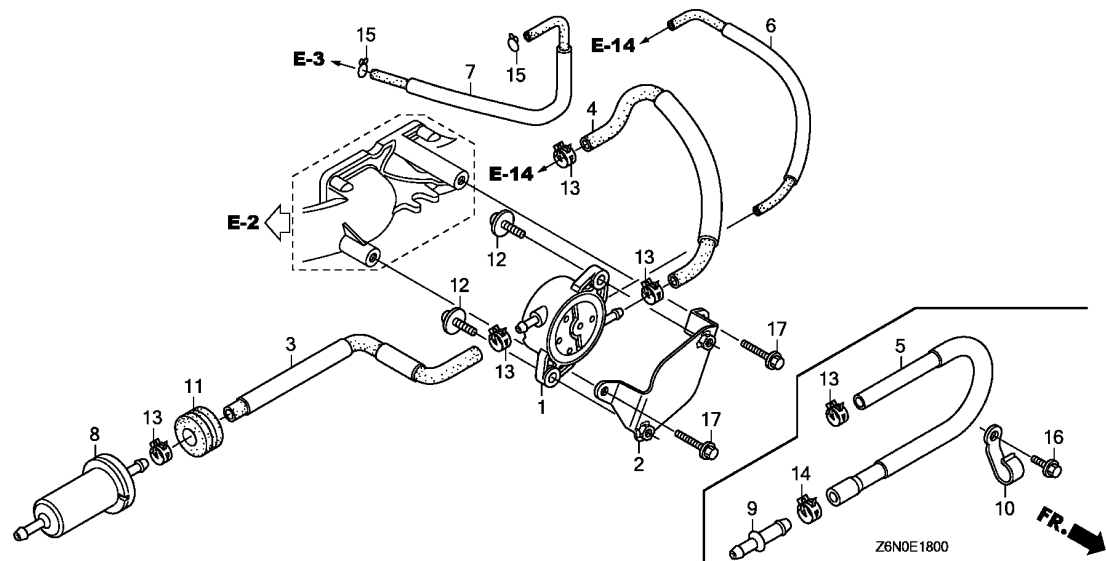
Ref. No.	Part No.	Description	Reqd. QTY			Serial No.	Parts catalogue code
			GX 630	GX 660	GX 690		
14	06184-Z6L-810	DEFLECTOR KIT. (SIDE)	(1)	-	-	-----	VXAH
15	18431-Z6L-000	DEFLECTOR, MUFFLER	(1)	-	-	-----	VXAH
16	90055-ZE1-000	SCREW, TAPPING, 4X6	(3)	-	-	-----	VXAH



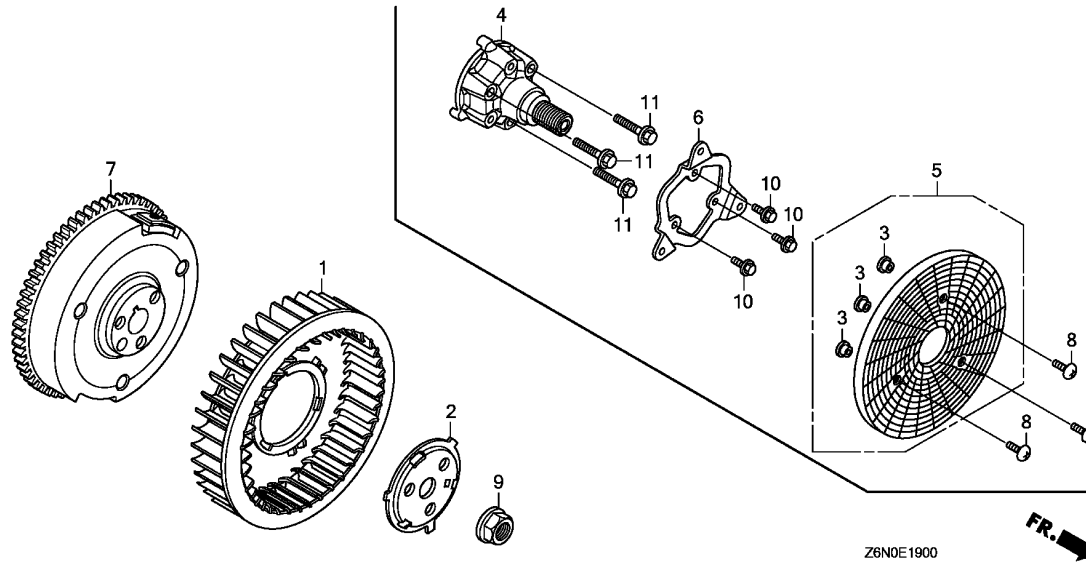
Ref. No.	L.O.N.	(Relative ref. Number) Description	F.R.T.
----------	--------	------------------------------------	--------

Ref. No.	Part No.	Description	Reqd. QTY			Serial No.	Parts catalogue code
			GX 630	GX 660	GX 690		
1	16700-Z6L-003	PUMP ASSY., FUEL	1	1	1	-----	BAFH,QAFH,QKF,QKW1,QKW2,QWD,QWF,QZK,SAE1,TAFH,TDW1,TKW1,TFX3,VAY VEPH,VXAH,VXEH,VYE3,VZE1,VZE8
2	16711-Z6L-000	STAY, FUEL PUMP	1	1	1	-----	BAFH,QAFH,QKF,QKW1,QKW2,QWD,QWF,QZK,SAE1,TAFH,TDW1,TKW1,TFX3,VAY VEPH,VXAH,VXEH,VYE3,VZE1,VZE8
3	16850-Z6L-000	TUBE COMP. A, FUEL (FKM)	1	-	1	-----	BAFH,QAFH,QKF,QKW1,QKW2,QWD,QWF,QZK,SAE1,TAFH,TAF5,TDW1,TKW1,TFX3 VAY,VEPH,VXAH,VXEH,VYE3,VZE1,VZE8
4	16860-Z6L-000	TUBE COMP. B, FUEL (FKM)	-	1	-	-----	BAFH,QAFH,QKF,QKW1,QKW2,QWD,QWF,QZK,SAE1,TAFH,TDW1,TKW1,TFX3,VAY VEPH,VXAH,VXEH,VYE3,VZE1,VZE8
5	16860-Z6L-800	TUBE COMP. B, FUEL (FKM)	1	1	1	-----	TAF5
6	16870-Z6L-000	TUBE, PURGE	1	1	1	-----	BAFH,QAFH,QKF,QKW1,QKW2,QWD,QWF,QZK,SAE1,TAFH,TDW1,TKW1,TFX3,VAY VEPH,VXAH,VXEH,VYE3,VZE1,VZE8
7	16882-Z6L-000	TUBE, DIAPHRAGM	1	1	1	-----	BAFH,QAFH,QKF,QKW1,QKW2,QWD,QWF,QZK,SAE1,TAFH,TDW1,TKW1,TFX3,VAY VEPH,VXAH,VXEH,VYE3,VZE1,VZE8
8	16910-Z6L-003	STRAINER COMP., FUEL	1	-	1	-----	BAFH,QAFH,QKF,QKW1,QKW2,QWD,QWF,QZK,SAE1,TAFH,TAF5,TDW1,TKW1,TFX3 VAY,VEPH,VXAH,VXEH,VYE3,VZE1,VZE8
9	17526-MCA-000	JOINT, FUEL RETURN	-	1	-	-----	TAF5
10	55109-GAA-000	CLAMP, OIL HOSE	-	1	1	-----	TAF5
11	80152-958-680	RUBBER, RR. FENDER	1	-	1	-----	BAFH,QAFH,QKF,QKW1,QKW2,QWD,QWF,QZK,SAE1,TAFH,TAF5,TDW1,TKW1,TFX3 VAY,VEPH,VXAH,VXEH,VYE3,VZE1,VZE8
12	93894-06016-00	SCREW-WASHER, 6X16	-	1	-	-----	BAFH,QAFH,QKF,QKW1,QKW2,QWD,QWF,QZK,SAE1,TAFH,TDW1,TKW1,TFX3,VAY VEPH,VXAH,VXEH,VYE3,VZE1,VZE8
13	95002-41000-08	CLAMP, TUBE (D10)	2	2	2	-----	BAFH,QAFH,QKF,QKW1,QKW2,QWD,QWF,QZK,SAE1,TAFH,TDW1,TKW1,TFX3,VAY VEPH,VXAH,VXEH,VYE3,VZE1,VZE8
			4	4	4	-----	BAFH,QAFH,QKF,QKW1,QKW2,QWD,QWF,QZK,SAE1,TAFH,TDW1,TKW1,TFX3,VAY VEPH,VXAH,VXEH,VYE3,VZE1,VZE8
			-	3	3	-----	TAF5





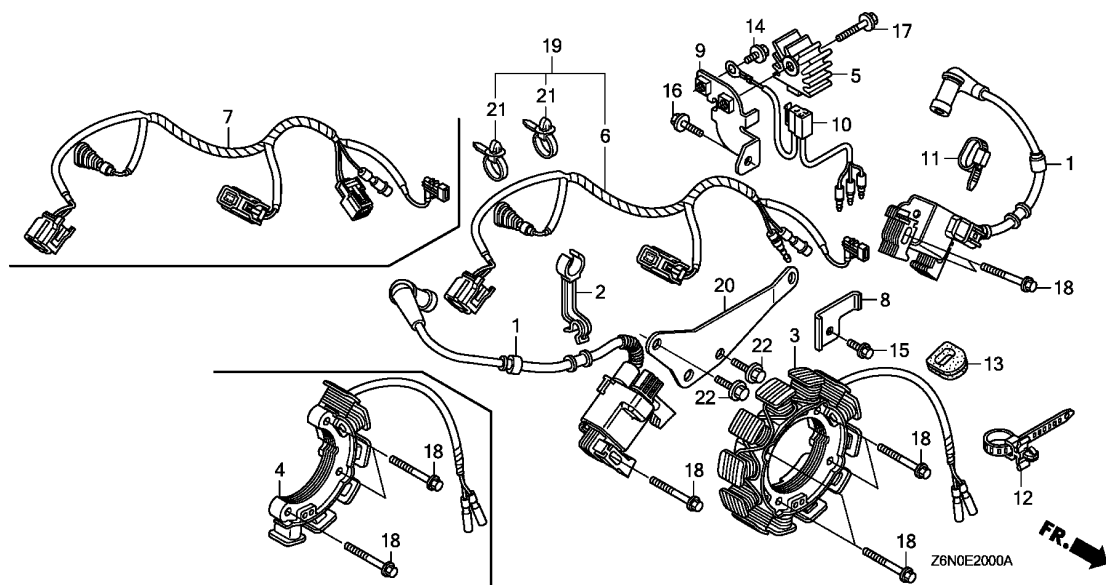
Ref. No.	Part No.	Description	Reqd. QTY			Serial No.	Parts catalogue code
			GX 630	GX 660	GX 690		
14	95002-41200-08	CLAMP, TUBE (D12)	-	1	1	-----	TAF5
15	95002-70000	CLIP, TUBE (C11)	2	2	2	-----	BAFH,QAFH,QKF,QKW1,QKW2,QWD,QWF,QZK,SAE1,TAFH,TDW1,TKW1,TFX3,VAY VEPH,VXAH,VXEH,VYE3,VZE1,VZE8
16	95701-06012-00	BOLT, FLANGE, 6X12	-	1	1	-----	TAF5
17	95701-06014-00	BOLT, FLANGE, 6X14	2	2	2	-----	BAFH,QAFH,QKF,QKW1,QKW2,QWD,QWF,QZK,SAE1,TAFH,TDW1,TKW1,TFX3,VAY VEPH,VXAH,VXEH,VYE3,VZE1,VZE8



Ref. No.	L.O.N. (Relative ref. Number)	Description	F.R.T.
----------	-------------------------------	-------------	--------

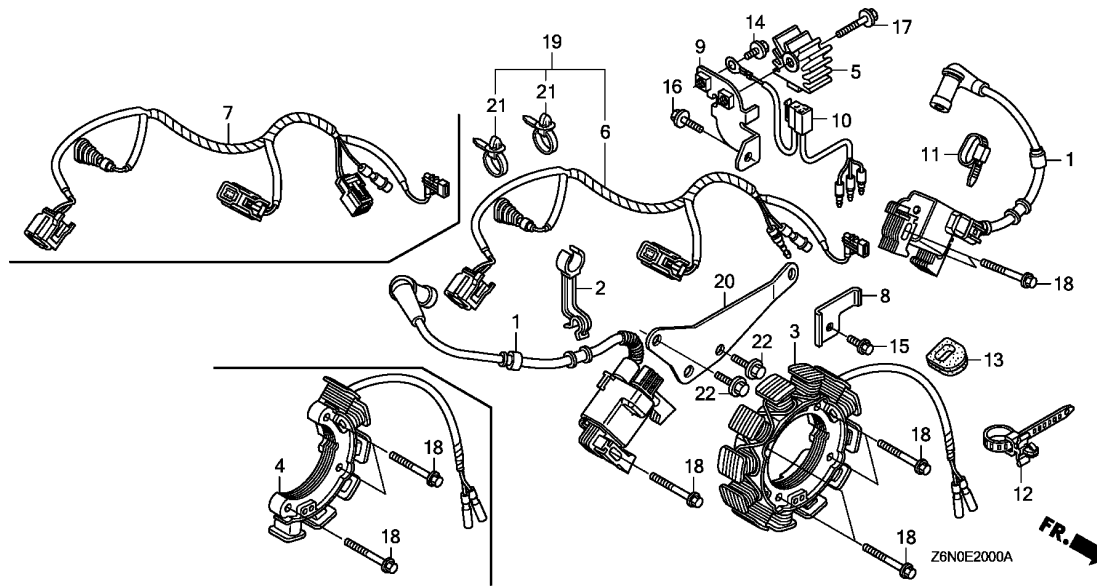
Ref. No.	Part No.	Description	Reqd. QTY			Serial No.	Parts catalogue code
			GX 630	GX 660	GX 690		
1	19511-Z6L-000	FAN, COOLING	1	1	1		
2	19513-Z6L-000	PLATE, COOLING FAN SETTING ..	1	1	1		
3	19619-Z0A-300	COLLAR, FAN COVER	3	-	-	-----	QWD
4	23311-Z6L-800	SHAFT, FR. P.T.O. (HS)	1	-	-	-----	QWD
5	28452-Z6L-810	GRID, SCREEN (P.T.O.)	1	-	-	-----	QWD
6	28454-Z6L-810	HOLDER, SCREEN GRID (P.T.O.) ..	1	-	-	-----	QWD
7	31110-Z6L-003	FLYWHEEL COMP.	1	1	1		
8	90131-S0X-A00	SCREW, TRUSS, 6X16	3	-	-	-----	QWD
9	90201-Z6L-000	NUT, SPECIAL (20MM)	1	1	1		
10	95701-06012-00	BOLT, FLANGE, 6X12	3	-	-	-----	QWD
11	95701-08050-00	BOLT, FLANGE, 8X50	3	-	-	-----	QWD





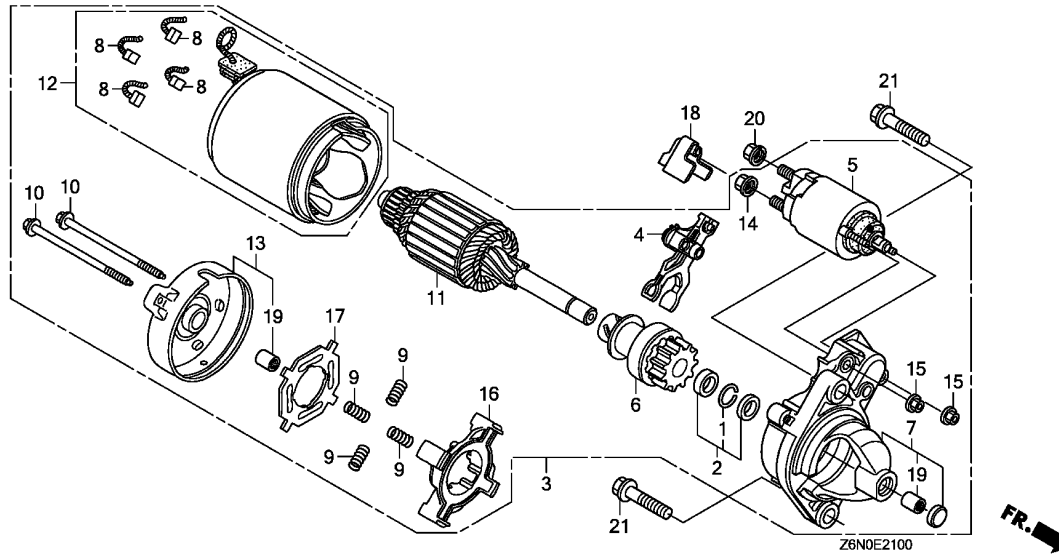
Ref. No.	L.O.N.	(Relative ref. Number)	Description	F.R.T.
----------	--------	------------------------	-------------	--------

Ref. No.	Part No.	Description	Reqd. QTY			Serial No.	Parts catalogue code
			GX 630	GX 660	GX 690		
1	30500-Z6L-003	COIL ASSY., IGNITION	2	2	2		
2	30551-Z6L-000	CLAMP, HIGH TENSION CORD	1	1	1		
3	31630-Z6L-003	COIL ASSY., CHARGE (17A)	1	1	1	-----	BAFH,QAFH,QKF,QKW2,QWD,QWF,TAFH,TAF5,TDW1
			-	1	1	-----	VAY
4	31630-Z6L-801	COIL ASSY., CHARGE (2.7A) ...	1	1	1	-----	QKW1,QZK,SAE1,TKW1,TFX3,VEPH,VXAH,VXC,VXC2,VXEH,VYE3,VZE1,VZE8
			1	-	-	-----	VAY
5	31750-735-013	RECTIFIER COMP., REGULATOR					
		(5A)	1	1	1	-----	QKW1,QZK,SAE1,TKW1,TFX3,VEPH,VXAH,VXEH,VZE1,VZE8
			1	-	-	-----	VAY
6	32110-Z6L-000	HARNESS ASSY., ENGINE WIRE ..	1	1	1	-----	QKF,QKW2,QWD,QWF,SAE1,TAF5,TDW1
	32110-Z6L-800	1	-	1	-----	VYE3,VZE8
7	32110-Z6L-810	HARNESS ASSY., ENGINE WIRE ..	1	1	1	-----	QZK,TFX3,VEPH,VXAH,VXEH,VZE1
	32110-Z6L-840	1	1	1	-----	BAFH,QAFH,TAFH
			-	1	1	-----	VAY
	32110-Z6L-850	1	1	1	-----	QKW1,TKW1
			1	-	-	-----	VAY
8	32114-Z6L-000	BRACKET, HARNESS	1	1	1		
9	32115-Z6L-000	BRACKET, REGULATOR RECTIFIER	1	1	1	-----	QKW1,QZK,TKW1,TFX3,VEPH,VXAH,VXEH,VZE1
			1	-	-	-----	VAY
			1	-	-	-----	1000001 SAE1
			1	-	-	-----	1000003 VZE8
10	32183-Z6L-000	HARNESS ASSY., REGULATOR					
		RECTIFIER	1	1	1	-----	QKW1,QZK,SAE1,TKW1,TFX3,VEPH,VXAH,VXEH,VZE1,VZE8
			1	-	-	-----	VAY
11	90650-KV6-003	BAND, WIRE, 95MM	1	1	1		
12	90672-SB2-003	STRAP, CABLE, 105MM(BLACK) ..	1	1	1	-----	QKF,QKW2,QWD,QWF,SAE1,TAF5,TDW1,VXC,VXC2,VYE3,VZE8
13	91601-Z6L-000	GROMMET, CORD	1	1	1		



Ref. No.	Part No.	Description	Reqd. QTY			Serial No.	Parts catalogue code
			GX 630	GX 660	GX 690		
14	95701-06008-00	BOLT, FLANGE, 6X8	1	1	1	----- QKW1,QZK,TKW1,TFX3,VEPH,VXAH,VXEH,VZE1	
			1	-	-	----- VAY	
			1	-	-	----- 1000001 SAE1	
			1	-	-	----- 1000003 VZE8	
15	95701-06012-00	BOLT, FLANGE, 6X12	1	1	1		
16	95701-06014-00	BOLT, FLANGE, 6X14	1	1	1	----- QKW1,QZK,TKW1,TFX3,VEPH,VXAH,VXEH,VZE1	
			1	-	-	----- VAY	
			1	-	-	----- 1000001 SAE1	
			1	-	-	----- 1000003 VZE8	
17	95701-06030-00	BOLT, FLANGE, 6X30	1	1	1	----- QKW1,QZK,TKW1,TFX3,VEPH,VXAH,VXEH,VZE1	
			1	-	-	----- VAY	
			1	-	-	----- 1000001 SAE1	
			1	-	-	----- 1000003 VZE8	
18	95701-06032-00	BOLT, FLANGE, 6X32	7	7	7	----- QKW1,QZK,SAE1,TKW1,TFX3,VEPH,VXAH,VXC,VXC2,VXEH,VYE3,VZE1,VZE8	
			7	8	8	----- VAY	
			8	8	8	----- BAFH,QKF,QKW2,QWD,QWF,TAFH,TAF5,TDW1	
			8	-	-	----- QAFH	
19	32110-Z6L-900	HARNESS ASSY., ENGINE WIRE ..	1	-	1	----- VXC2	
	32110-Z6L-910	1	-	1	----- VXC	
20	32114-Z6L-900	BRACKET, HARNESS	1	-	1	----- VXC,VXC2	
21	91541-S0A-003	CLIP, HARNESS BAND (BLACK) (145MM)	2	-	2	----- VXC,VXC2	
22	95701-06014-00	BOLT, FLANGE, 6X14	2	-	2	----- VXC,VXC2	

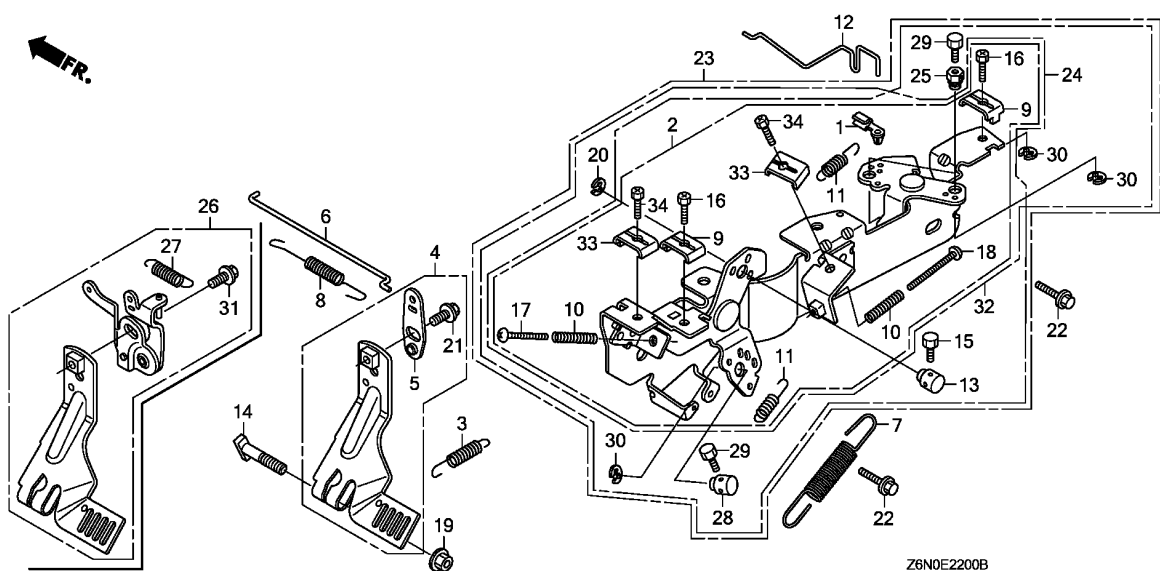




Ref. No.	L.O.N. (Relative ref. Number)	Description	F.R.T.
----------	-------------------------------	-------------	--------

2

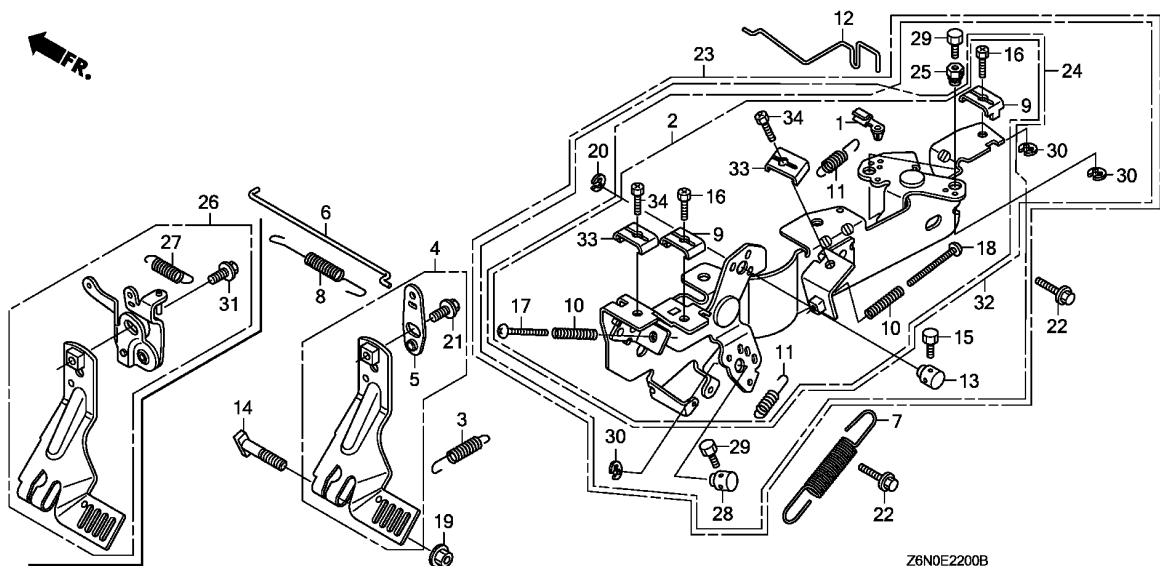
Ref. No.	Part No.	Description	Reqd. QTY			Serial No.	Parts catalogue code
			GX 630	GX 660	GX 690		
1	30201-PH9-004	RING, SNAP (DENSO)	1	1	1		
2	30202-PZ1-003	COLLAR SET, CLUTCH STOP	1	1	1		
3	31200-Z6L-003	MOTOR ASSY., STARTER	1	1	1		
4	31203-PH9-004	LEVER, PINION DRIVE	1	1	1		
5	31204-ZJ1-H02	SWITCH ASSY., MAGNET	1	1	1		
6	31207-ZE9-H01	CLUTCH COMP., OVERRUNNING ...	1	1	1		
7	31208-Z6L-003	HOUSING COMP., DRIVE SIDE ...	1	1	1		
8	31211-PH9-004	BRUSH	4	4	4		
9	31212-PH9-004	SPRING, BRUSH	4	4	4		
10	31214-PH9-004	BOLT, THROUGH	2	2	2		
11	31217-Z0A-003	ARMATURE COMP.	1	1	1		
12	31218-P64-N01	YOKE COMP.	1	1	1		
13	31219-Z6L-003	FRAME COMP., COMMUTATOR END ..	1	1	1		
14	31220-PH9-004	NUT, HEX., 8MM	1	1	1		
15	31223-PA0-006	NUT, HEX.	2	2	2		
16	31231-PH9-004	HOLDER, BRUSH	1	1	1		
17	31233-PH9-004	INSULATOR, BRUSH HOLDER	1	1	1		
18	31234-Z6L-000	COVER, TERMINAL	1	1	1		
19	91002-ZG4-801	BEARING A	2	2	2		
20	94070-08080	NUT-WASHER, 8MM	1	1	1		
21	95701-10040-00	BOLT, FLANGE, 10X40	2	2	2		



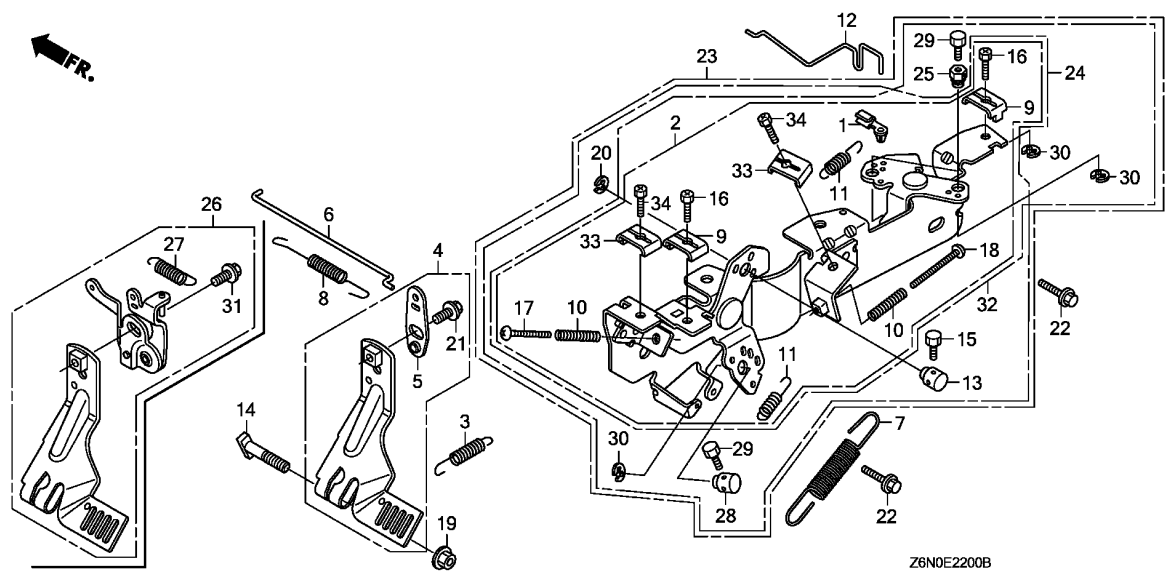
Ref. No.	L.O.N.	(Relative ref. Number) Description	F.R.T.
----------	--------	------------------------------------	--------

Ref. No.	Part No.	Description	Reqd. QTY			Serial No.	Parts catalogue code
			GX 630	GX 660	GX 690		
1	16263-Z0G-010	JOINT, ROD	1	1	1		
2	16500-Z6L-000	CONTROL ASSY.	1	-	-	1000254	VYE3
	16500-Z6L-010		1	-	-	1000255	TAF5, TXF3, VAY, VYE3
	16500-Z6L-800		-	1	-		VYE3
	16500-Z6L-801		-	-	1	1000090	VXEH
	16500-Z6L-801		1	-	1		VXEH
	16500-Z6L-801		-	-	1	1000091	VXC, VXC2
	16500-Z6L-801		-	-	1		VXEH
3	16534-Z6L-000	SPRING, STARTER	1	1	1		
4	16550-Z6L-000	ARM COMP., GOVERNOR	1	1	1		BAFH, QAFH, QKF, QKW1, QKW2, QWD, QWF, QZK, SAE1, TAFH, TAF5, TDW1, TKW1, TXF3
	16550-Z6L-010		1	-	1		VAY, VEPH, VXAH, VYE3, VZE1, VZE8
	16550-Z6L-010		1	-	1		VXC, VXC2
5	16553-Z6L-000	ARM, SUB	1	-	-		
	16553-Z6L-000		-	1	1		BAFH, TAFH, TAF5, TDW1, TKW1, TXF3, VAY, VXC, VXC2, VYE3
6	16555-Z6L-000	ROD, GOVERNOR	1	-	1		BAFH, QAFH, QKF, QKW1, QKW2, QWD, QWF, QZK, SAE1, TAFH, TAF5, TDW1, TKW1, TXF3
	16555-Z6L-000		-	1	-		VAY, VEPH, VXAH, VXEH, VYE3, VZE1, VZE8
	16555-Z6M-000		1	-	1		VXC, VXC2
7	16561-Z6L-000	SPRING, GOVERNOR	1	1	1		
8	16562-Z6L-000	SPRING, THROTTLE RETURN	1	-	1		BAFH, QAFH, QKF, QKW1, QKW2, QWD, QWF, QZK, SAE1, TAFH, TAF5, TDW1, TKW1, TXF3
	16562-Z6L-000		-	1	-		VAY, VEPH, VXAH, VXEH, VYE3, VZE1, VZE8
	16562-Z6M-000		1	-	1		VXC, VXC2
9	16576-891-000	HOLDER, CABLE	2	2	2		
10	16584-883-300	SPRING, CONTROL ADJUSTING	1	1	1		VXC, VXC2, VXEH, VZE8
	16584-883-300		2	2	2		BAFH, QAFH, QKF, QKW1, QKW2, QWD, QWF, QZK, SAE1, TAFH, TAF5, TDW1, TKW1, TXF3
	16584-883-300		2	2	2		VAY, VEPH, VXAH, VYE3, VZE1



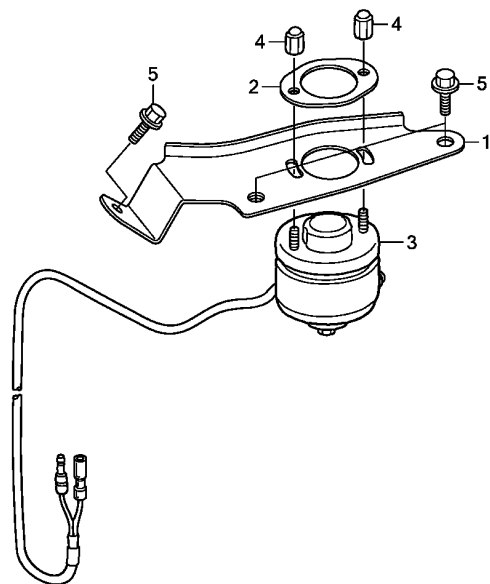


Ref. No.	Part No.	Description	Reqd. QTY			Serial No.	Parts catalogue code
			GX 630	GX 660	GX 690		
11	16592-ZJ1-000	SPRING, CABLE RETURN	2	2	2		
12	16611-Z6L-000	ROD, CHOKE CONTROL	1	-	1	-----	BAFH, QAFH, QKF, QKW1, QKW2, QWD, QWF, QZK, SAE1, TAFH, TAF5, TDW1, TKW1, TXF3 VAY, VEPH, VXAH, VXE3, VZE1, VZE8
13	16617-Z6L-000	HOLDER, CABLE	1	1	1	-----	BAFH, QAFH, QKF, QKW1, QKW2, QWD, QWF, QZK, SAE1, TAFH, TDW1, TKW1, VEPH, VXAH VZE1
14	90015-ZE3-790	BOLT, GOVERNOR ARM	1	-	-	-----	VAY
15	92301-04006-0H	BOLT, RECESSED, 4X6	1	1	1	-----	BAFH, QAFH, QKF, QKW1, QKW2, QWD, QWF, QZK, SAE1, TAFH, TDW1, TKW1, VEPH, VXAH VZE1
			1	-	-	-----	VAY
16	92301-05016-0A	BOLT, RECESSED, 5X16	2	2	2		
17	93500-05030-0A	SCREW, PAN, 5X30	1	1	1	-----	BAFH, QAFH, QKF, QKW1, QKW2, QWD, QWF, QZK, SAE1, TAFH, TAF5, TDW1, TKW1, TXF3 VAY, VEPH, VXAH, VYE3, VZE1
	93500-05040-0A	SCREW, PAN, 5X40	1	1	1	-----	VXC, VXC2, VXE3, VZE8
18	93500-05045-0A	SCREW, PAN, 5X45	1	1	1	-----	BAFH, QAFH, QKF, QKW1, QKW2, QWD, QWF, QZK, SAE1, TAFH, TAF5, TDW1, TKW1, TXF3 VAY, VEPH, VXAH, VYE3, VZE1
19	94050-06000	NUT, FLANGE, 6MM	1	1	1		
20	94540-05018	E-RING, 5MM	1	1	1	-----	BAFH, QAFH, QKF, QKW1, QKW2, QWD, QWF, QZK, SAE1, TAFH, TDW1, TKW1, VEPH, VXAH VZE1
			1	-	-	-----	VAY
21	95701-06010-00	BOLT, FLANGE, 6X10	1	-	-		
			-	1	1	-----	BAFH, TAFH, TAF5, TDW1, TKW1, TXF3, VAY, VXC, VXC2, VYE3
22	95701-06014-00	BOLT, FLANGE, 6X14	2	2	2		
23	16500-Z6L-810	CONTROL ASSY.	1	1	1	-----	QKF, QKW2, QWD, QWF, SAE1, TDW1
24	16500-Z6L-830	CONTROL ASSY.	1	1	1	-----	BAFH, QAFH, QKW1, QZK, TAFH, TKW1, VEPH, VXAH, VZE1
			1	-	-	-----	VAY



Ref. No.	Part No.	Description	Reqd. QTY			Serial No.	Parts catalogue code
			GX 630	GX 660	GX 690		
25	16594-883-010	HOLDER, WIRE	2	2	2	-----	QKF,QKW2,QWD,QWF,SAE1,TDW1,VZE8
26	16550-Z6L-800	ARM COMP., GOVERNOR	-	1	-	-----	VXEH
	16550-Z6L-801	-	-	1	1000154	VXEH
27	16592-Z6L-800	SPRING, RETURN	-	1	1	-----	VXEH
28	16617-Z6L-000	HOLDER, CABLE	1	1	1	-----	BAFH,QAFH,QKF,QKW1,QKW2,QWD,QWF,QZK,SAE1,TAFH,TDW1,TKW1,VEPH,VXAH
						-----	VZE1
29	92301-04006-0H	BOLT, RECESSED, 4X6	1	-	-	-----	VAY
			1	1	1	-----	BAFH,QAFH,QKW1,QZK,TAFH,TKW1,VEPH,VXAH,VZE1
			1	-	-	-----	VAY
			2	-	-	-----	VZE8
			3	3	3	-----	QKF,QKW2,QWD,QWF,SAE1,TDW1
30	94540-05018	E-RING, 5MM	1	1	1	-----	BAFH,QAFH,QKW1,QZK,TAFH,TKW1,VEPH,VXAH,VZE1
			1	-	-	-----	VAY
			2	-	-	-----	VZE8
			3	3	3	-----	QKF,QKW2,QWD,QWF,SAE1,TDW1
31	96001-06010-00	BOLT, FLANGE, 6X10	-	1	1	-----	VXEH
32	16500-Z6L-820	CONTROL ASSY.	1	-	-	-----	VZE8
33	16576-891-000	HOLDER, CABLE	2	2	2	-----	BAFH,QAFH,QKF,QKW1,QKW2,QWD,QWF,QZK,SAE1,TAFH,TAF5,TDW1,TKW1,TFX3
						-----	VAY,VEPH,VXAH,VYE3,VZE1
34	92301-05016-0A	BOLT, RECESSED, 5X16	2	2	2	-----	BAFH,QAFH,QKF,QKW1,QKW2,QWD,QWF,QZK,SAE1,TAFH,TAF5,TDW1,TKW1,TFX3
						-----	VAY,VEPH,VXAH,VYE3,VZE1

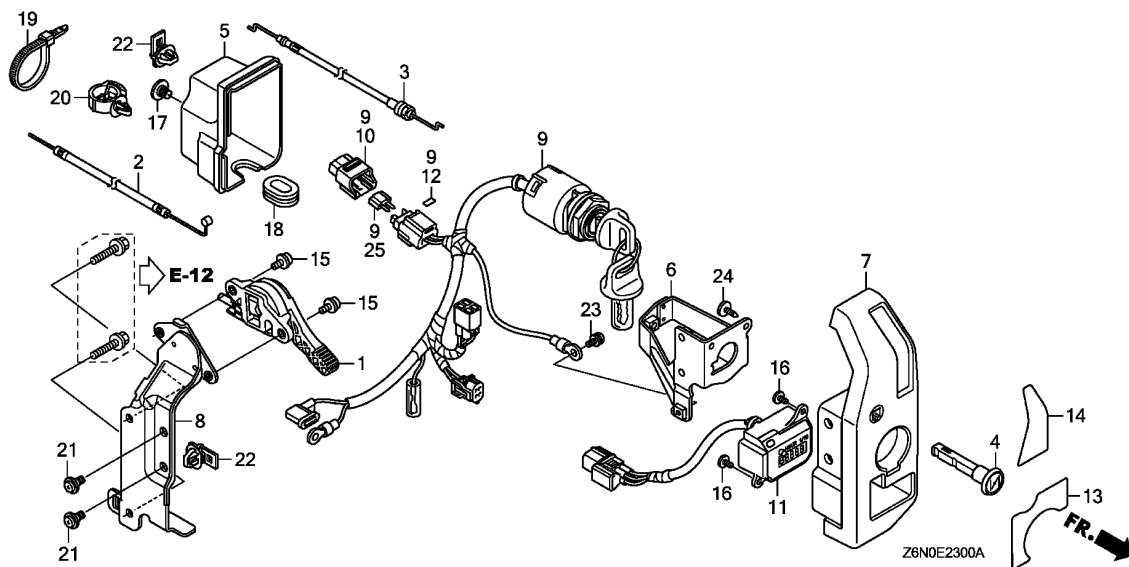
FR.



Z6N0E2220

Ref. No.	L.O.N.	(Relative ref. Number)	Description	F.R.T.
----------	--------	------------------------	-------------	--------

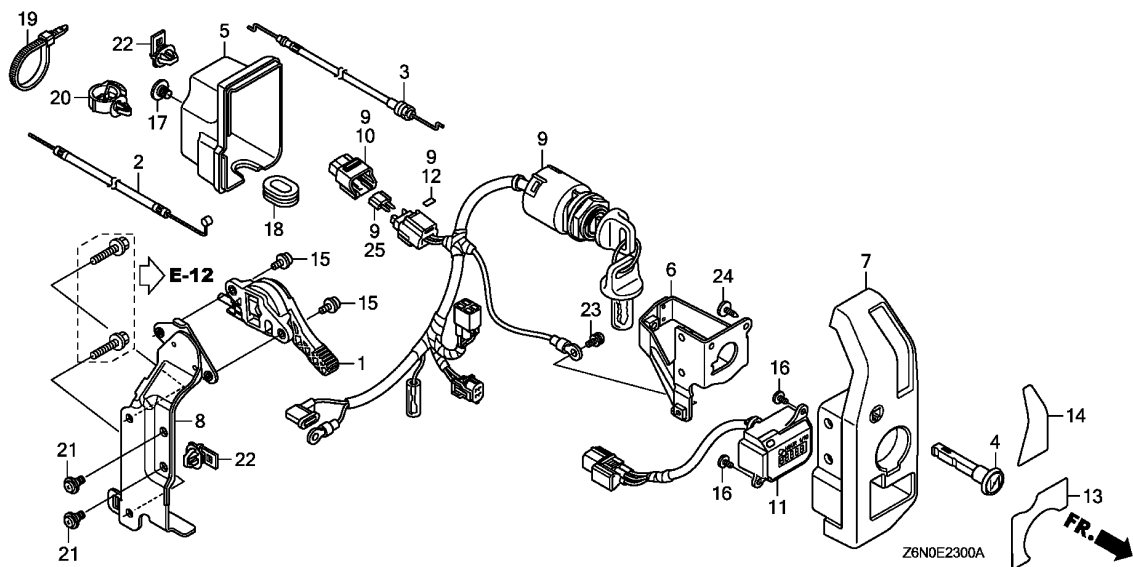
Ref. No.	Part No.	Description	Reqd. QTY			Serial No.	Parts catalogue code
			GX 630	GX 660	GX 690		
1	36335-Z6L-000	STAY, SOLENOID	-	1	1	-----	VXEH
2	36337-Z6L-000	PLATE, SOLENOID	-	1	1	-----	VXEH
3	36350-Z6L-003	SOLENOID ASSY., ROTARY	-	1	1	-----	VXEH
4	90202-ZJ1-840	NUT, SPECIAL CAP	-	2	2	-----	VXEH
5	95701-06014-00	BOLT, FLANGE, 6X14	-	3	3	-----	VXEH



Ref. No.	L.O.N.	(Relative ref. Number) Description	F.R.T.
----------	--------	------------------------------------	--------

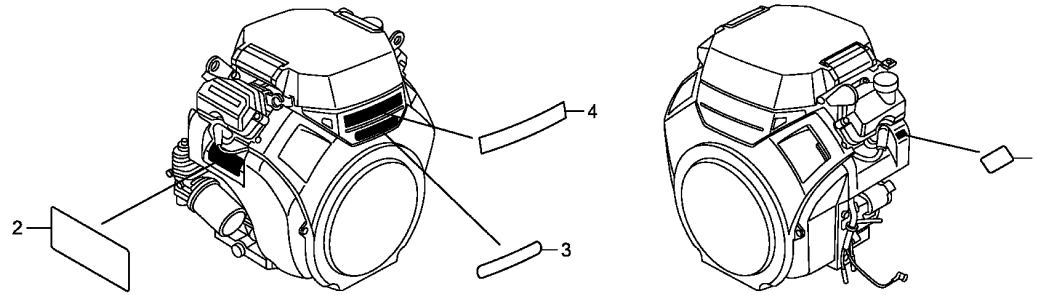
Ref. No.	Part No.	Description	Reqd. QTY			Serial No.	Parts catalogue code
			GX 630	GX 660	GX 690		
1	17850-Z6L-003	LEVER ASSY., THROTTLE	1	1	1	-----	BAFH,QAFH,QKW1,QZK,TAFH,TKW1,VAY,VEPH,VXAH,VZE1
2	17910-Z6L-000	CABLE COMP., THROTTLE	1	1	1	-----	BAFH,QAFH,QKW1,QZK,TAFH,TKW1,VAY,VEPH,VXAH,VZE1
3	17950-Z6L-000	CABLE COMP., CHOKE	1	1	1	-----	BAFH,QAFH,QKW1,QZK,TAFH,TKW1,TFX3,VAY,VEPH,VXAH,VXE1
4	17951-ZV1-000	KNOB, CHOKE	1	1	1	-----	BAFH,QAFH,QKW1,QZK,TAFH,TKW1,TFX3,VAY,VEPH,VXAH,VXE1
5	31612-Z6L-000	COVER, CONTROL	1	1	1	-----	BAFH,QAFH,QKW1,QZK,TAFH,TKW1,TFX3,VAY,VEPH,VXAH,VXE1
6	31614-Z6L-000	BRACKET, SWITCH BOX	1	1	1	-----	BAFH,QAFH,QKW1,QZK,TAFH,TKW1,TFX3,VAY,VEPH,VXAH,VXE1
7	32346-Z6L-000	PANEL, CONTROL	1	1	1	-----	BAFH,QAFH,QKW1,QZK,TAFH,TKW1,VAY,VEPH,VXAH,VZE1
	32346-Z6L-800	-	1	1	-----	TFX3,VXE1
8	32347-Z6L-000	BRACKET, CONTROL BOX	1	1	1	-----	BAFH,QAFH,QKW1,QZK,TAFH,TKW1,TFX3,VAY,VEPH,VXAH,VXE1
9	35100-Z6L-003	SWITCH ASSY., COMBINATION	1	1	1	-----	BAFH,QAFH,QKW1,QZK,TAFH,TKW1,TFX3,VAY,VEPH,VXAH,VXE1
10	38216-Z2E-003	COVER ASSY., FUSE	1	1	1	-----	BAFH,QAFH,QKW1,QZK,TAFH,TKW1,TFX3,VAY,VEPH,VXAH,VXE1
11	39700-Z6L-003	METER ASSY., HOUR	1	1	1	-----	BAFH,QAFH,QKW1,QZK,TAFH,TKW1,TFX3,VAY,VEPH,VXAH,VXE1
12	87117-Z2E-800	LABEL, FUSE (30A)	1	1	1	-----	BAFH,QAFH,QKW1,QZK,TAFH,TKW1,TFX3,VAY,VEPH,VXAH,VXE1
13	87501-Z6L-000	MARK, ENGINE SWITCH	1	1	1	-----	QZK,VEPH,VXAH,VXE1
	87501-Z6L-800	1	1	1	-----	BAFH,QAFH,QKW1,TAFH,TKW1,TFX3,VAY
14	87502-Z6L-000	MARK, THROTTLE SWITCH	1	1	1	-----	BAFH,QAFH,QKW1,QZK,TAFH,TKW1,VAY,VEPH,VXAH,VZE1
	87502-Z6L-800	-	1	1	-----	TFX3,VXE1
15	90011-Z0H-811	BOLT, SOCKET, 5X9	2	2	2	-----	BAFH,QAFH,QKW1,QZK,TAFH,TKW1,VAY,VEPH,VXAH,VZE1
16	90101-SP1-003	SCREW, TAPPING, 3X8(P0)	2	2	2	-----	BAFH,QAFH,QKW1,QZK,TAFH,TKW1,TFX3,VAY,VEPH,VXAH,VXE1
17	90380-MB2-000	SCREW, SPECIAL, 6X8	1	1	1	-----	BAFH,QAFH,QKW1,QZK,TAFH,TKW1,TFX3,VAY,VEPH,VXAH,VXE1
18	90601-Z6L-000	GROMMET, CONTROL BOX	1	1	1	-----	BAFH,QAFH,QKW1,QZK,TAFH,TKW1,TFX3,VAY,VEPH,VXAH,VXE1
19	90650-KV6-003	BAND, WIRE, 95MM	1	1	1	-----	BAFH,QAFH,QKW1,QZK,TAFH,TKW1,TFX3,VAY,VEPH,VXAH,VXE1
20	90681-763-A01	CLIP, WIRE HARNESS	1	1	1	-----	BAFH,QAFH,QKW1,QZK,TAFH,TKW1,TFX3,VAY,VEPH,VXAH,VXE1
21	91508-GN2-000	SCREW, PAN, 5X10.5	2	2	2	-----	BAFH,QAFH,QKW1,QZK,TAFH,TKW1,TFX3,VAY,VEPH,VXAH,VXE1
22	91565-SEL-003	CLIP, COUPLER (BLACK)	2	2	2	-----	BAFH,QAFH,QKW1,QZK,TAFH,TKW1,TFX3,VAY,VEPH,VXAH,VXE1





2

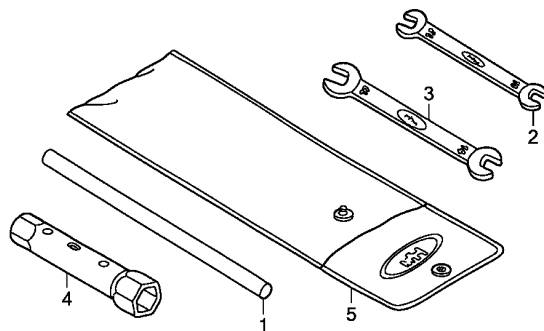
Ref. No.	Part No.	Description	Reqd. QTY			Serial No.	Parts catalogue code
			GX 630	GX 660	GX 690		
23	93893-05008-07	SCREW-WASHER, 5X8	1	1	1	-----	BAFH,QAFH,QKW1,QZK,TAFH,TKW1,TXF3,VAY,VEPH,VXAH,VXEH,VZE1
24	93913-25310	SCREW, TAPPING, 5X14(P0)	1	1	1	-----	BAFH,QAFH,QKW1,QZK,TAFH,TKW1,TXF3,VAY,VEPH,VXAH,VXEH,VZE1
25	98200-43000	FUSE, MINI (30A)	1	1	1	-----	BAFH,QAFH,QKW1,QZK,TAFH,TKW1,TXF3,VAY,VEPH,VXAH,VXEH,VZE1



Z6N0E2800A

Ref. No.	L.O.N. (Relative ref. Number)	Description	F.R.T.
----------	-------------------------------	-------------	--------

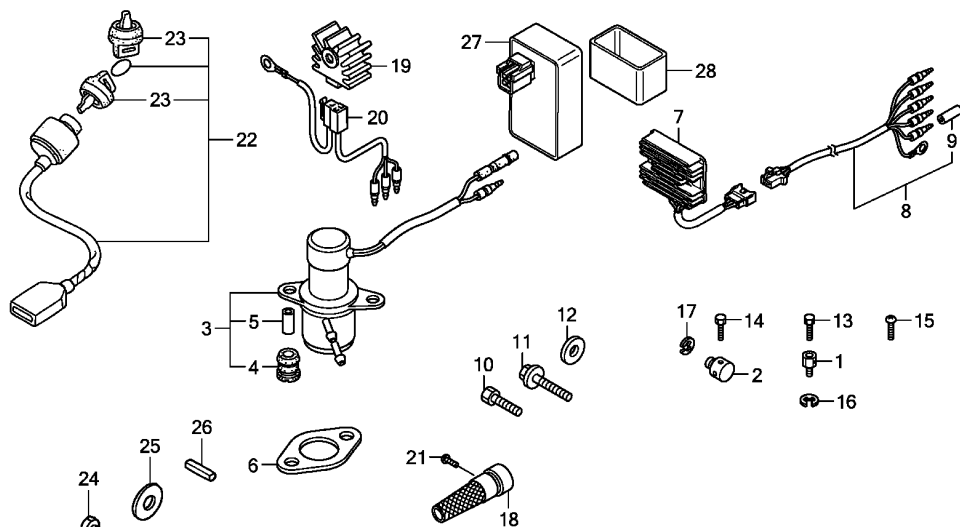
Ref. No.	Part No.	Description	Reqd. QTY			Serial No.	Parts catalogue code
			GX 630	GX 660	GX 690		
1	87114-ZH7-000	LABEL, WARNING (NOT CERTIFIED FOR SALE)	1	-	1	-----	BAFH,QAFH,QKF,QKW1,QKW2,QWD,QWF,QZK,SAE1,TAFH,TAF5,TDW1,TKW1,TFX3 VAY,VEPH,VXAH,VXEH,VYE3,VZE1,VZE8
	87114-ZH7-821	-	1	-	-----	VXC,VXC2
2	87516-ZH7-010	MARK, OPERATOR CAUTION (ENGLISH)(MADE IN JAPAN)	1	-	1	-----	VXC,VXC2,VZE1,VZE8
	87516-ZK6-000	MARK, OPERATOR CAUTION (CHINESE)(MADE IN JAPAN)	1	1	1	-----	BAFH,QAFH,TAFH,VAY,VEPH,VXAH,VXEH
	87516-Z2E-000	MARK, OPERATOR CAUTION	1	1	1	-----	QWD,QWF,SAE1,TAF5,TFX3
	87516-Z6L-800	1	1	1	-----	QKF,QKW1,QKW2,QZK,TDW1,TKW1
3	87521-Z6N-000	EMBLEM (GX630)	1	-	-	-----	
	87521-Z8N-000	EMBLEM (GX660)	-	1	-	-----	
	87521-Z6L-000	EMBLEM (GX690)	-	-	1	-----	
4	87531-Z6L-000	MARK, HONDA	1	1	1	-----	



Z6N0E2900

Ref. No.	L.O.N.	(Relative ref. Number)	Description	F.R.T.
----------	--------	------------------------	-------------	--------

Ref. No.	Part No.	Description	Reqd. QTY			Serial No.	Parts catalogue code
			GX 630	GX 660	GX 690		
1	89219-805-000	HANDLE, BOX WRENCH	1	-	1	-----	VYE3
2	99001-10120	SPANNER, 10X12	1	-	1	-----	VYE3
3	99001-14170	SPANNER, 14X17	1	-	1	-----	VYE3
4	99004-16170	WRENCH, BOX (P16X17)	1	1	1	-----	QKW1,QWD,SAE1,TAF5,TKW1,TXF3,VEPH,VYE3
5	99008-02300	BAG, TOOL, 230MM	1	-	1	-----	VYE3

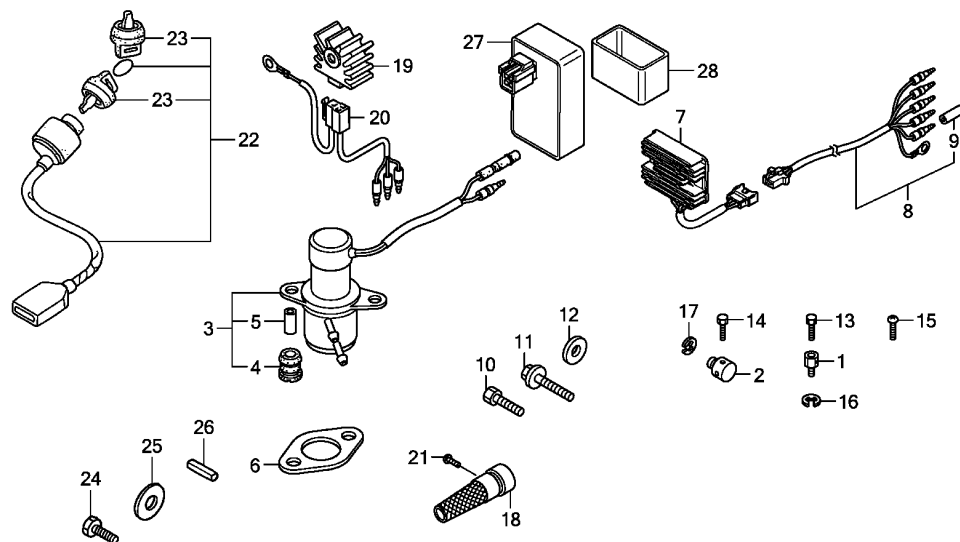


Z6N0E4000B

Ref. No.	L.O.N.	(Relative ref. Number)	Description	F.R.T.
----------	--------	------------------------	-------------	--------

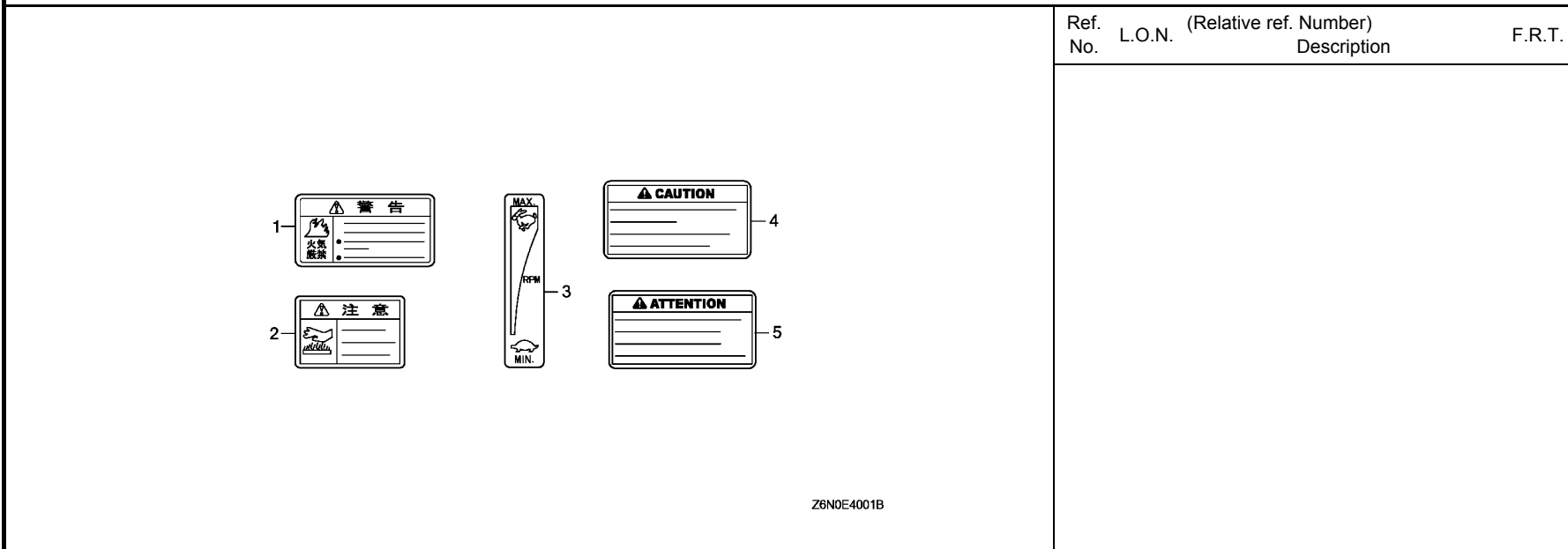
Ref. No.	Part No.	Description	Reqd. QTY			Serial No.	Parts catalogue code
			GX 630	GX 660	GX 690		
1	16594-883-010	HOLDER, WIRE	-	1	1	-----	TAF5,TXF3
2	16617-26L-000	HOLDER, CABLE	-	1	1	-----	TAF5,TXF3
3	16700-758-003	PUMP ASSY., FUEL	-	1	1	-----	TAF5
4	16711-679-000	RUBBER, FUEL PUMP MOUNTING ..	-	2	2	-----	TAF5
5	16712-657-300	COLLAR, FUEL PUMP DISTANCE ..	-	2	2	-----	TAF5
6	18333-ZE3-800	GASKET, EX. PIPE	2	-	2	-----	BAFH,QAFH,QKF,QKW1,QKW2,QWD,QWF,QZK,SAE1,TAFH,TAF5,TDW1,TKW1,TXF3 VAY,VEPH,VXAH,VXEH,VYE3,VZE1,VZE8
	18333-ZE3-801	-	2	-	-----	VXC,VXC2
7	31750-Z2E-803	RECTIFIER ASSY., REGULATOR (20A)	1	1	1	-----	BAFH,QAFH,QKF,QKW2,QWD,QWF,TAFH,TAF5,TDW1 VAY
8	32105-Z6L-000	HARNESS ASSY., SUB WIRE	1	1	1	-----	BAFH,QAFH,QKF,QKW2,QWF,TAFH,TAF5,TDW1 1000098 QWD VAY
9	32824-ZV5-003	PLUG, OUTER CONNECTOR	1	1	1	-----	BAFH,QAFH,QKF,QKW2,QWF,TAFH,TAF5,TDW1 1000098 QWD VAY
10	90003-ZE3-600	BOLT, HEX., 3/8-24UNF(25MM) ..	1	-	-	-----	QWF
11	90102-VA4-000	BOLT, ENGINE SETTING	3	-	-	-----	QWF
12	90471-ZE3-000	WASHER, 10.5X40X4	1	-	-	-----	QWF
13	92301-04006-0H	BOLT, RECESSED, 4X6	-	1	1	-----	TAF5,TXF3
14	92301-04006-0H	BOLT, RECESSED, 4X6	-	1	1	-----	TAF5,TXF3
15	93500-04008-0A	SCREW, PAN, 4X8	-	1	-	-----	TAF5
16	94540-05018	E-RING, 5MM	-	1	1	-----	TAF5,TXF3
17	94540-05018	E-RING, 5MM	-	1	1	-----	TAF5,TXF3





Z6N0E4000B

Ref. No.	Part No.	Description	Reqd. QTY			Serial No.	Parts catalogue code	
			GX 630	GX 660	GX 690			
18	18355-ZJ1-000	ARRESTER, SPARK	1	-	1	-----	VYE3	
19	31750-735-013	RECTIFIER COMP., REGULATOR (5A)	1	-	1	-----	VXC,VXC2,VYE3	
20	32183-Z6L-000	HARNESS ASSY., REGULATOR RECTIFIER	1	-	1	-----	VXC,VXC2,VYE3	
21	93901-250J0	SCREW, TAPPING, 5X8	1	-	1	-----	VYE3	
22	35100-768-S01	SWITCH ASSY., COMBINATION ...	1	-	-	1000099	-----	QWD
23	35110-736-612	KEY ASSY., COMBINATION SWITCH (BLACK)	2	-	-	1000099	-----	QWD
24	90003-ZE3-600	BOLT, HEX., 3/8-24UNF (25MM) .	1	-	-	1000099	-----	QWD
25	90534-706-010	WASHER, LOCK, 8MM	1	-	-	1000099	-----	QWD
26	90745-ZE2-600	KEY, 6.3X6.3X43	1	-	-	1000099	-----	QWD
27	34341-Z6L-003	CONTROL UNIT, VALVE	1	-	1	-----	VXC,VXC2	
28	34343-Z6L-003	CUSHION, VALVE CONTROL UNIT .	1	-	1	-----	VXC,VXC2	



Z6N0E4001B

Ref. No.	Part No.	Description	Reqd. QTY			Serial No.	Parts catalogue code
			GX 630	GX 660	GX 690		

1	87106-737-J00	MARK, FUEL WARNING	1	-	-	-----	QWF
2	87539-737-J00	MARK, HEAT CAUTION	1	1	1	-----	QWF,SAE1,TAF5,TF3
3	87532-ZH7-800	MARK, THROTTLE INDICATION ...	-	-	1	-----	1000098 QWD
4	87539-Z0J-000	MARK, EX. CAUTION (ENGLISH) -	(1)	-	(1)	-----	TDW1
5	87539-Z0J-810	MARK, EX. CAUTION (FRENCH) -	(1)	-	(1)	-----	VXC,VXC2



PART NO. INDEX

F 1

Part Number	Address	Page	Ref.	Part Number	Address	Page	Ref.	Part Number	Address	Page	Ref.	Part Number	Address	Page	Ref.	
06000				14751-Z6L-000	C10	22	11					19511-Z6L-000	D11	39	1	
				14763-Z6L-000	C10	22	12					19513-Z6L-000	D11	39	2	
				14764-Z6L-000	C10	22	13					19610-Z6L-000ZA	C11	23	2	
06183-Z6L-010	D3	31	1	14771-ZE1-000	C10	22	14					19610-Z6L-000ZB	C11	23	2	
06183-Z6L-801	D5	33	1	15000				16221-Z6L-000	C13	25	18	17101-Z6L-000	C1	13	10	
06183-Z6L-811	D7	35	13	15133-Z6L-000	C5	17	2	16263-Z0G-010	D15	43	1	17101-Z6M-000	C2	14	19	
06184-Z6L-810	D8	36	14	15140-Z6L-000	C5	17	3	16347-ZN1-820	C15	27	8	17151-Z6L-000	C1	13	11	
06185-Z6L-000	D3	31	2	15140-Z6L-010	C5	17	3	16500-Z6L-000	D15	43	2	17210-Z6L-010	C16	28	1	
				15220-Z6L-000	C5	17	4	16500-Z6L-010	D15	43	2	17210-Z6L-900	D2	30	3	
				15232-Z6L-000	C5	17	5	16500-Z6L-800	D15	43	2	17214-Z6L-900	D2	30	4	
11000				15400-RTA-004	C5	17	6	16500-Z6L-801	D15	43	2	17218-Z6M-000	D2	30	5	
11100-Z6L-000	C3	15	1	15410-Z6L-000	C5	17	7	16500-Z6L-810	D16	44	23	17219-ZJ1-840	D2	30	6	
11100-Z6L-800	C3	15	1	15410-Z6L-800	C5	17	7	16500-Z6L-820	E1	45	32	17220-Z6L-000	C16	28	2	
11100-Z6L-810	C3	15	1	15410-Z6L-800	C5	17	8	16500-Z6L-830	D16	44	24	17220-Z6L-900	D2	30	7	
11100-Z6L-820	C3	15	1	15410-Z6L-820	C5	17	8	16510-Z6L-000	C5	17	13	17223-Z6L-000	C16	28	3	
11300-Z6L-000	C5	17	1	15423-Z6L-000	C5	17	9	16510-Z6L-010	C6	18	13	17228-Z6L-000	C13	25	19	
11300-Z6L-010	C5	17	1	15424-Z6L-000	C3	15	4	16511-Z6L-300	C6	18	14	C15	27	10		
11911-Z6L-000	C1	13	1					16511-Z6L-310	C6	18	14	17229-Z6L-000	C13	25	20	
								16512-Z6L-300	C6	18	15	17230-Z6L-000	C16	28	4	
12000				15571-ZM7-003	C3	15	5	16512-Z6L-310	C6	18	15	17230-Z6M-000	D2	30	8	
				15572-Z6L-000	C3	15	6	16513-Z6L-000	C6	18	16	17232-Z2E-000	C16	28	5	
12110-Z6L-000	C1	13	2	15600-Z6L-000	C1	13	7	16531-Z6L-000	C6	18	17	17235-Z6L-300	C16	28	6	
12110-Z6L-900	C1	13	2	15625-Z6L-000	C1	13	8	16534-Z6L-000	D15	43	3	D2	30	9		
12120-Z6L-000	C1	13	3	15655-Z6L-000	C5	17	11	16541-Z6L-000	C3	15	7	17236-Z6L-300	C16	28	7	
12120-Z6L-900	C1	13	3	15665-Z6L-000	C5	17	12	16541-Z6L-010	C3	15	7	D2	30	10		
12208-Z6L-003	C10	22	1	15721-Z6L-000	C12	24	1	16550-Z6L-000	D15	43	4	17240-ZA0-951	D2	30	11	
12311-Z6L-000	C1	13	4	15721-Z6M-000	D2	30	1	16550-Z6L-010	D15	43	4	17369-KB4-670	C13	25	21	
12311-Z6L-800	C1	13	5	16000				16550-Z6L-800	E1	45	26	D2	30	12		
12312-Z6L-000	C1	13	6	16010-Z6L-003	C12	24	2	16550-Z6L-801	E1	45	26	17410-Z6L-000	C13	25	22	
12356-Z6L-000	C3	15	2	16013-Z6L-003	C12	24	3	16553-Z6L-000	D15	43	5	17417-Z6L-000	C16	28	8	
12367-Z6L-000	C3	15	3	16015-Z6L-003	C12	24	4	16555-Z6L-000	D15	43	6	17526-MCA-000	D9	37	9	
13000				16015-Z6L-901	C15	27	1	16555-Z6M-000	D15	43	6	17850-Z6L-003	E3	47	1	
13010-Z6L-003	C9	21	1	16016-Z6L-003	C12	24	5	16561-Z6L-000	D15	43	7	17910-Z6L-000	E3	47	2	
13101-Z6L-000	C9	21	2	16024-124-760	C12	24	6	16562-Z6L-000	D15	43	8	17950-Z6L-000	E3	47	3	
13111-Z6L-000	C9	21	3	16081-Z6L-003	C14	26	29	16562-Z6M-000	D15	43	8	17951-ZV1-000	E3	47	4	
13210-Z6L-000	C9	21	4	16100-Z6L-003	C12	24	7	16576-891-000	D15	43	9	18000				
13211-Z6L-003	C9	21	5	16100-Z6L-851	C12	24	7	16584-883-300	D15	43	10	18310-Z6L-003	D3	31	3	
13310-Z6L-000	C8	20	1	16100-Z6L-901	C15	27	2	16592-Z6L-800	E1	45	27	18310-Z6L-801	D5	33	3	
13310-Z6L-600	C8	20	2	16100-Z8N-003	C12	24	7	16592-ZJ1-000	D16	44	11	18310-Z6L-810	D7	35	1	
13310-Z6L-610	C8	20	9	16100-Z8N-851	C12	24	7	16594-883-010	E1	45	25	18321-Z6L-801	D7	35	2	
13310-Z6L-620	C8	20	3	16100-Z9E-003	C12	24	7	16611-Z6L-000	D16	44	12	18321-ZJ1-010	D3	31	4	
13310-Z6L-640	C8	20	4	16100-Z9E-901	C15	27	2	16617-Z6L-000	D16	44	13	D5	33	4		
13310-Z6L-650	C8	20	5	16113-Z6L-003	C14	26	30					18325-Z6L-800	D7	35	3	
				16124-ZE0-005	C12	24	8					18325-Z6L-801	D7	35	3	
14000				16126-Z6L-003	C13	25	9	16700-758-003	E7	51	2	18330-Z6L-800	D7	35	4	
14100-Z6L-000	C10	22	2					16700-Z6L-003	D9	37	1	18333-ZE3-800	E7	51	6	
14410-Z6L-000	C10	22	3	16148-141-881	C13	25	10	16711-679-000	E7	51	4	18333-ZE3-801	E7	51	6	
14431-Z6L-000	C10	22	4	16155-Z6L-003	C13	25	11	16711-Z6L-000	D9	37	2	18338-Z6L-800	D7	35	5	
14461-Z6L-000	C10	22	5	16163-Z6L-901	C15	27	5	16712-657-300	E7	51	5	18355-ZJ1-000	D3	31	5	
14568-Z6L-000	C10	22	6	16166-Z6L-003	C13	25	12	16715-Z6L-000	C11	23	1	D5	33	5		
14711-Z6L-000	C10	22	7	16166-Z8N-003	C13	25	12	16722-Z6L-000	C1	13	9	E8	52	18		
14711-Z6L-900	C10	22	7	16176-Z2G-D51	C13	25	13	16850-Z6L-000	D9	37	3	18371-Z6L-000	D7	35	6	
14721-Z6L-000	C10	22	8	16176-Z6L-000	C13	25	14	16860-Z6L-000	D9	37	4	18431-Z6L-000	D8	36	15	
14721-Z6L-900	C10	22	8	16198-Z6L-000	C13	25	14	16860-Z6L-800	D9	37	5	19000				
14730-Z6L-000	C10	22	9	16198-ZJ1-840	C13	25	14	16870-Z6L-000	D9	37	6	19505-KS6-700	C15	27	11	
14735-Z6L-000	C10	22	10	16200-Z6L-003	C13	25	15	16882-Z6L-000	D9	37	7					
				16211-Z6L-000	C13	25	16	16910-Z6L-003	D9	37	8	31750-Z2E-803	E7	51	7	
												31110-Z6L-003	D11	39	7	
												31200-Z6L-003	D14	42	3	
												31203-PH9-004	D14	42	4	
												31204-ZJ1-H02	D14	42	5	
												31207-ZE9-H01	D14	42	6	
												31208-Z6L-003	D14	42	7	
												31211-PH9-004	D14	42	8	
												31212-PH9-004	D14	42	9	
												31214-PH9-004	D14	42	10	
												31217-Z0A-003	D14	42	11	
												31218-P64-N01	D14	42	12	
												31219-Z6L-003	D14	42	13	
												31220-PH9-004	D14	42	14	
												31223-PA0-006	D14	42	15	
												31231-PH9-004	D14	42	16	
												31233-PH9-004	D14	42	17	
												31234-Z6L-000	D14	42	18	
												31612-Z6L-000	E3	47	5	
												31614-Z6L-000	E3	47	6	
												31630-Z6L-003	D12	40	3	
												31630-Z6L-801	D12	40	4	
												31750-735-013	D12	40	5	
												E8	52	19		
												E7	51	7		



PART NO. INDEX

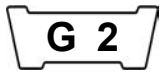
Part Number	Address	Page	Ref.	Part Number	Address	Page	Ref.	Part Number	Address	Page	Ref.	Part Number	Address	Page	Ref.				
32000				84000				90551-ZE1-000 C9 21 7				93500-04012-1H C13 25 24				95701-06028-00 C6 18 29			
32105-Z6L-000 E7 51 8				84601-HA7-670 C11 23 8				90601-Z6L-000 E3 47 18				93500-04014-1H C15 27 13				95701-06030-00 C1 13 15			
32110-Z6L-000 D12 40 6								90602-ZE1-000 C6 18 19				93500-05030-0A D16 44 17							
32110-Z6L-800 D12 40 6				87000				90649-SB0-671 C15 27 12				93500-05040-0A D16 44 17				95701-06032-00 D13 41 17			
32110-Z6L-810 D12 40 7								90650-KV6-003 D12 40 11				93892-05010-18 C14 26 31				95701-06035-00 C6 18 30			
32110-Z6L-840 D12 40 7				87106-737-J00 E9 53 1				90672-SB2-003 D12 40 12				93893-05008-07 E4 48 23				95701-06050-00 C1 13 16			
32110-Z6L-850 D12 40 7				87114-ZH7-000 E5 49 1				90681-763-A01 E3 47 20				93894-06016-00 D9 37 12				95701-06090-00 C7 19 31			
32110-Z6L-900 D13 41 19				87114-ZH7-821 E5 49 1				90705-Z6L-000 C9 21 8				93901-250J0 D3 31 6				95701-06110-00 D2 30 17			
32110-Z6L-910 D13 41 19				87117-Z2E-800 E3 47 12				90707-Z6L-000 C6 18 20				D5 33 6				95701-08016-00 C2 14 17			
32114-Z6L-000 D12 40 8				87501-Z6L-000 E3 47 13				90708-Z6L-000 C6 18 21				E8 52 21				95701-08020-00 D4 32 11			
32114-Z6L-900 D13 41 20				87501-Z6L-800 E3 47 13				90709-Z6L-000 C3 15 12				E4 48 24				D6 34 11			
32115-Z6L-000 D12 40 9				87502-Z6L-000 E3 47 14				90741-ZE2-000 C8 20 7				93913-25310 E4 48 24				D7 35 10			
32183-Z6L-000 D12 40 10				87502-Z6L-800 E3 47 14				90745-ZE2-600 C8 20 8				93913-25580 C11 23 11				95701-08030-00 D7 35 11			
				87516-Z2E-000 E5 49 2				90802-Z6L-000 D1 29 11				94000				95701-08045-00 C7 19 32			
32346-Z6L-000 E3 47 7				87516-Z6L-800 E5 49 2				90802-Z6L-000 D2 30 14				94050-06000 D1 29 12				95701-08050-00 D11 39 11			
32346-Z6L-800 E3 47 7				87516-ZH7-010 E5 49 2				90902-Z6L-000 C6 18 22				94050-08000 D2 30 15				95701-08060-00 D7 35 12			
32347-Z6L-000 E3 47 8				87521-Z6L-000 E5 49 3				91000				94050-08000 D16 44 19				96000			
32824-ZV5-003 E7 51 9				87521-Z6N-000 E5 49 3				91002-ZG4-801 D14 42 19				94050-10000 C1 13 13				96001-06010-00 E1 45 31			
				87521-Z8N-000 E5 49 3				91201-Z6L-003 C3 15 13				D3 31 9				98000			
34000				87531-Z6L-000 E5 49 4				91202-Z6L-003 C6 18 23				D5 33 9							
34341-Z6L-003 E8 52 27				87532-ZH7-800 E9 53 3				91202-Z6L-003 C6 18 23				94070-08080 D14 42 20							
34343-Z6L-003 E8 52 28				87539-737-J00 E9 53 2				91203-Z6L-003 C3 15 14				94251-10000 C4 16 20				98079-5547G C2 14 18			
				87539-Z0J-000 E9 53 4				91301-Z6L-003 C6 18 24				94540-05018 D16 44 20				98079-5587G C2 14 18			
35000				87539-Z0J-810 E9 53 5				91302-Z6L-003 C6 18 25								98200-43000 E4 48 25			
35100-768-S01 E8 52 22				89000				91308-PH9-000 C6 18 26				E1 45 30							
35100-Z6L-003 E3 47 9								91308-Z6L-003 C3 15 15				E7 51 16				99000			
35110-736-612 E8 52 23				89219-805-000 E6 50 1				C6 18 27				95000				99001-10120 E6 50 2			
35480-Z6L-003 C3 15 8				90000				C3 15 16				95002-02080 C13 25 25				99001-14170 E6 50 3			
36000				90001-Z6L-000 C9 21 6				91309-Z6L-000 C3 15 16				95002-41000-08 D9 37 13				99004-16170 E6 50 4			
36335-Z6L-000 E2 46 1				90002-ZG5-004 C3 15 10				91508-GN2-000 E3 47 21				95002-41200-08 D10 38 14				99008-02300 E6 50 5			
36337-Z6L-000 E2 46 2				90003-Z6L-000 C13 25 23				91541-S0A-003 D13 41 21				95002-70000 D10 38 15				99101-ZH8-0900 C13 25 26			
36350-Z6L-003 E2 46 3				90003-ZE3-600 E7 51 10				91565-SEL-003 E3 47 22				95701-06008-00 D3 31 10				99101-ZH8-0920 C14 26 27			
				E8 52 24				91601-Z6L-000 D12 40 13				D5 33 10				99101-ZH8-0950 C13 25 26			
37000				90005-Z6L-000 C11 23 9				92000				D7 35 8				99101-ZH8-0980 C14 26 27			
37240-ZG5-004 C3 15 9				90011-Z0H-811 E3 47 15				92301-04006-0H D16 44 15				D13 41 14				99101-ZH8-1000 C13 25 26			
				90012-Z6L-000 C10 22 15				E1 45 29				D16 44 21				99101-ZH8-1020 C14 26 26			
				90015-ZE3-790 D16 44 14				E7 51 13				D7 35 9				99101-ZH8-1050 C14 26 26			
38000				90043-Z6L-000 C2 14 20				92301-05016-0A D16 44 16				D10 38 16				99101-ZH8-1100 C14 26 26			
38216-Z2E-003 E3 47 10				90055-ZE1-000 D8 36 16				E1 45 34				D11 39 10				99101-ZH8-1120 C14 26 26			
				90101-SP1-003 E3 47 16				C3 15 17				D13 41 15				99204-ZE2-0400 C14 26 28			
				90102-VA4-000 E7 51 11				92800-20000 C3 15 17				95701-06014-00 C4 16 22				99204-ZE2-0450 C14 26 28			
39000				90131-S0X-A00 D11 39 8				92900-08022-0E C1 13 12				D10 38 17							
39700-Z6L-003 E3 47 11				90201-Z6L-000 D11 39 9				92900-08045-0B D3 31 7				D13 41 16							
				90202-ZJ1-840 E2 46 4				D5 33 7											
				90206-Z6L-000 C10 22 16				92900-08060-0B D3 31 8				D16 44 22							
55000				90325-044-000 D1 29 10				D5 33 8				95701-06016-00 E2 46 5							
55109-GAA-000 D9 37 10				90380-GM9-740 C11 23 10				92900-10040-0B C4 16 18				C4 16 23							
				90380-MB2-000 E3 47 17				93000				C11 23 12							
				90402-Z6L-000 C8 20 6								D2 30 16							
80000				90403-Z6L-000 C6 18 18								95701-06018-00 D1 29 13							
80152-958-680 D9 37 11				90404-Z6L-000 C3 15 11				93500-03008-0A C4 16 19				95701-06020-00 C6 18 28							
				90471-ZE3-000 E7 51 12				93500-04008-0A E7 51 15				C11 23 13							
				90534-706-010 E8 52 25				93500-04008-4J D7 35 7				95701-06022-00 C10 22 19							

PART NAME INDEX

G 1

Part name	Address	Page	Ref.	Part name	Address	Page	Ref.	Part name	Address	Page	Ref.
[A]				BOLT, FLANGE, 6X8	D7	35	8	CLAMP, OIL HOSE	D9	37	10
ARMATURE COMP.	D14	42	11	D13	41	14	CLAMP, TUBE	D9	37	13
ARM COMP., GOVERNOR	D15	43	4	BOLT, FLANGE, 6X90	C7	19	31	D10	38	14
.....	E1	45	26	BOLT, FLANGE, 8X16	C2	14	17	CLIP, AIR CLEANER	D2	30	6
ARM, SUB	D15	43	5	C15	27	12	CLIP, BREATHER TUBE	C13	25	21
ARM, THROTTLE LINKAGE	C13	25	9	BOLT, FLANGE, 8X20	D4	32	11	D2	30	12
.....	C15	27	4	D6	34	11	CLIP, COUPLER	E3	47	22
ARM, VALVE ROCKER	C10	22	4	BOLT, FLANGE, 8X30	D7	35	10	CLIP, GOVERNOR HOLDER	C6	18	19
ARRESTER KIT	D3	31	2	D7	35	11	C10	22	17
.....	D5	33	2	BOLT, FLANGE, 8X45	C7	19	32	CLIP, HARNESS BAND	D13	41	21
ARRESTER, SPARK	D3	31	5	BOLT, FLANGE, 8X50	D11	39	11	CLIP, PISTON PIN, 18MM	C9	21	7
.....	D5	33	5	BOLT, FLANGE, 8X60	D7	35	12	CLIP, TUBE	C13	25	25
.....	E8	52	18	BOLT, GOVERNOR ARM	D16	44	14	D10	38	15
[B]				BOLT, HEX., 3/8-24UNF	E7	51	10	CLIP, WIRE HARNESS	E3	47	20
BAG, TOOL, 230MM	E6	50	5	E8	52	24	CLUTCH COMP., OVERRUNNING	D14	42	6
BALL, STEEL,	C6	18	22	BOLT, RECESSED, 4X6	D16	44	15	COIL ASSY., CHARGE	D12	40	3
BAND, MUFFLER	D7	35	6	E1	45	29	E7	51	13
BAND, WIRE, 95MM	D12	40	11	E7	51	13	COIL ASSY., IGNITION	D12	40	1
BASE COMP., OIL FILTER	E3	47	19	BOLT, RECESSED, 5X16	D16	44	16	D14	42	2
.....	C5	17	7	E1	45	34	COLLAR, AIR CLEANER	D2	30	11
.....			8	BOLT, SEALING	C3	15	4	C11	23	3
BEARING A	D14	42	19	C5	17	10	C16	28	9
BEARING A, CONNECTING ROD	C9	21	5	BOLT, SOCKET, 5X9	E3	47	15	D2	30	13
BOLT, CONNECTING ROD, 7X38 ...	C9	21	6	BOLT, STUD, 10X40	C4	16	18	D11	39	3
BOLT, DRAIN PLUG, 20MM	C3	15	17	BOLT, STUD, 6X106	C2	14	20	COLLAR, FUEL PUMP DISTANCE	E7	51	5
BOLT, ENGINE SETTING	E7	51	11	BOLT, STUD, 8X22	C1	13	12	COLLAR, VALVE LIFTER	C10	22	12
BOLT, FLANGE, 10X40	D14	42	21	BOLT, STUD, 8X45	D3	31	7	CONTROL ASSY.	D15	43	2
BOLT, FLANGE, 6X10	D16	44	21	D5	33	7	D16	44	23
.....	E1	45	31	BOLT, STUD, 8X60	D3	31	8	E1	45	32
BOLT, FLANGE, 6X106	C13	25	23	D5	33	8	CONTROL UNIT, VALVE	E8	52	27
BOLT, FLANGE, 6X110	D2	30	17	BOLT, THROUGH	D14	42	10	COVER ASSY., CRANKCASE	C5	17	1
BOLT, FLANGE, 6X12	D7	35	9	BRACKET, CONTROL BOX	E3	47	8	COVER ASSY., FUSE	E3	47	10
.....	D10	38	16	BRACKET, HARNESS	D12	40	8	COVER COMP., AIR CLEANER	C16	28	4
.....	D11	39	10	D13	41	20	D2	30	8
.....	D13	41	15	BRACKET, REGULATOR RECTIFIER ..	D12	40	9	COVER COMP., FAN	C11	23	2
BOLT, FLANGE, 6X14	C4	16	22	BRACKET, SWITCH BOX	E3	47	6	COVER, BREATHER	C3	15	2
.....	D10	38	17	BRUSH	D14	42	8	COVER, CONTROL	E3	47	5
.....	D13	41	16	[C]				COVER, CYLINDER HEAD	C1	13	4
.....			22	CABLE COMP., CHOKE	E3	47	3	E1	45	32
.....	D16	44	22	CABLE COMP., THROTTLE	E3	47	2	CONTROL UNIT, VALVE	E8	52	27
.....	E2	46	5	CAMSHAFT ASSY.	C10	22	2	COVER ASSY., CRANKCASE	C5	17	1
BOLT, FLANGE, 6X16	C4	16	23	CAP ASSY., OIL FILLER	C1	13	7	COVER ASSY., FUSE	E3	47	10
.....	C11	23	12	CAP, BOOST	C13	25	17	COVER COMP., AIR CLEANER	C16	28	4
.....	D2	30	16	D2	30	2	D2	30	8
BOLT, FLANGE, 6X18	D1	29	13	CAP, CHOKE DUST	C13	25	10	COVER COMP., FAN	C11	23	2
BOLT, FLANGE, 6X20	C6	18	28	CAP, SEALING	D1	29	11	COVER, BREATHER	C3	15	2
.....	C11	23	13	D2	30	14	COVER, CONTROL	E3	47	5
BOLT, FLANGE, 6X22	C10	22	19	CARBURETOR ASSY.	C12	24	7	COVER, CYLINDER HEAD	C1	13	4
BOLT, FLANGE, 6X28	C6	18	29	C15	27	2	E1	45	32
BOLT, FLANGE, 6X30	C1	13	15	CARTRIDGE, OIL FILTER	C5	17	6	COVER, FUEL PUMP	C11	23	1
.....	D13	41	17	CASE COMP., AIR CLEANER	C16	28	2	COVER, TERMINAL	D14	42	18
BOLT, FLANGE, 6X32	D13	41	18	D2	30	7	CRANKCASE ASSY.	C3	15	1
BOLT, FLANGE, 6X35	C6	18	30	CHAMBER SET, FLOAT	C12	24	4	CRANKSHAFT COMP.	C8	20	1
BOLT, FLANGE, 6X50	C1	13	16	C15	27	1			
BOLT, FLANGE, 6X8	D3	31	10	CLAMP A, WATER HOSE	C15	27	11	CUSHION, VALVE CONTROL UNIT ...	E8	52	28
.....	D5	33	10	CLAMP, HIGH TENSION CORD	D12	40	2	[D]			

PART NAME INDEX



Part name	Address	Page	Ref.	Part name	Address	Page	Ref.	Part name	Address	Page	Ref.
DOWEL PIN, 9X10	C9	21	8	HOLDER, SCREEN GRID	D11	39	6	MUFFLER KIT	D5	33	1
[E]				HOLDER, WIRE	E1	45	25		D7	35	13
ELBOW COMP., AIR CLEANER	C13	25	22		E7	51	1	[N]			
ELEMENT COMP., AIR CLEANER ...	C16	28	1	HOSE, FUEL	C15	27	8	NOZZLE, MAIN	C13	25	12
	D2	30	3	HOUSING COMP., DRIVE SIDE	D14	42	7	NUT-WASHER, 8MM	D14	42	20
EMBLEM	E5	49	3					NUT, FENDER SETTING	C11	23	8
E-RING, 5MM	D16	44	20	[I]				NUT, FLANGE, 10MM	C1	13	14
	E1	45	30	INSULATOR, BRUSH HOLDER	D14	42	17	NUT, FLANGE, 6MM	D1	29	12
	E7	51	16	INSULATOR, CARBURETOR	C13	25	16		D2	30	15
			17		C15	27	6		D16	44	19
[F]								NUT, FLANGE, 8MM	C1	13	13
FAN, COOLING	D11	39	1	[J]					D3	31	9
FILTER, BREATHER	C3	15	3	JET SET, PILOT,	C14	26	28		D5	33	9
FILTER, OUTER	D2	30	5	JET, MAIN,	C13	25	26	NUT, HEX.	D14	42	15
FLOAT SET	C12	24	3		C14	26	26	NUT, HEX., 8MM	D14	42	14
FLYWHEEL COMP.	D11	39	7					NUT, SPECIAL	D11	39	9
FRAME COMP., COMMUTATOR END ..	D14	42	13	JOINT COMP., FUEL	C15	27	9	NUT, SPECIAL CAP	E2	46	4
FUSE, MINI	E4	48	25	JOINT, FUEL RETURN	D9	37	9	NUT, TAPPET ADJUSTING	C10	22	16
				JOINT, ROD	D15	43	1	NUT, TOOL BOX SETTING	D1	29	10
[G]								[O]			
GASKET SET	C12	24	2	KEY ASSY., COMBINATION SWITCH ..	E8	52	23	OIL SEAL, 10X16X5	C3	15	14
GASKET, EX. PIPE	E7	51	6	KEY, 6.3X6.3X43	C8	20	8	OIL SEAL, 38X58X9	C3	15	13
GASKET, FLOAT CHAMBER	C15	27	5		E8	52	26		C6	18	23
GAUGE COMP., OIL LEVEL	C5	17	11	KEY, SPECIAL WOODRUFF, 25X18 ..	C8	20	7	O-RING, 14.8X2.4	C6	18	24
GEAR COMP., OIL PUMP	C5	17	3	KNOB, AIR CLEANER COVER	C16	28	6	O-RING, 37.9X2.4	C3	15	16
GOVERNOR ASSY.	C5	17	13		D2	30	9	O-RING, 8.8X1.9	C6	18	26
	C6	18	13	KNOB, CHOKE	E3	47	4	O-RING, OIL PUMP	C6	18	25
GRID, SCREEN	D11	39	5					[P]			
GROMMET, AIR CLEANER	C16	28	5	[L]				PACKING, AIR CLEANER	C13	25	19
GROMMET, CONTROL BOX	E3	47	18	LABEL, FUSE	E3	47	12		C15	27	10
GROMMET, CORD	D12	40	13	LABEL, WARNING	E5	49	1	PACKING, AIR CLEANER CASE	C16	28	8
				LEVER ASSY., THROTTLE	E3	47	1	PACKING, CARBURETOR	C13	25	18
[H]				LEVER, PINION DRIVE	D14	42	4		C15	27	7
HANDLE, BOX WRENCH	E6	50	1	LIFTER ASSY., VALVE	C10	22	9	PACKING, HEAD COVER	C1	13	6
HANGER, ENGINE	C1	13	1					PACKING, INTAKE MANIFOLD	C1	13	11
HARNES ASSY., ENGINE WIRE ...	D12	40	6	[M]				PACKING, OIL FILLER CAP	C1	13	8
				MANIFOLD, INTAKE	C1	13	10	PACKING, OIL PASS	C3	15	15
	D13	41	19		C2	14	19		C6	18	27
HARNES ASSY., REGULATOR				MARK, ENGINE SWITCH	E3	47	13	PANEL, CONTROL	E3	47	7
RECTIFIER	D12	40	10	MARK, EX. CAUTION	E9	53	4	PIN, GOVERNOR WEIGHT	C6	18	16
	E8	52	20					PIN, LOCK, 10MM	C4	16	21
HARNES ASSY., SUB WIRE	E7	51	8	MARK, FUEL WARNING	E9	53	1	PIN, PISTON	C9	21	3
HEAD COMP., CYLINDER	C1	13	2	MARK, HEAT CAUTION	E9	53	2	PIPE COMP., EX.	D7	35	4
				MARK, HONDA	E5	49	4	PIPE COMP., OIL LEVEL	C5	17	12
				MARK, OPERATOR CAUTION	E5	49	2	PISTON	C9	21	2
HOLDER, BRUSH	D14	42	16	MARK, THROTTLE INDICATION	E9	53	3	PLATE	C14	26	30
HOLDER, CABLE	D15	43	9	MARK, THROTTLE SWITCH	E3	47	14	PLATE, COOLING FAN SETTING	D11	39	2
	D16	44	13	METER ASSY., HOUR	E3	47	11	PLATE, SOLENOID	E2	46	2
	E1	45	28	MOTOR ASSY., STARTER	D14	42	3	PLATE, STOPPER	C3	15	6
			33	MUFFLER COMP.	D3	31	3	PLUG, OUTER CONNECTOR	E7	51	9
	E7	51	2		D5	33	3	PLUG, SPARK	C2	14	18
HOLDER, ELEMENT	D2	30	4		D7	35	1	PROTECTOR, FAN COVER	C11	23	4
HOLDER, GOVERNOR WEIGHT	C6	18	15	MUFFLER KIT	D3	31	1	PROTECTOR, MUFFLER	D3	31	4
HOLDER, OIL FILTER	C5	17	9								



PART NAME INDEX

G 3

Part name	Address	Page	Ref.	Part name	Address	Page	Ref.	Part name	Address	Page	Ref.
PROTECTOR, MUFFLER	D5	33	4	SHAFT, FR. P.T.O.	D11	39	4	[W]			
	D7	35	2	SHAFT, GOVERNOR ARM	C3	15	7	WASHER, 10.5X40X4	E7	51	12
			3	SHAFT, ROCKER ARM	C10	22	5	WASHER, 6X16	C6	18	18
PUMP ASSY., FUEL	D9	37	1	SHROUD, L. LOWER	C11	23	7	WASHER, CRANKSHAFT THRUST	C8	20	6
	E7	51	3	SHROUD, R. LOWER	C11	23	6	WASHER, DRAIN PLUG, 20MM	C4	16	20
				SHROUD, UPPER	C11	23	5	WASHER, LOCK, 8MM	E8	52	25
[R]				SLIDER, GOVERNOR	C6	18	17	WASHER, PLAIN	C3	15	11
RECTIFIER ASSY., REGULATOR ...	E7	51	7	SOLENOID ASSY., ROTARY	E2	46	3	WEIGHT, GOVERNOR	C6	18	14
RECTIFIER COMP., REGULATOR ...	D12	40	5	SPANNER, 10X12	E6	50	2	WRENCH, BOX	E6	50	4
	E8	52	19	SPANNER, 14X17	E6	50	3				
RETAINER, IN. VALVE SPRING ...	C10	22	14	SPRING, AIR CLEANER CASE COVER	C16	28	7	[Y]			
RING SET, PISTON	C9	21	1		D2	30	10	YOKE COMP.	D14	42	12
RING, SNAP	D14	42	1	SPRING, BRUSH	D14	42	9				
ROD ASSY., CONNECTING	C9	21	4	SPRING, CABLE RETURN	D16	44	11				
ROD COMP., PUSH	C10	22	3	SPRING, CONTROL ADJUSTING	D15	43	10				
ROD, CHOKE CONTROL	D16	44	12	SPRING, GOVERNOR	D15	43	7				
ROD, GOVERNOR	D15	43	6	SPRING, RELIEF VALVE	C5	17	5				
ROTOR, OIL PUMP OUTER	C5	17	2	SPRING, RETURN	E1	45	27				
RUBBER, FUEL PUMP MOUNTING ...	E7	51	4	SPRING, STARTER	D15	43	3				
RUBBER, RR. FENDER	D9	37	11	SPRING, THROTTLE RETURN	D15	43	8				
				SPRING, VALVE	C10	22	11				
[S]				SPRING, VALVE LIFTER	C10	22	13				
SCREEN, FUEL STRAINER	C13	25	13	SPRING, WEIGHT RETURN	C10	22	6				
SCREW-WASHER, 4X8	C3	15	10	STAY COMP., AIR CLEANER							
	C7	19	34	STAY COMP., AIR CLEANER	ELEMENT	C16	28				
SCREW-WASHER, 5X10	C14	26	31	STAY, FUEL PUMP	D9	37	2				
SCREW-WASHER, 5X8	E4	48	23	STAY, FUEL TUBE GROMMET	C1	13	9				
SCREW-WASHER, 6X16	D9	37	12	STAY, MUFFLER	D7	35	5				
SCREW SET	C12	24	5	STAY, SOLENOID	E2	46	1				
SCREW SET, DRAIN	C12	24	6	STRAINER COMP., FUEL	D9	37	8				
SCREW, FLOAT	C14	26	29	STRAINER COMP., OIL	C5	17	4				
SCREW, PAN, 3X8	C4	16	19	STRAP, CABLE, 105MM	D12	40	12				
SCREW, PAN, 4X12	C13	25	24	SWITCH ASSY., COMBINATION	E3	47	9				
SCREW, PAN, 4X14	C15	27	13		E8	52	22				
SCREW, PAN, 4X8	D7	35	7	SWITCH ASSY., MAGNET	D14	42	5				
	E7	51	15	SWITCH ASSY., OIL LEVEL	C3	15	8				
SCREW, PAN, 5X10.5	E3	47	21	SWITCH, OIL PRESSURE	C3	15	9				
SCREW, PAN, 5X30	D16	44	17		C7	19	33				
SCREW, PAN, 5X40	D16	44	17	[T]							
SCREW, PAN, 5X45	D16	44	18	TUBE COMP. A, FUEL	D9	37	3				
SCREW, SPECIAL, 4X10	C11	23	9	TUBE COMP. B, FUEL	D9	37	4				
SCREW, SPECIAL, 6X15	C11	23	10				5				
SCREW, SPECIAL, 6X8	E3	47	17	TUBE, BREATHER	C12	24	1				
SCREW, TAPPET ADJUSTING	C10	22	15		D2	30	1				
SCREW, TAPPING, 3X8	E3	47	16	TUBE, DIAPHRAGM	D9	37	7				
SCREW, TAPPING, 4X6	D8	36	16	TUBE, DRAIN	C13	25	14				
SCREW, TAPPING, 5X14	E4	48	24	TUBE, PURGE	D9	37	6				
SCREW, TAPPING, 5X20	C11	23	11								
SCREW, TAPPING, 5X8	D3	31	6	[V]							
	D5	33	6	VALVE ASSY., SOLENOID	C13	25	15				
	E8	52	21	VALVE COMP., FLOAT	C13	25	11				
SCREW, THROTTLE STOP	C12	24	8	VALVE, EX.	C10	22	8				
	C15	27	3	VALVE, IN.	C10	22	7				
SCREW, TRUSS, 6X16	D11	39	8	VALVE, OIL OUTLET	C3	15	5				
SEAL, AIR CLEANER CASE	C13	25	20								
SEAL, VALVE STEM	C10	22	1								
SHAFT COMP., VALVE LIFTER	C10	22	10								

1

FOREWORD INDEX

2

ENGINE GROUP

3

PART NUMBER INDEX

4

PART NAME INDEX

HONDA
The Power of Dreams